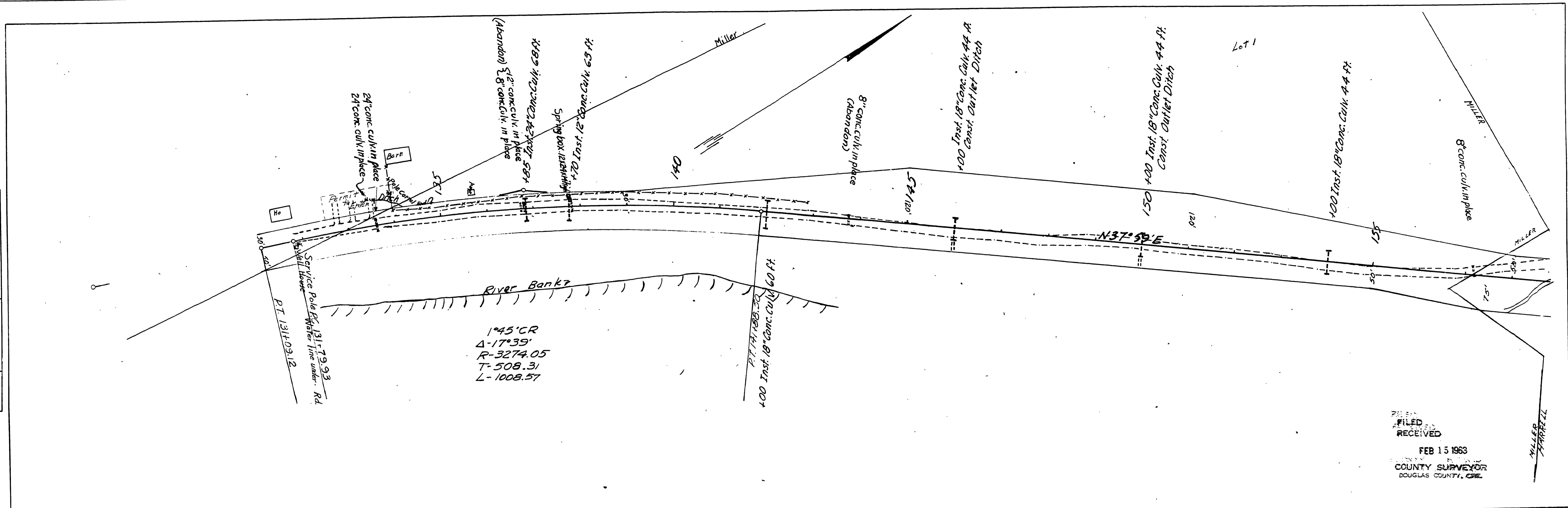
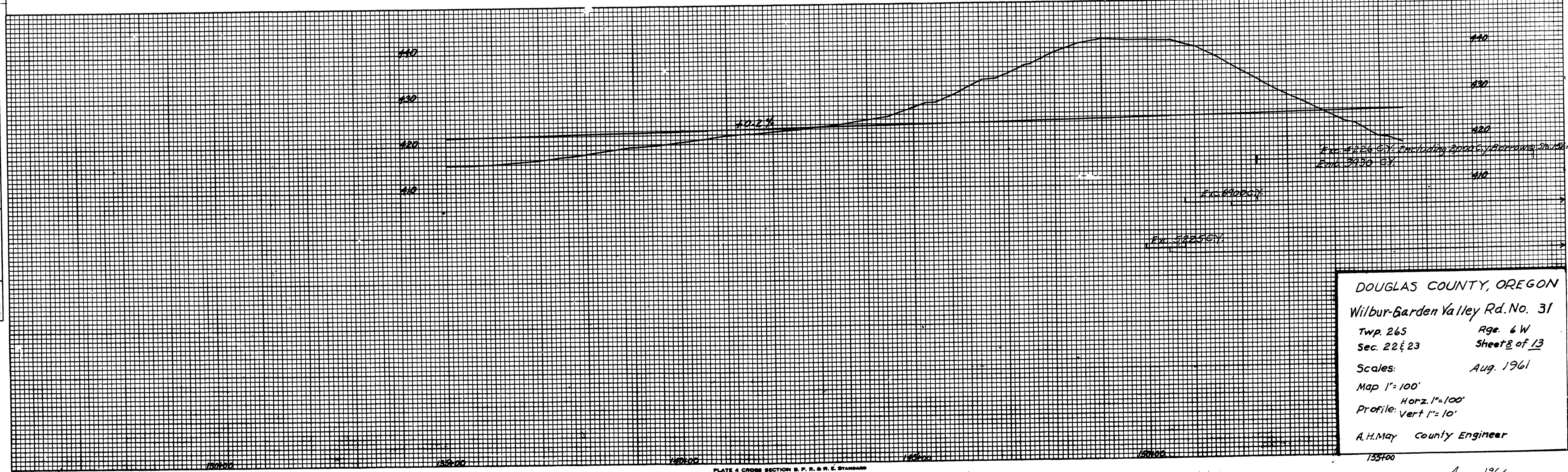


DATE	
BY	
SURVEYED	
PLOTTED	
TEMPLATE	
NOTE BOOK	
AREAS CHECKED	
FINAL SURVEY	
NO.	

DATE	
BY	
SURVEYED	
PLOTTED	
TEMPLATE	
NOTE BOOK	
AREAS CHECKED	
ORIGINAL SURVEY	
NO.	



FILED  
RECEIVED  
FEB 15 1963  
COUNTY SURVEYOR  
DOUGLAS COUNTY, ORE.



DOUGLAS COUNTY, OREGON  
Wilbur-Garden Valley Rd. No. 31  
Twp. 26S Rge. 6W  
Sec. 22E 23 Sheet 8 of 13  
Scales: Aug. 1961  
Map 1"=100'  
Profile: Horz. 1"=100'  
Vert 1"=10'  
A.H. May County Engineer

PLATE 4 CROSS SECTION S. P. R. & R. E. STANDARD  
MADE IN U.S.A. BY THE CHICAGO TOOL CO. CHICAGO - NEW YORK

M.P. 2493-2.55

Aug. 1961  
Co. Rd. #31  
St. 8 of 13

02930255

44