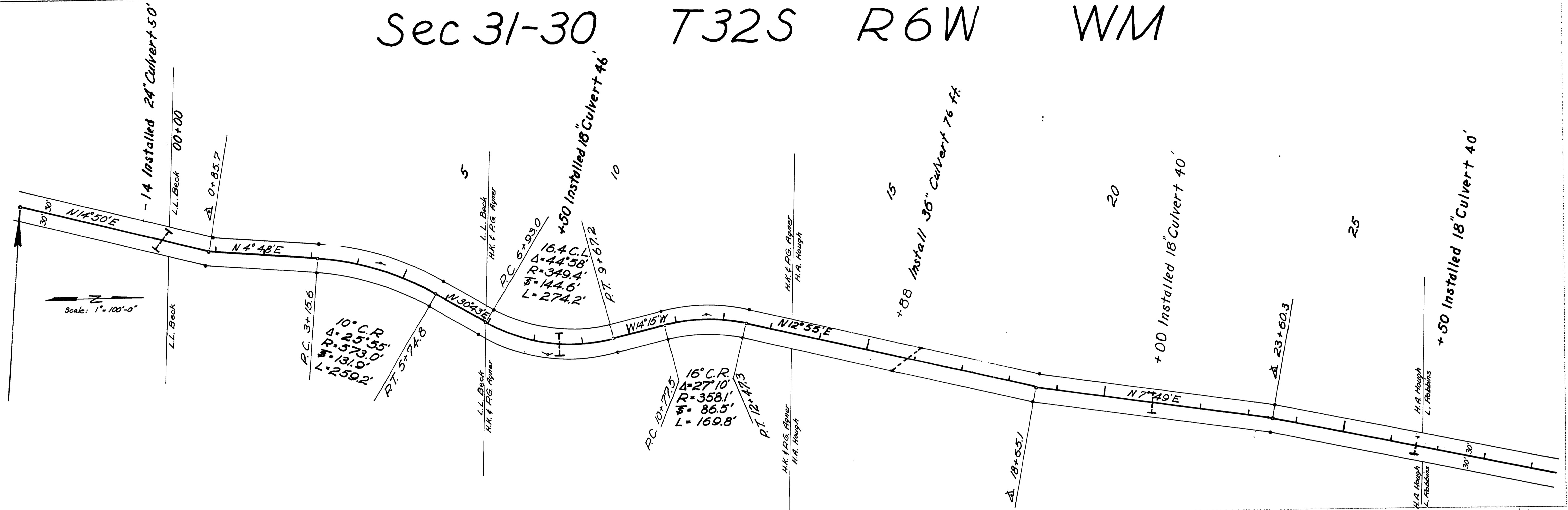
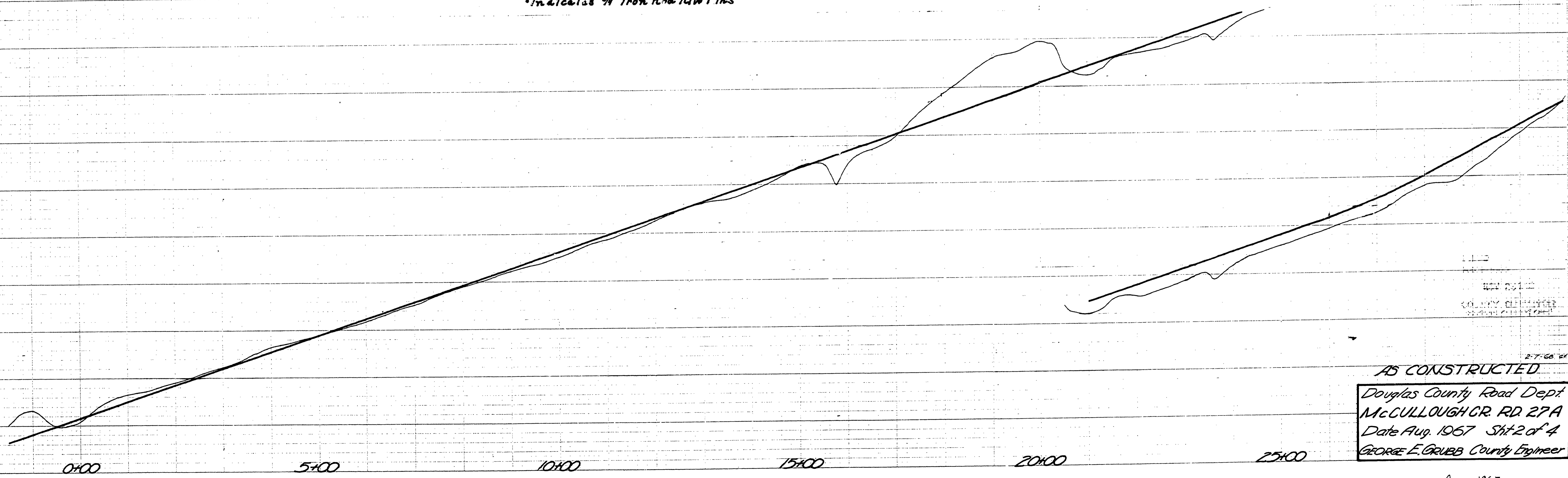


Sec 31-30 T32S R6W WM



*Indicates 3/4" Iron Rod R/W Pins



AS CONSTRUCTED
 Douglas County Road Dept
 McCULLOUGH CR. RD 27A
 Date Aug. 1967 Sht. 2 of 4
 GEORGE E. GRUBB County Engineer

Aug. 1967
 Co. Rd. # 27-A Sht. 2 of 4

M.P. 0.79-1.32

00790132