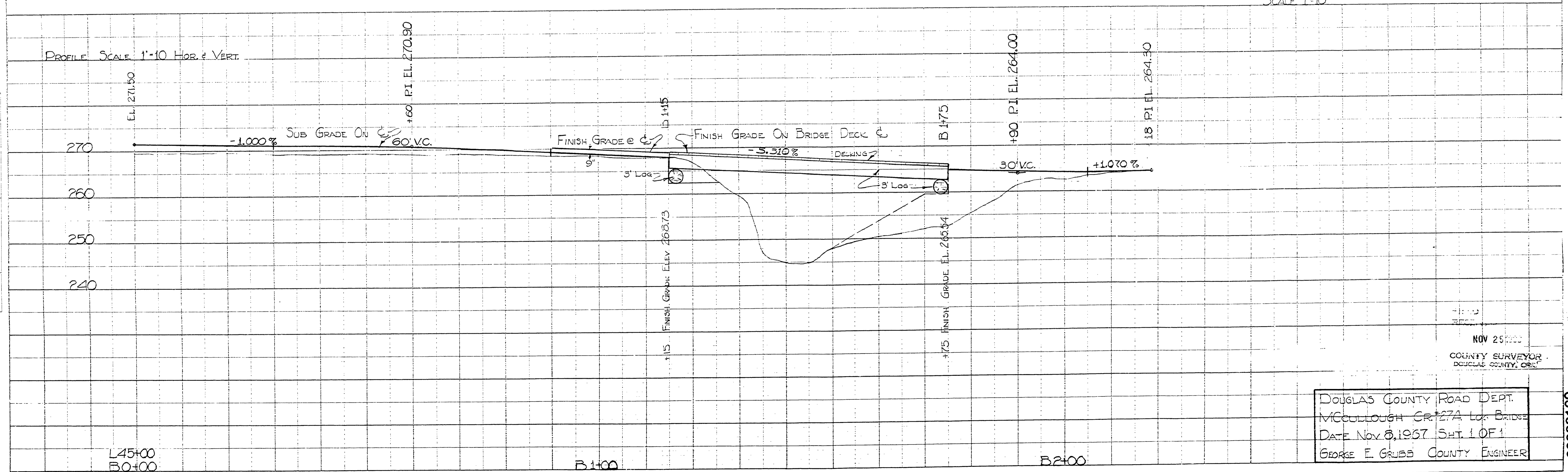
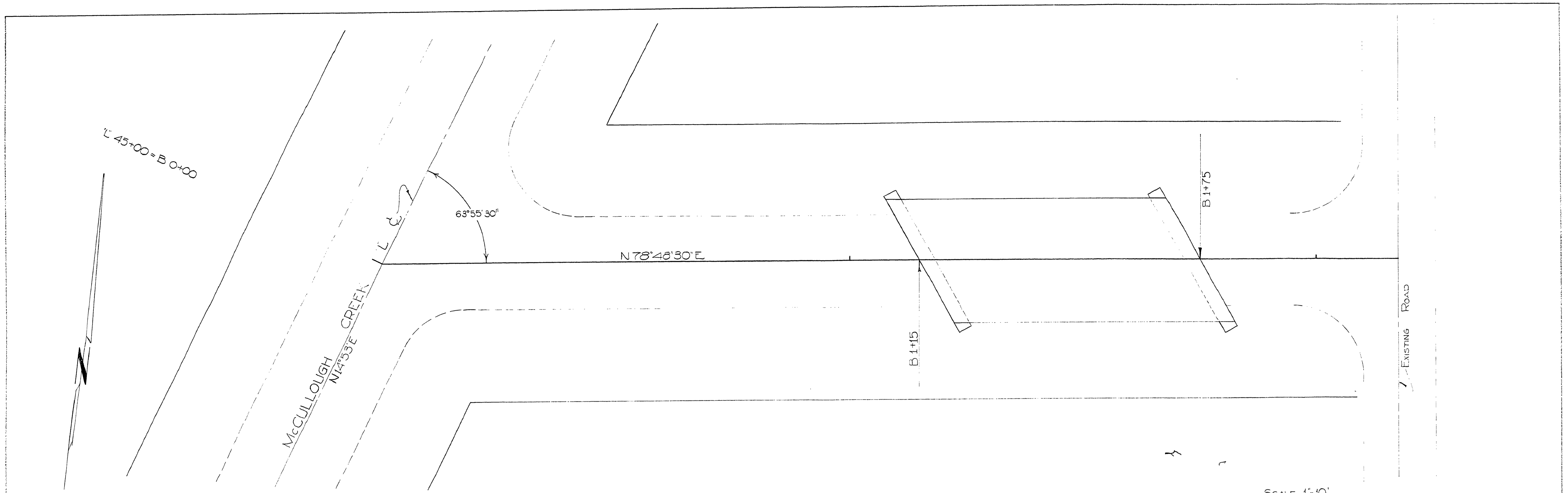


PLAN	SURVEYED	DATE
NOTE BOOK	PLOTTED	BY
NO.	REVISIONS	
	REVISIONS	
	REVISIONS	

PROFILE	SURVEYED	DATE
NOTE BOOK	PLOTTED	BY
NO.	REVISIONS	
	REVISIONS	
	REVISIONS	



NOV 25 1967  
 COUNTY SURVEYOR  
 DOUGLAS COUNTY, ORE.  
 DOUGLAS COUNTY ROAD DEPT.  
 MCCULLOUGH CR #27A LOG BRIDGE  
 DATE NOV 8, 1967 SH. 1 OF 1  
 GEORGE E. GRUBBS COUNTY ENGINEER

PLATE 1-PLAN-PROFILE O.P.R. & R.E. STANDARD  
 100 WAS PATENTED AND PRINTED IN U.S.A.  
 EUGENE DIETZGEN CO.

00000169