

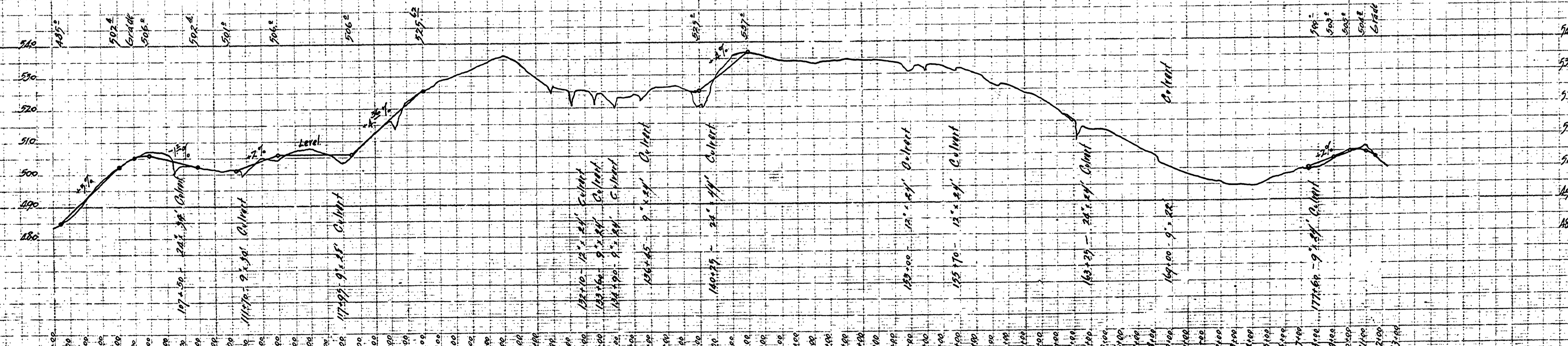
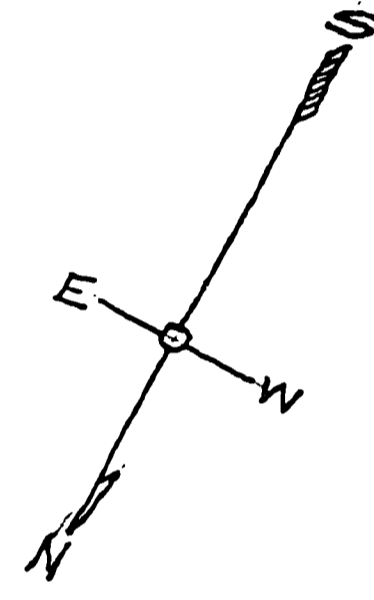
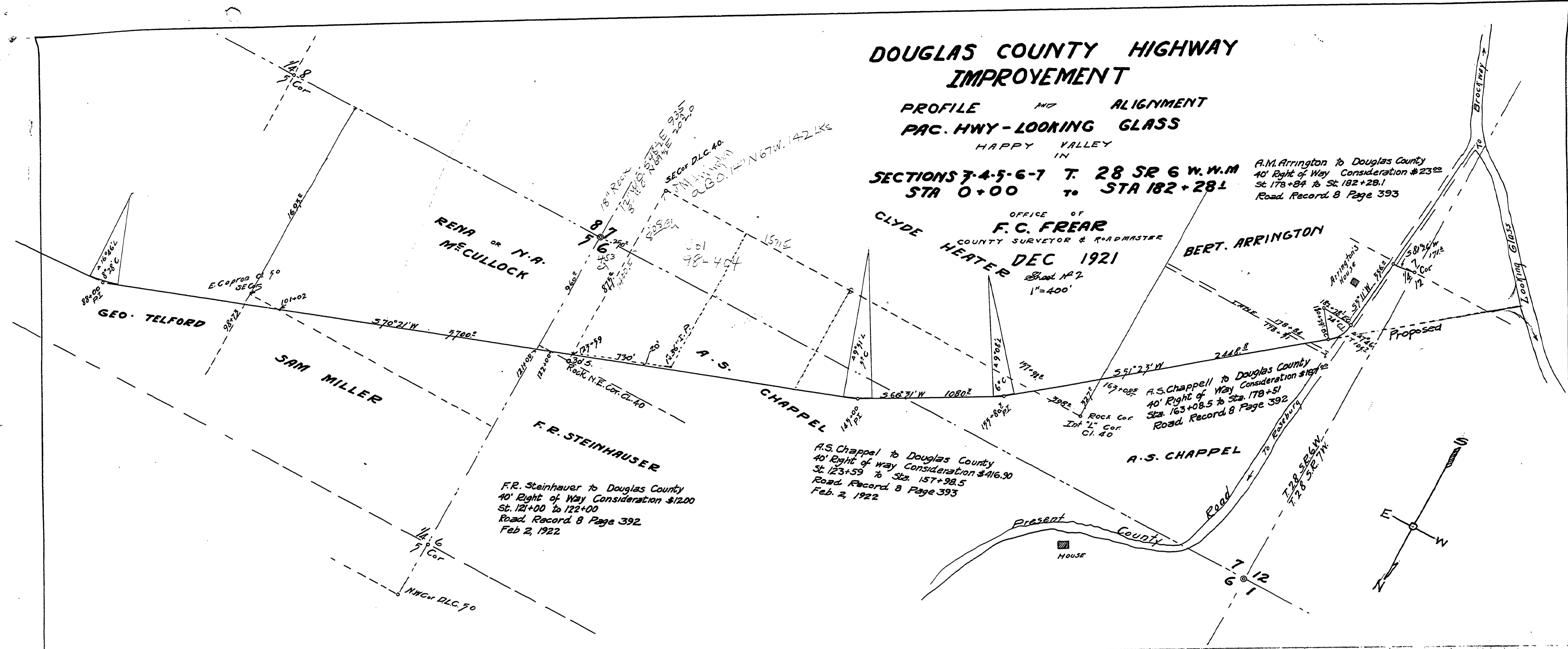
DOUGLAS COUNTY HIGHWAY IMPROVEMENT

PROFILE AND ALIGNMENT
 PAC. HWY - LOOKING GLASS
 HAPPY VALLEY IN

SECTIONS 7-4-5-6-7 T. 28 SR 6 W. W.M.
 STA 0+00 TO STA 182+28.1

A.M. Arrington to Douglas County
 40' Right of Way Consideration #2322
 St. 178+84 to St. 182+28.1
 Road Record 8 Page 393

OFFICE OF
F. C. FREAR
 COUNTY SURVEYOR & ROADMASTER
 CLYDE HEATER DEC 1921
 Sheet No. 7
 1"=400'



02580412

1921-12

C.26

~M.P. 2.22-4.12

T28-6 SEC 3,4,5,6,7 DEC. 1921 SH 20F2

3