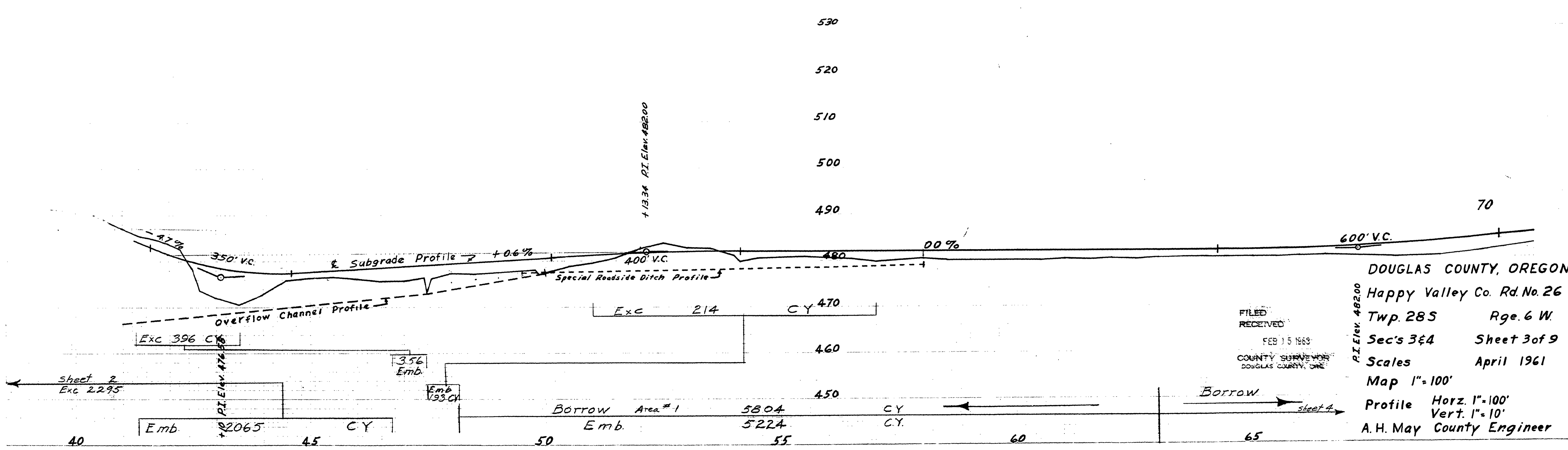
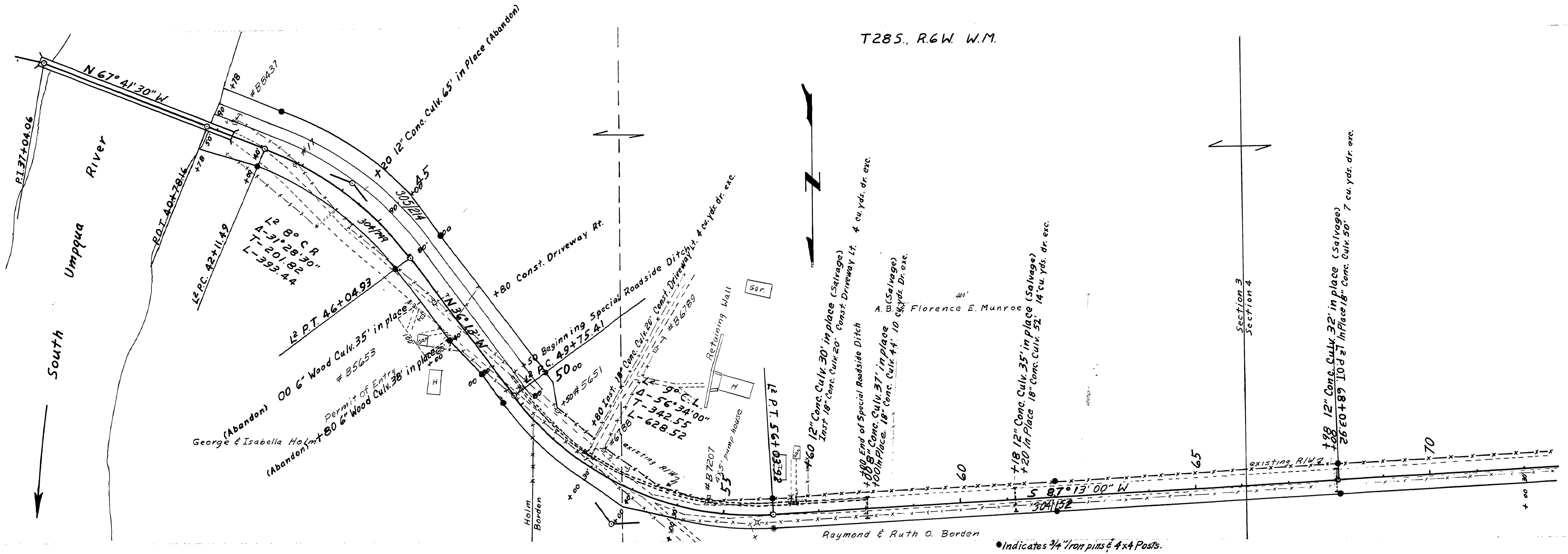


T285, R.6W. W.M.



DOUGLAS COUNTY, OREGON  
 Happy Valley Co. Rd. No 26  
 Twp. 28S Rge. 6 W.  
 Sec's 3&4 Sheet 3 of 9  
 Scales April 1961  
 Map 1"=100'  
 Profile Horz. 1"=100'  
 Vert. 1"=10'  
 A.H. May County Engineer

FILED  
 RECEIVED  
 FEB 15 1961  
 COUNTY SURVEYOR  
 DOUGLAS COUNTY, ORE.

Co. Rd # 26 APRIL, 1961  
 Sht. 3 of 9

M.P. 0.63-1.25

00630125