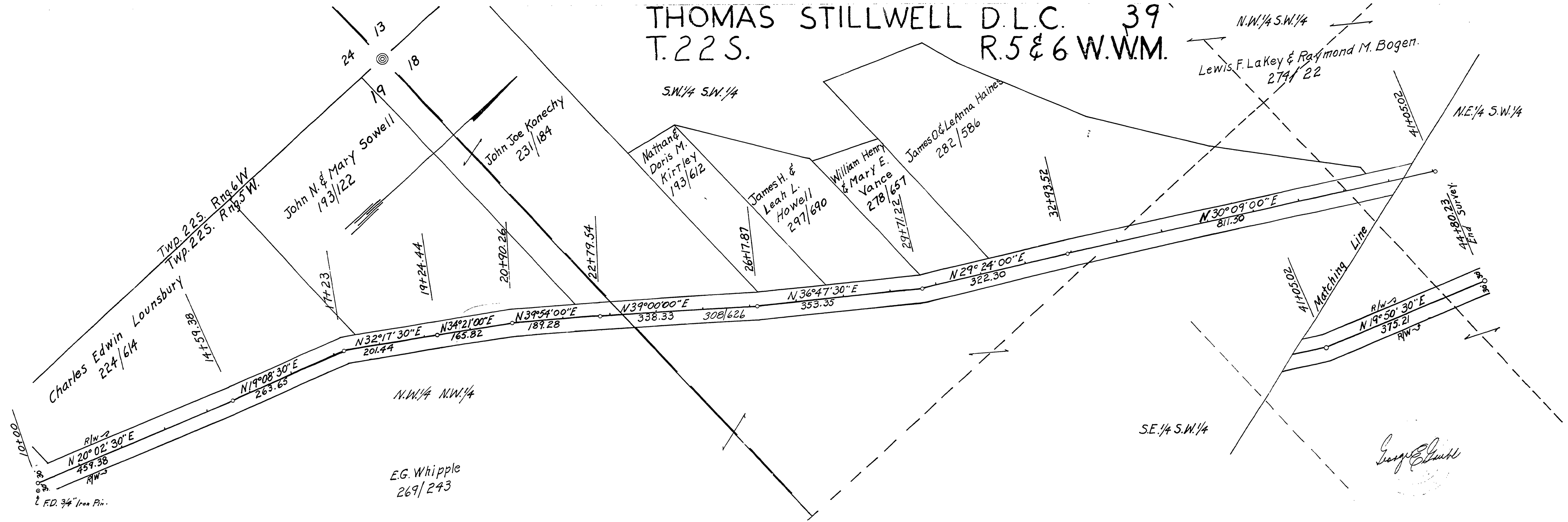


THOMAS STILLWELL D.L.C. 39
T.22S. R.5&6 W.W.M.



DOUGLAS COUNTY, OREGON
Hayhurst County Rd. No. 24
Twp. 22 S. Rge. 5 & 6 W
Section's 13-24-18-19 1961
Scales: Sheet 1 of 1
Map-Horz. 1"=100'
Profile Horz. 1"=100'
Vert. 1"=10'
A.H. May County Engr.

FILED
RECEIVED
FEB 15 1966
COUNTY SURVEYOR
DOUGLAS COUNTY, ORE.

08000865

M.P. 8.00 - 8.65

1961
C. Rd. # 24
Sht. 1 of 1 (39)