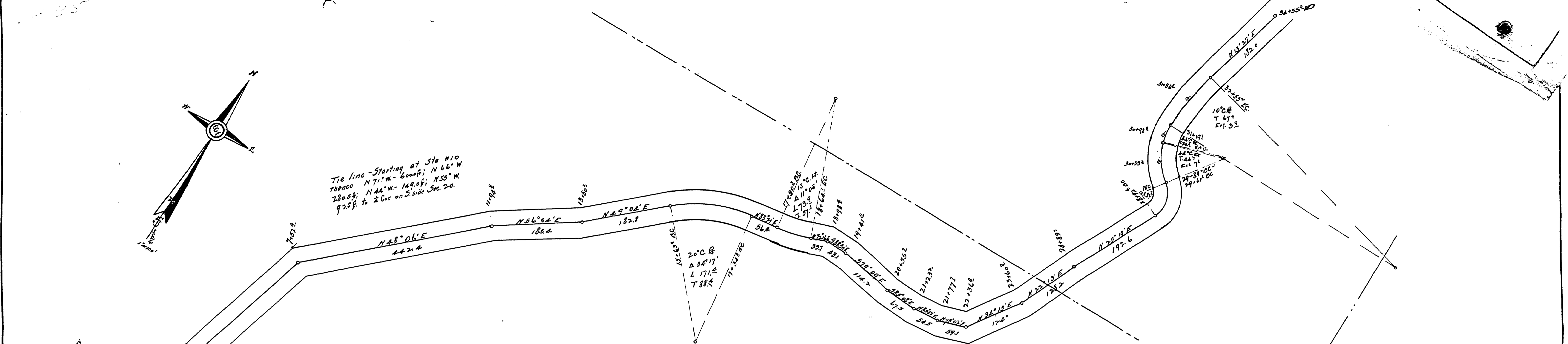


Tie line - Starting at Sta 110
 thence N 71° W - 600.0 ft; N 66° W -
 280.0 ft; N 44° W - 149.0 ft; N 55° W -
 92.5 ft to 1/2 Cor on S side Sec 20.

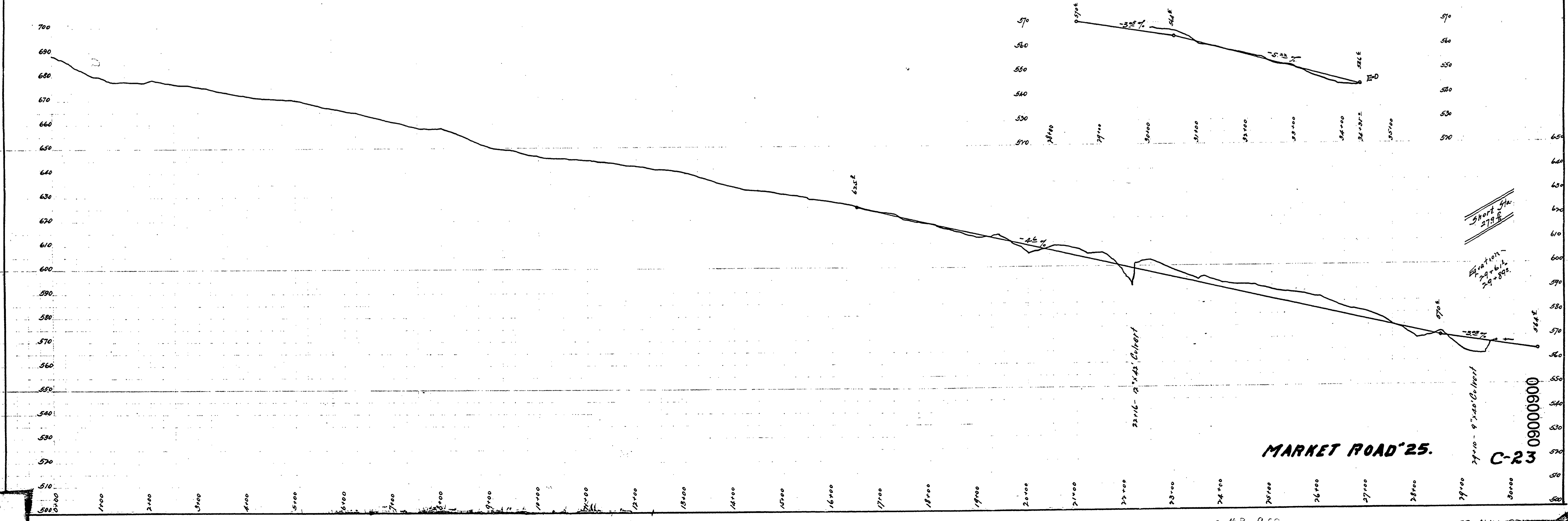


DOUGLAS COUNTY HIGHWAY IMPROVEMENT

PROFILE AND ALIGNMENT
 GREEN VALLEY ROAD
 DAVISON HILL
 IN

SECTIONS 20-29 Twp. 24 SR 6 W.W.M.
 STA 0+00 TO STA 34+35.2

OFFICE OF
F. C. FREAR
 COUNTY SURVEYOR & ROADMASTER
 MAY 1921



MARKET ROAD 25.

C-23