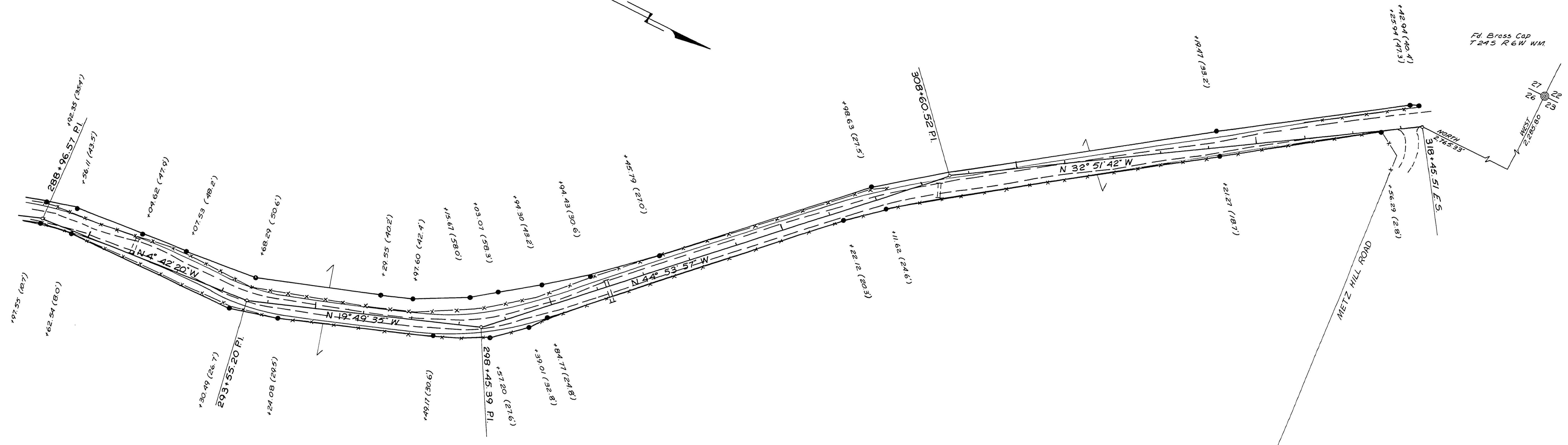


SEC. 26 T. 24 S. R. 6 W. W.M.

RD. 23 Sht. 6

W.D. & DELOARNE HENRY  
BK 293 PG. 315



FIELD  
 NOT REVISION  
 AS CALCULATED

DOUGLAS COUNTY ROAD DEPT.  
 GREEN VALLEY ROAD NO. 23  
 1973 SHT. 6  
 GEORGE E. GRUBB, COUNTY ENGR.

05510603

M.P. 5.21-6.03

C. Rd #23 1973 Sht 6 of 6 (123)

