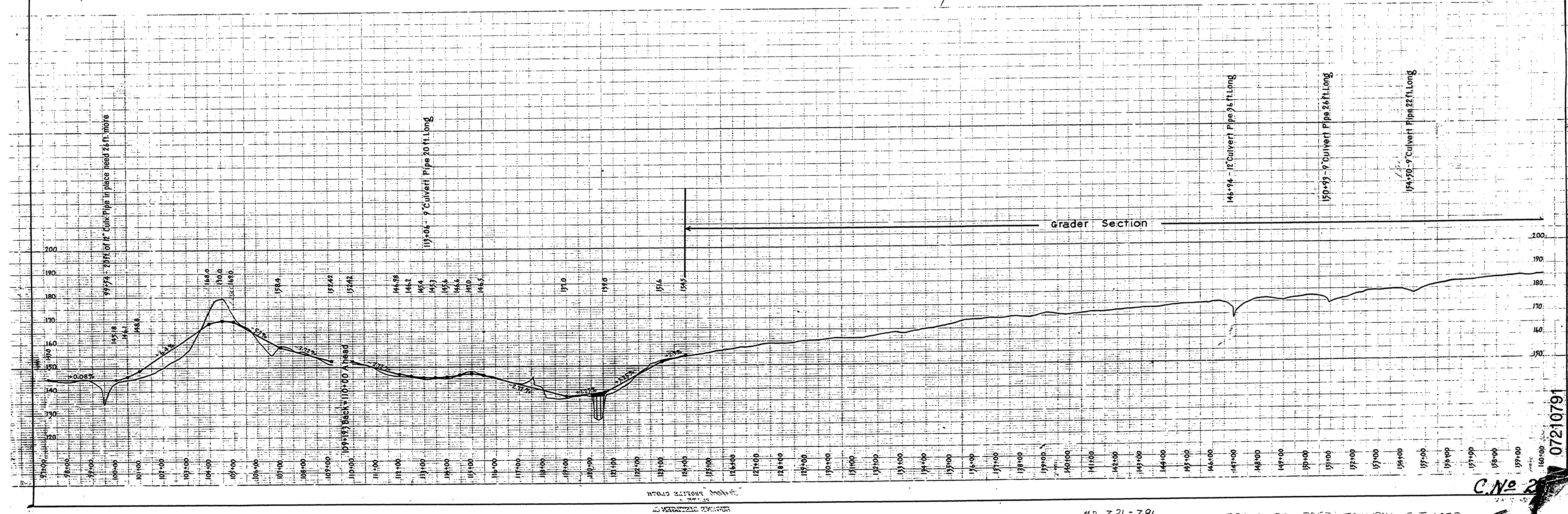


**DOUGLAS COUNTY HIGHWAY
IMPROVEMENT
PROFILE AND ALIGNMENT
OAKLAND TO WARD COCKERANS
HALL SECTION**
SECTIONS 20 & 21, TWP 24S., RANGE 4 W.W.M.
STA. 97+65.0 TO STA. 22+52.3
OFFICE OF
F. C. FREAR
COUNTY ROADMASTER
JULY 1922
SCALE: Hor. 1 in. = 200 ft. VERTICAL 1 in. = 20 ft.
SHEET NO. 1



07210791
C.No. 2