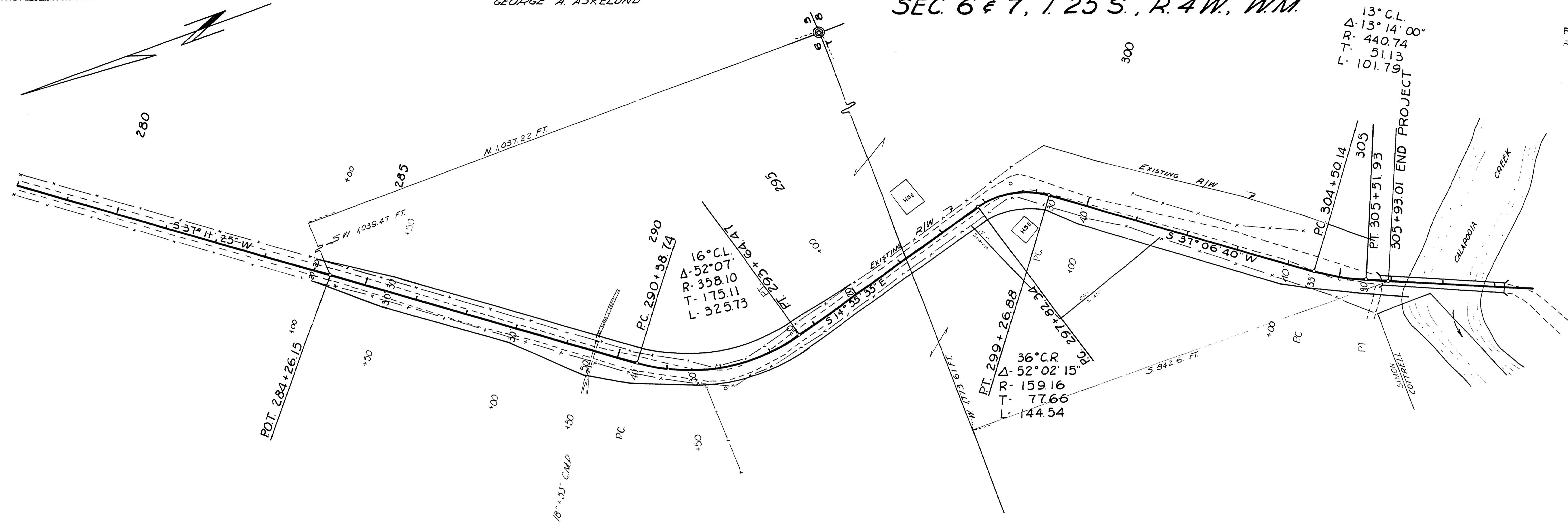


GEORGE A. ASKELUND

SEC 6 & 7, T.25 S., R. 4 W., W.M.

13° C.L.  
Δ- 13° 14' 00"  
R- 440.74  
T- 51.13  
L- 101.79

FILED  
RECEIVED  
MAY 2 1969  
ENGINEER  
GEORGE E. GRUBB



P.O.T. 284+26.15

P.C. 290+38.74

P.T. 299+26.88

P.C. 304+50.14

P.T. 305+51.93

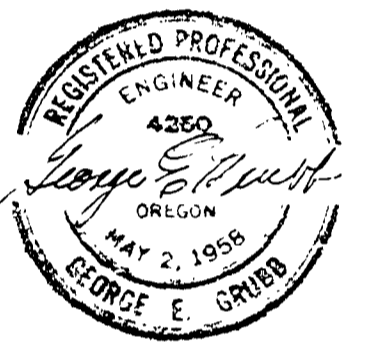
16° C.L.  
Δ- 52° 07'  
R- 358.10  
T- 175.11  
L- 325.73

36° C.R.  
Δ- 52° 02' 15"  
R- 159.16  
T- 77.66  
L- 144.54

LES & CECELIA A. SIMON

PASCAL F. & JEANNE C. BIERBRAND J. 326 P. 572

AGNES COTTRELL V. 13 P. 408, P. # 8758



DOUGLAS COUNTY RD. DEPT.  
 DRIVER VALLEY ROAD 22  
 JUNE 1969 SHEET 1 of 1  
 GEORGE E. GRUBB CO. ENGINEER

12901336

M.P. 12.90-13.36

T.25-S. SEC. 6, 7.  
 June 1969 SHEET 1 of 1  
 Co. Rd # 22