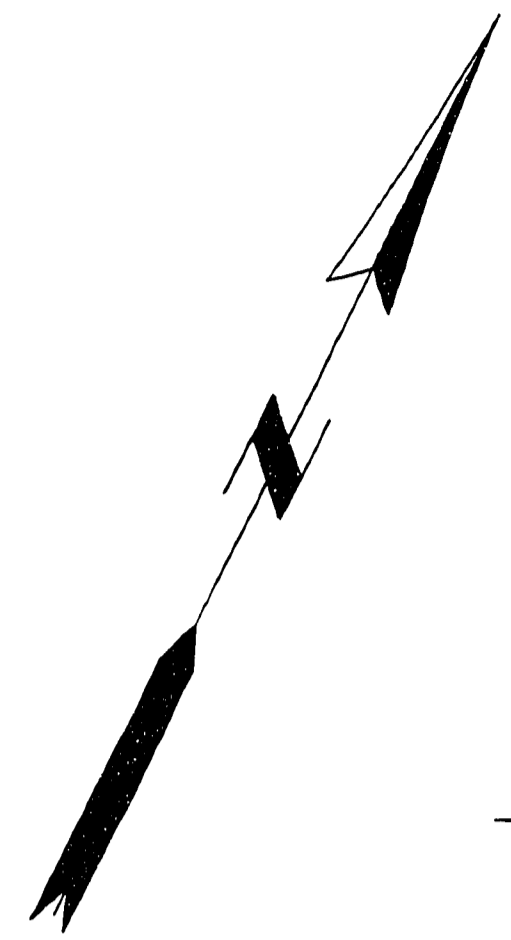
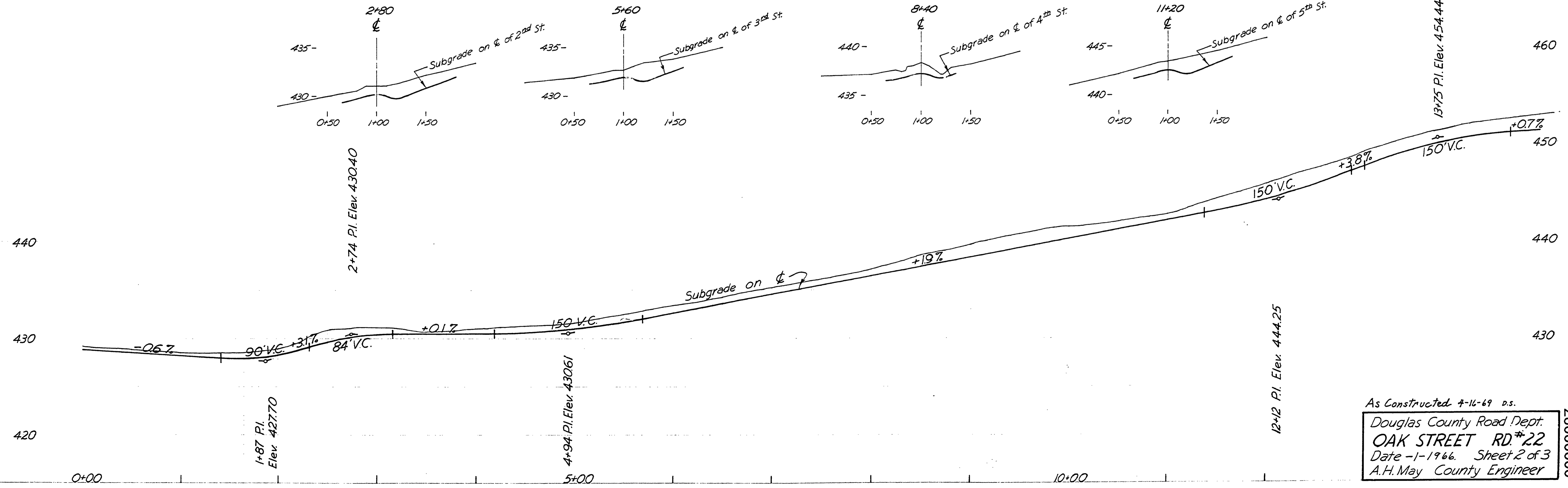
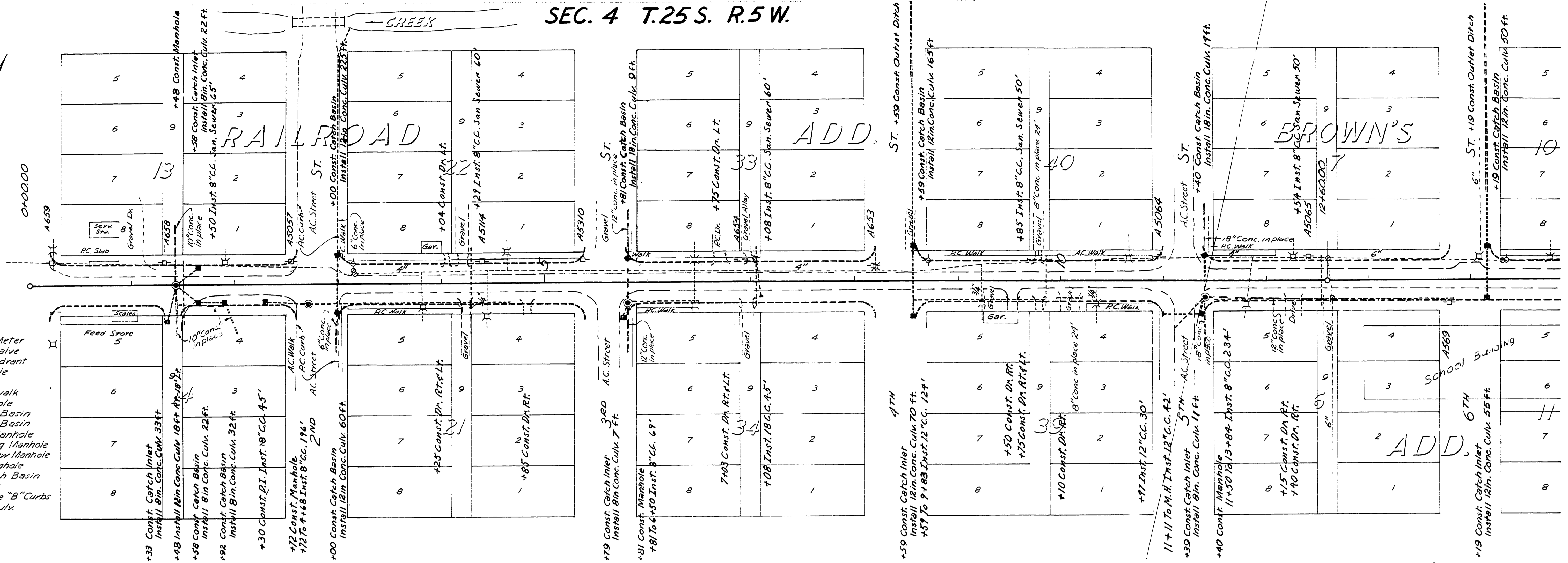


SEC. 4 T.25 S. R.5 W.



- Existing Water Meter
- Existing Water Valve
- Existing Fire Hydrant
- Existing Manhole
- Power Pole
- ▨ Remove Sidewalk
- ▨ Remove Manhole
- ▨ Remove Catch Basin
- ▨ Remove Catch Basin & Construct Manhole
- ▨ Remove Existing Manhole & Construct New Manhole
- Construct Manhole
- Construct Catch Basin or Catch Inlet
- Construct Type "B" Curbs
- Install Conc. Cully.



As Constructed 4-16-69 ds.
 Douglas County Road Dept.
OAK STREET RD #22
 Date - 1-1966 Sheet 2 of 3
 A.H. May County Engineer

00000027