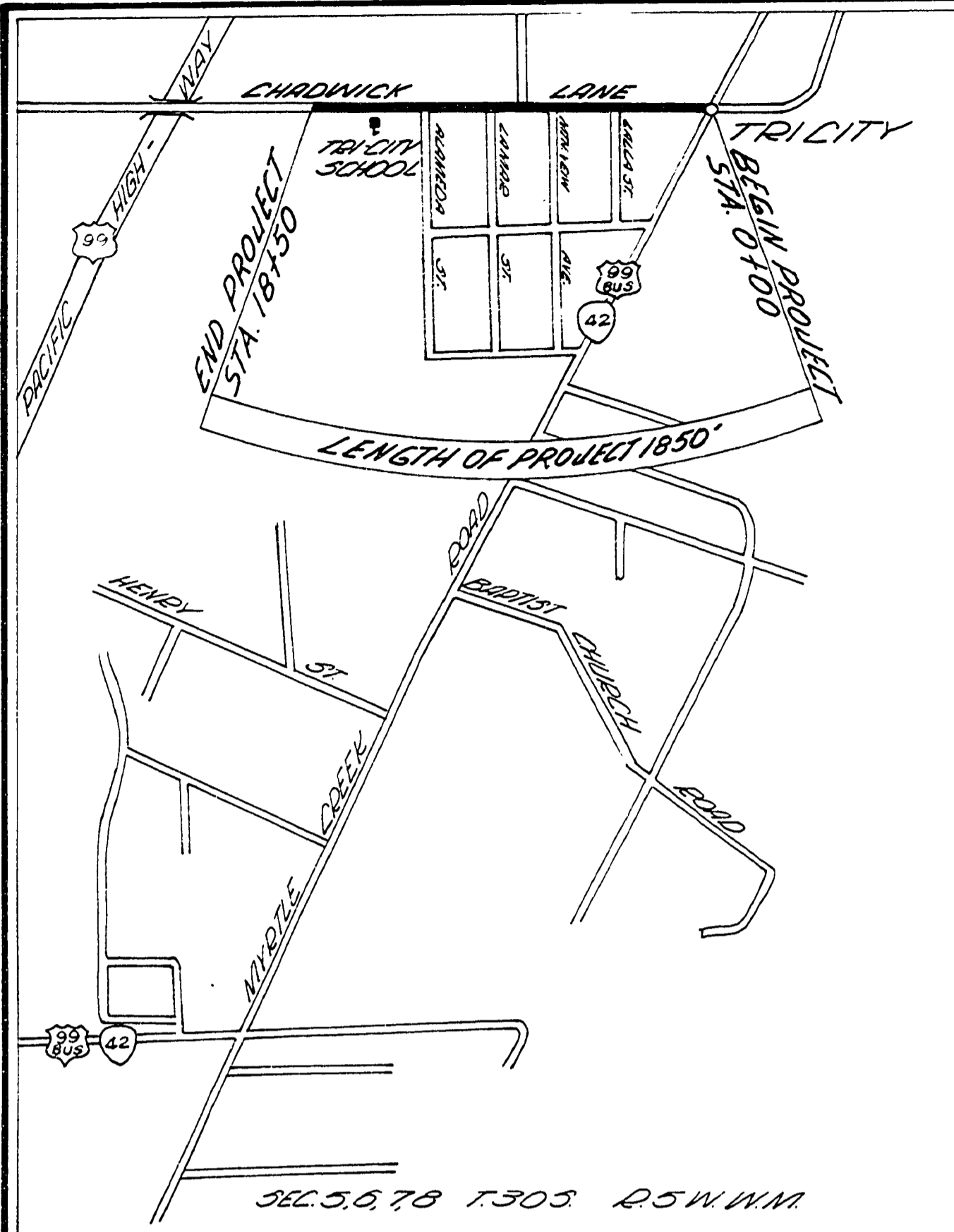
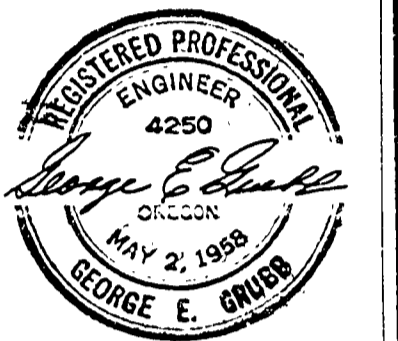
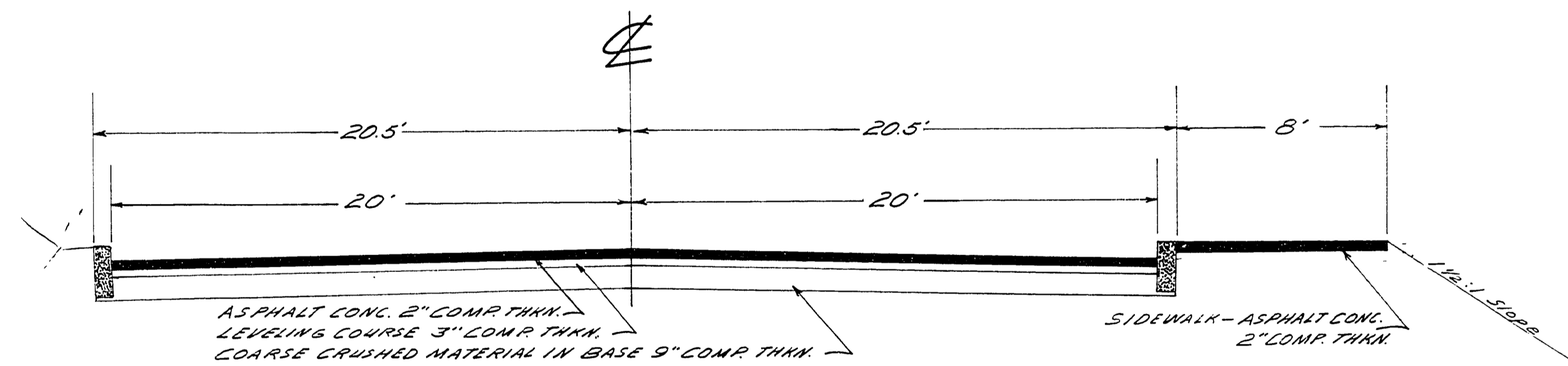


DOUGLAS COUNTY OREGON PLANS FOR PROPOSED PROJECT GRADING SURFACING MISSOURI BOTTOM RD.# 20B

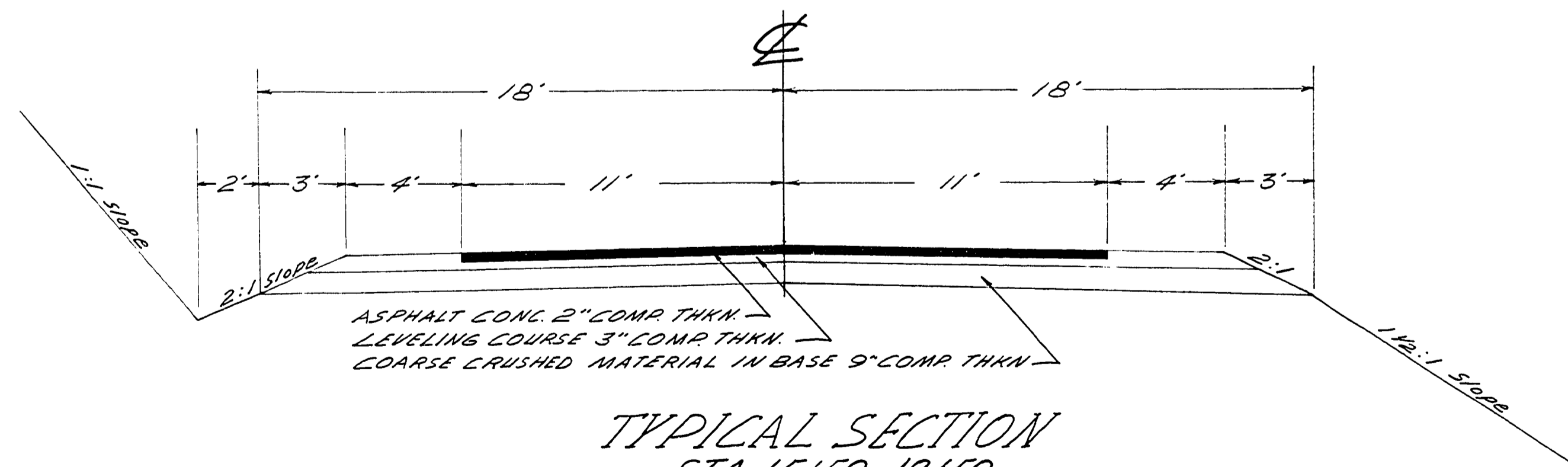


VICINITY MAP

QUANTITY SUMMARY				
ITEM	UNIT	QUANTITY	ALLOWANCE	TOTAL
1. Clearing & Grubbing	Lump Sum	All Specified	All Specified	All Specified
2. General Excavation (Uncl.)	C.Y.	2985	299	3284
3. Trench Excavation (Uncl.)	C.Y.	850	85	935
4. 8" Concrete Culvert	Lin. Ft.	216	21	237
5. 18" Concrete Culvert	Lin. Ft.	228	20	248
6. 24" Concrete Culvert	Lin. Ft.	1312	132	1444
7. Concrete Catch Inlets	Each	4	1	5
8. Ditch Interceptor Catch Basin	Each	1	0	1
9. Concrete Catch Basins	Each	8	1	9
10. Concrete Manhole	Each	1	0	1
11. Concrete Curbs Class "B"	Lin. Ft.	2935	295	3230
12. Coarse Crushed Matl. In Base	C.Y.	1750	175	1925
13. 3/4" 0 Matl. In Leveling Course	C.Y.	870	90	960
14. Asphalt Concrete Class "B"	Tons	834	83	917
15. Extra For Asphalt Conc. Sidewalks	Tons	130	13	143
16. Sprinkling	M. Gal.	144	14	158
17. Driveways	Each	5	0	5



TYPICAL SECTION
STA. 0+10-15+50



TYPICAL SECTION
STA. 15+50-18+50

FILED
RECEIVED
MAY 22 1966
COUNTY SURVEYOR
DOUGLAS COUNTY, OREGON

SHEET 1 OF 3