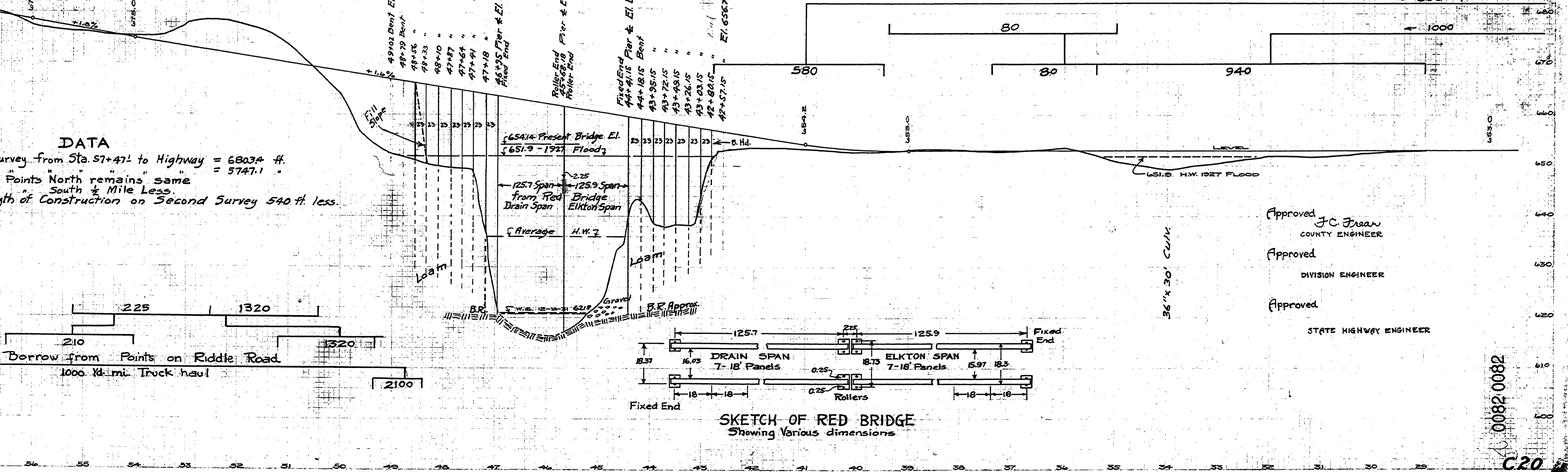


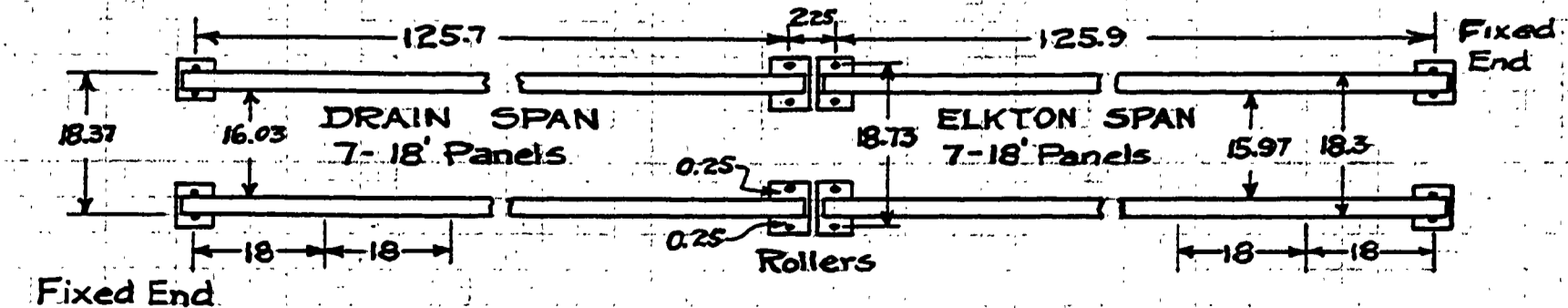
DOUGLAS CO. OREGON  
 RIDDLER - PACIFIC HIGHWAY  
 M. RD. No 20  
 SECOND SURVEY  
 SEC. 7 - T. 30 S. - R. 5 W. - W.M.  
 SEC. 12 - T. 30 S. - R. 6 W. - W.M.  
 F.C. Frear Co. Engr.  
 1932

o DESIGNATES 3/4" X 3/8" STEEL PIN  
 4" X 4" WHITE POST (INSIDE R/W)

**DATA**  
 By First Survey from Sta 57+47.1 to Highway = 6803.4 ft.  
 Second " " " " " " " " = 5747.1 " "  
 Distance to Points North remains same  
 South 1/2 Mile Less  
 Actual Length of Construction on Second Survey 540 ft. less.



Approved J.C. Frear  
 COUNTY ENGINEER  
 Approved  
 DIVISION ENGINEER  
 Approved  
 STATE HIGHWAY ENGINEER



SKETCH OF RED BRIDGE  
 Showing Various dimensions

0082 0082  
 C20