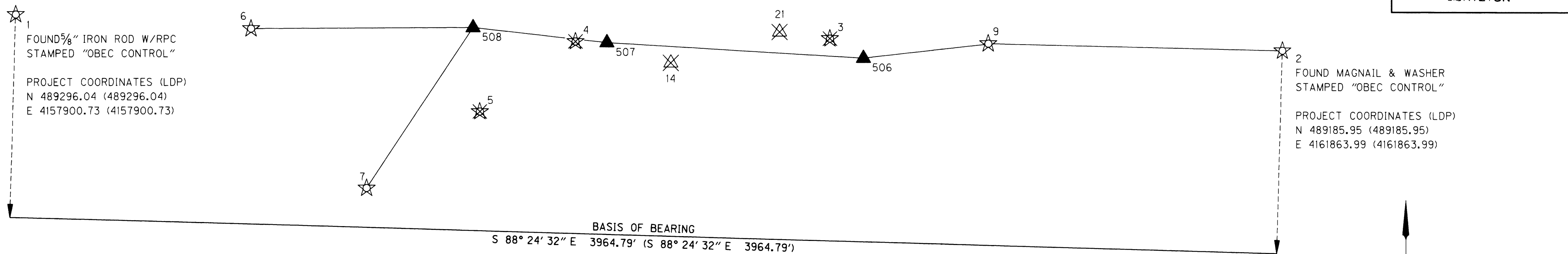


S.E. 1/4 SEC. 12, T.30 S., R.6 W., W.M.  
S.W. 1/4 SEC. 7, T.30 S., R.5 W., W.M.

**FILED**  
Date: 7-21-2010 By: J.C.  
This survey consists of:  
Map: Co. Rd. 20  
Narrative: 4 pgs  
Corner Rpt:  
**DOUGLAS COUNTY SURVEYOR**



**CONTROL NARRATIVE**

PROJECT: SOUTH UMPQUA (PRUNER RD.) BRIDGE  
LOCATION: DOUGLAS COUNTY  
ODOT KEY NUMBER: 12550  
OBEC PROJECT: 019-076.55  
SURVEY DATUM:  
HORIZONTAL - LOCAL DATUM PLANE (LDP) DERIVED FROM  
OREGON STATE PLANE, SOUTH ZONE - NAD 83(CORS96)  
EPOCH 2002 (INTERNATIONAL FEET) PER CS M148-21(A-F)

BEARING BASE: GRID NORTH PER COUNTY SURVEY NUMBER M148-21(A-F)

THE INITIAL CONTROL NETWORK MONUMENTATION WAS ESTABLISHED IN RETRACEMENT SURVEY NUMBER M148-21. THIS CONTROL NETWORK WAS USED AS SHOWN HEREON. THREE NEW POINTS WERE ADDED TO THE EXISTING CONTROL NETWORK, REPLACING POINTS LOST DURING THE CONSTRUCTION OF THE BRIDGE. A SECOND ADJUSTMENT WAS MADE TO THE NEW CONVENTIONALLY SET NETWORK POINTS CONSTRAINING TO THE REMAINING CONTROL MONUMENTS SET IN 2005 AS FILED ON SURVEY NUMBER M 148-21.

THIS SURVEY UTILIZED A LOCAL DATUM PLANE (LDP) COORDINATE SYSTEM, WHICH IS RELATIVE TO THE OREGON STATE PLANE COORDINATE SYSTEM - SOUTH ZONE, NAD 83(CORS96) EPOCH 2002 (INTERNATIONAL FEET). TO CONVERT THE LDP COORDINATES TO THE OREGON STATE PLANE COORDINATE SYSTEM - SOUTH ZONE, NAD 83(CORS96) EPOCH 2002 (INTERNATIONAL FEET), MULTIPLY THE LDP COORDINATE VALUES BY A COMBINED FACTOR OF 0.99987180.

CONTROL POINTS FOR THIS SURVEY WERE NOT SET ON NOR DO THEY REPRESENT PROPERTY LINES OR RIGHT-OF-WAY LINES AND ARE INTENDED FOR USE SOLELY BY DOUGLAS COUNTY, OREGON AND OBEC CONSULTING ENGINEERS IN SUPPORT OF FUTURE PROJECTS. IT IS NOT OUR INTENT TO PERPETUATE THESE CONTROL POINTS AS MONUMENTS.

**RESIDUALS FOR DISTANCES**

BETWEEN	DISTANCE**	DISTANCE RESIDUAL
9 506	362.15'	0.01'
506 507	813.68'	0.00'
507 508	470.68'	0.01'
508 6	675.60'	0.00'
508 7	614.60'	0.01'

\*\* CALCULATED HORIZONTAL DISTANCES IN FEET DERIVED FROM THE MEASURED SLOPE DISTANCES

**RESIDUALS FOR ANGLES**

BACKSIGHT STATION	OCCUPIED STATION	FORESIGHT STATION	RESIDUAL
2	9	506	00°00'00"
9	506	507	00°00'02"
506	507	508	00°00'00"
507	508	6	-00°00'03"
507	508	7	00°00'04"

**1.96 SIGMA (95%) CONFIDENCE LEVEL LIMITS**

POINT NO.	SEMI MAJOR	SEMI MINOR	ORIENTATION*
506	0.02 ift	0.01 ift	173.8°
507	0.02 ift	0.01 ift	172.5°
508	0.02 ift	0.02 ift	155.4°

\* NORTH AZIMUTH  
FIXED POINTS NOT SUBJECT TO LEAST SQUARES  
ADJUSTMENT OR CONFIDENCE LEVEL ANALYSIS: 2, 9, 6, 7

**CONTROL NETWORK SCHEMATIC & BASIS OF BEARING**

NOT TO SCALE

CS = COUNTY SURVEY

**LEGEND**

- ☆ FOUND GPS NETWORK POINT PER CS M148-21, USED AS CONTROL
- ▲ SET NETWORK POINT
- ⊗ DESTROYED GPS NETWORK POINT PER CS M148-21
- ⊗ DESTROYED NETWORK POINT PER CS M148-21
- ☆ LINES OF OBSERVATION (INTERVISIBLE)
- ( ) RECORD INFORMATION PER CS M148-21

**NETWORK POINT COORDINATE TABLE**

FND = FOUND  
RPC = RED PLASTIC CAP

PT. ID.	LDP NORTHING	LDP EASTING	DESCRIPTION
1	489296.04	4157900.73	FND 5/8 "x 30" REBAR W/ RPC "OBEC CONTROL"
2	489185.95	4161863.99	FND MAGNAIL & WASHER "OBEC CONTROL"
3	489223.06	4160448.23	FND 5/8 "x 30" REBAR W/ RPC "OBEC CONTROL" - DESTROYED
4	489213.15	4159651.91	FND MAGNAIL & WASHER "OBEC CONTROL" - DESTROYED
5	489302.50	4159288.17	FND MAGNAIL & WASHER "OBEC CONTROL" - DESTROYED
6	489251.42	4158636.93	FND MAGNAIL & WASHER "OBEC CONTROL"
7	488754.88	4158998.76	FND MAGNAIL & WASHER "OBEC CONTROL"
8	490143.90	4158961.14	FND 3-1/2" BRASS DISK SET IN CONCRETE MARKED "D499"
9	489207.37	4160944.02	FND MAGNAIL & WASHER "OBEC CONTROL"
14	489146.97	4159950.77	FND 5/8 "x 30" REBAR W/ RPC "OBEC CONTROL" - DESTROYED
21	489243.35	4160290.89	FND 5/8 "x 30" REBAR W/ RPC "OBEC CONTROL" - DESTROYED
506	489145.29	4160587.24	SET 5/8 "x 30" REBAR W/ RPC "OBEC CONTROL"
507	489204.58	4159775.73	SET MAGNAIL & WASHER "OBEC CONTROL"
508	489283.80	4159311.76	SET MAGNAIL & WASHER "OBEC CONTROL"

REGISTERED PROFESSIONAL LAND SURVEYOR

LOGAN MILES  
OREGON  
JULY 12, 2005  
LOGAN MILES  
65452  
RENEWAL: DEC. 31, 2010

OBEC CONSULTING ENGINEERS  
Corporate Office: 920 COUNTRY CLUB ROAD, SUITE 100B EUGENE, OREGON 97401-6089, 541-683-6090  
2235 MISSION STREET SE, SUITE 100 SALEM, OREGON 97302-1295, 503-589-4100  
831 O'HARE PARKWAY MEDFORD, OREGON 97504-4005, 541-774-5590  
5005 SW MEADOWS ROAD, SUITE 120 LAKE OSWEGO, OREGON 97035, 503-620-6103

OREGON DEPARTMENT OF TRANSPORTATION  
RIGHT-OF-WAY BOUNDARY MONUMENTATION SURVEY  
S. UMPQUA RIVER (PRUNER RD.) BRIDGE  
DOUGLAS COUNTY, OREGON

ODOT REGION 3  
3500 NW STEWART PARKWAY  
ROSEBURG, OR 97470  
DECEMBER, 2009  
NO SCALE  
KEY NO 12550  
SHEET 2 OF 4

DESIGNED: LOGAN MILES  
DRAWN: LOGAN MILES  
CHK'D: WAYNE DONOVAN  
PROJ. NO. 19-76.55

Co. Rd. # 20 MP 0.611 - 1.11  
**CO. RD. 20**