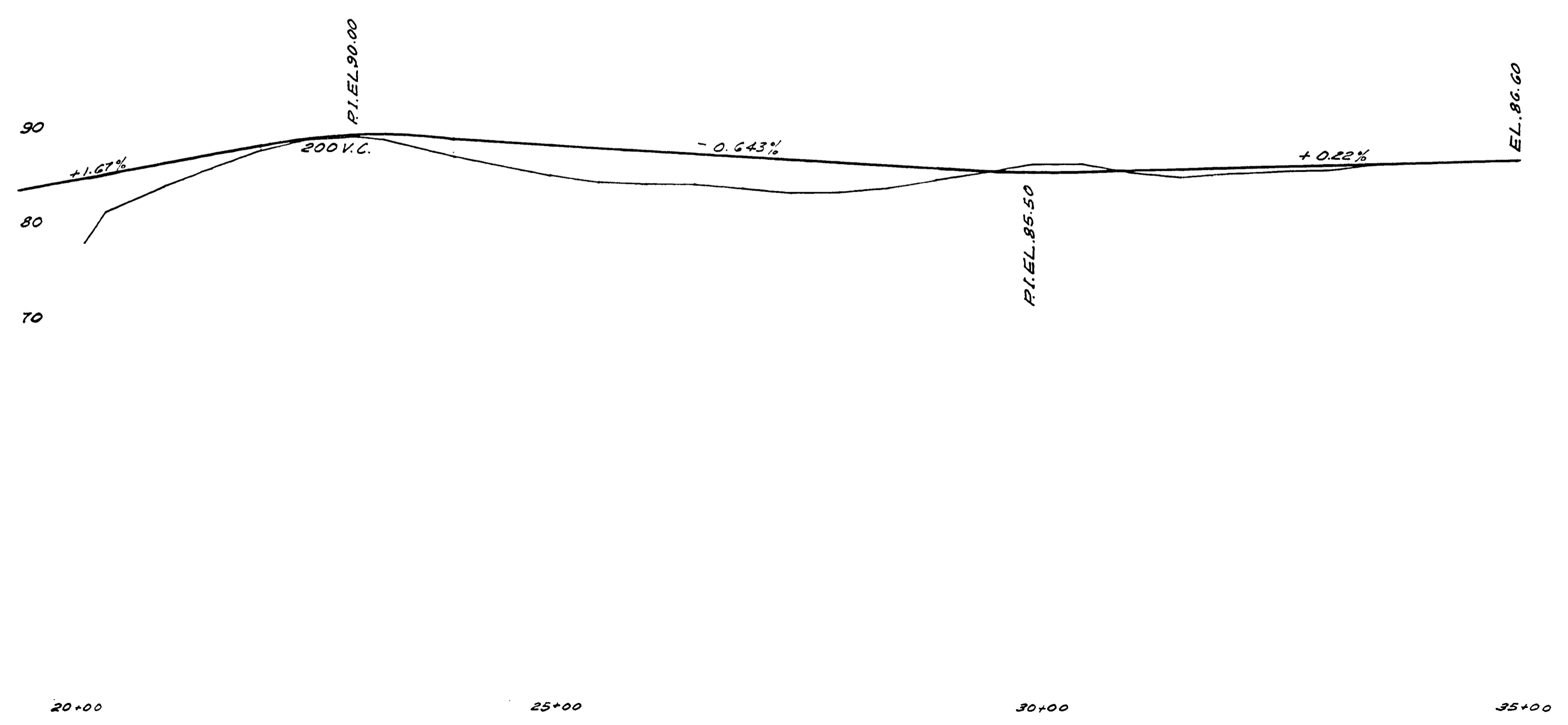
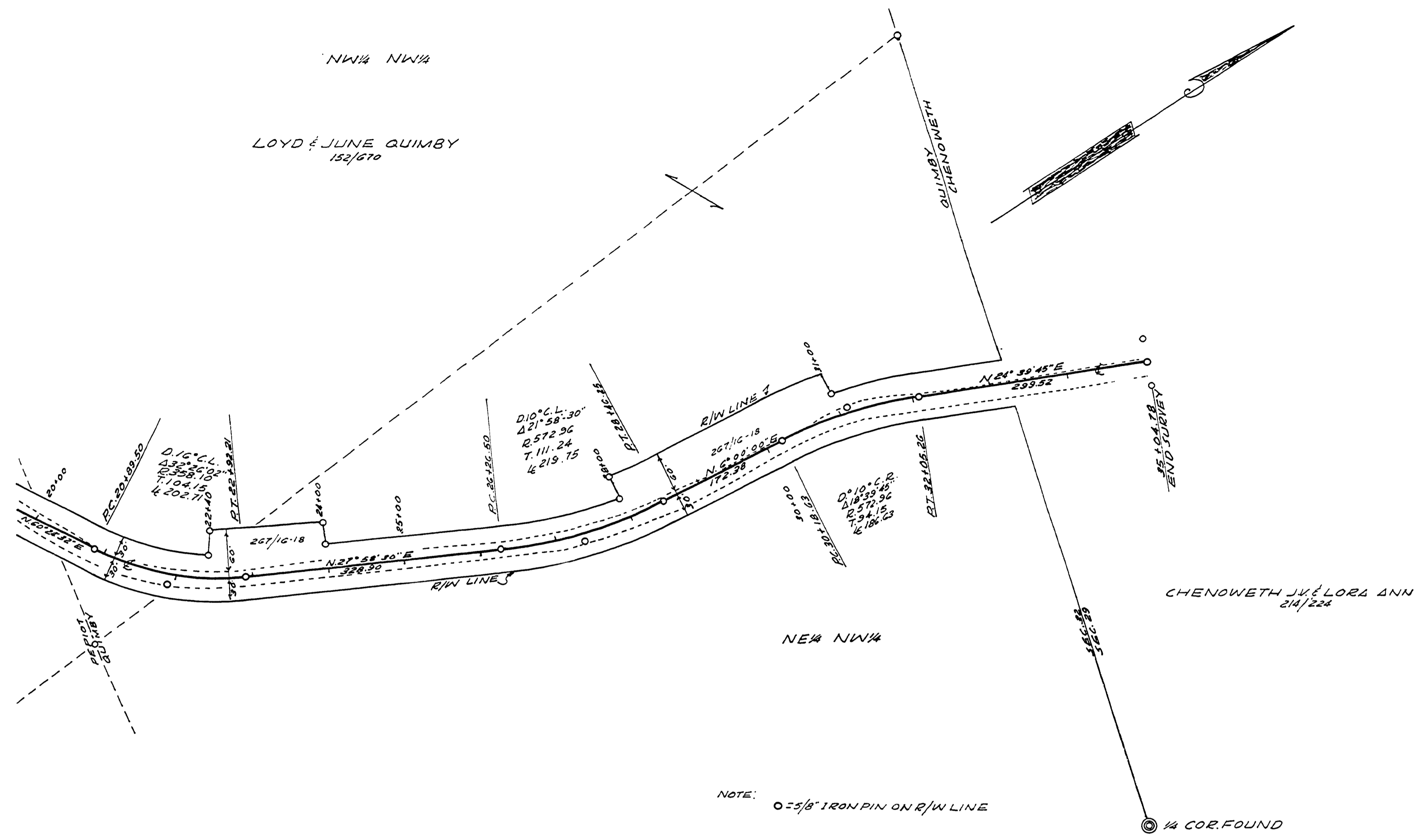


FILES
RECEIVED
JUL 10 1956
COUNTY SURVEYOR
DOUGLAS COUNTY ORE



DOUGLAS COUNTY OREGON
SUTHERLIN-NONPARIEL RD. NO. 19
TWP. 24S JULY 1956
RNG. 3W SHEET 2 OF 2
SEC. 29 & 32
MAP 1" = 100'
SCALES HOR. 1" = 100'
 VERT. 1" = 10'
A.H. MAY COUNTY ENGINEER

14141431

M.P. 14.14 - 14.31

Pl # 17 200-1956 20-3-2

