

Co. Rd 18

N.W. Cor. D.L.C. 38

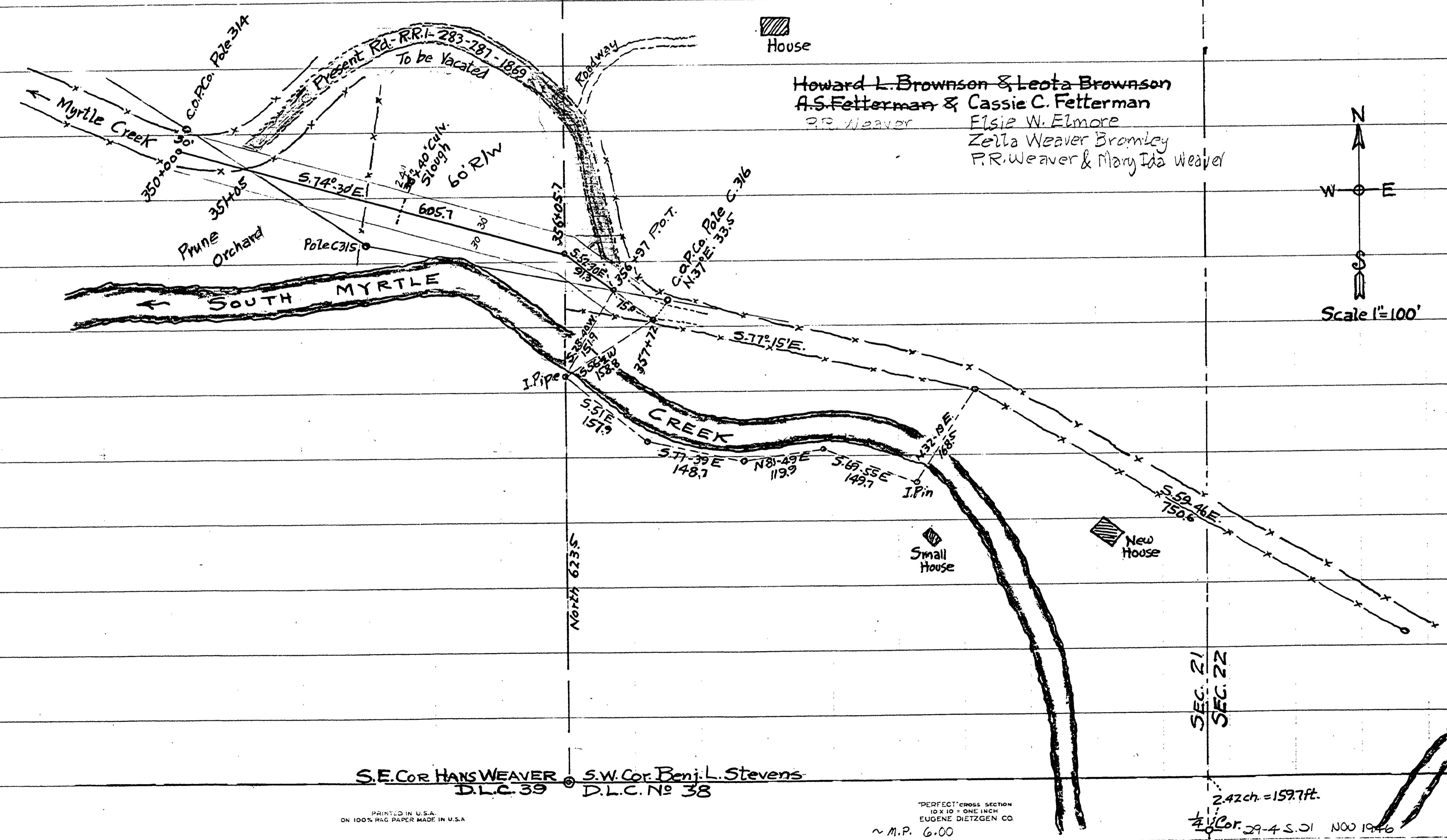
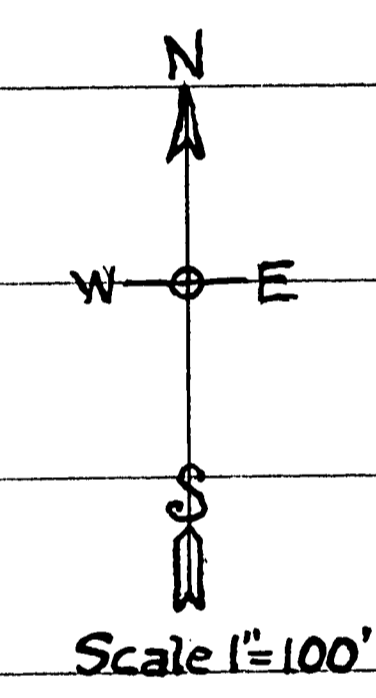
CHANGE IN S. MYRTLE RD. 18
N.E. 1/4 SEC. 21 - T. 29 S. - R. 4 W. - W.M.
F.C. Frear Co. Rd. mstr.
Nov. 1946

Howard L. & Leota Brownson

Oliver I. Greene

House

Howard L. Brownson & Leota Brownson
A.S. Fetterman & Cassie C. Fetterman
P.R. Weaver
Elsie W. Elmore
Zella Weaver Bromley
P.R. Weaver & Mary Ida Weaver



S.E. Cor. Hans Weaver D.L.C. 39
S.W. Cor. Benj. L. Stevens D.L.C. No 38

PERFECT CROSS SECTION
10 X 10 - ONE INCH
EUGENE DIETZGEN CO.

PRINTED IN U.S.A.
ON 100% RAG PAPER MADE IN U.S.A.

PERFECT CROSS SECTION
10 X 10 - ONE INCH
EUGENE DIETZGEN CO.
~ M.P. 6.00

2.42 ch. = 159.7 ft.
1/4 Cor. 29-4 S. 31 N 00 1946

PRINTED IN U.S.A.
ON 100% RAG PAPER MADE

0600 0600

(5)