

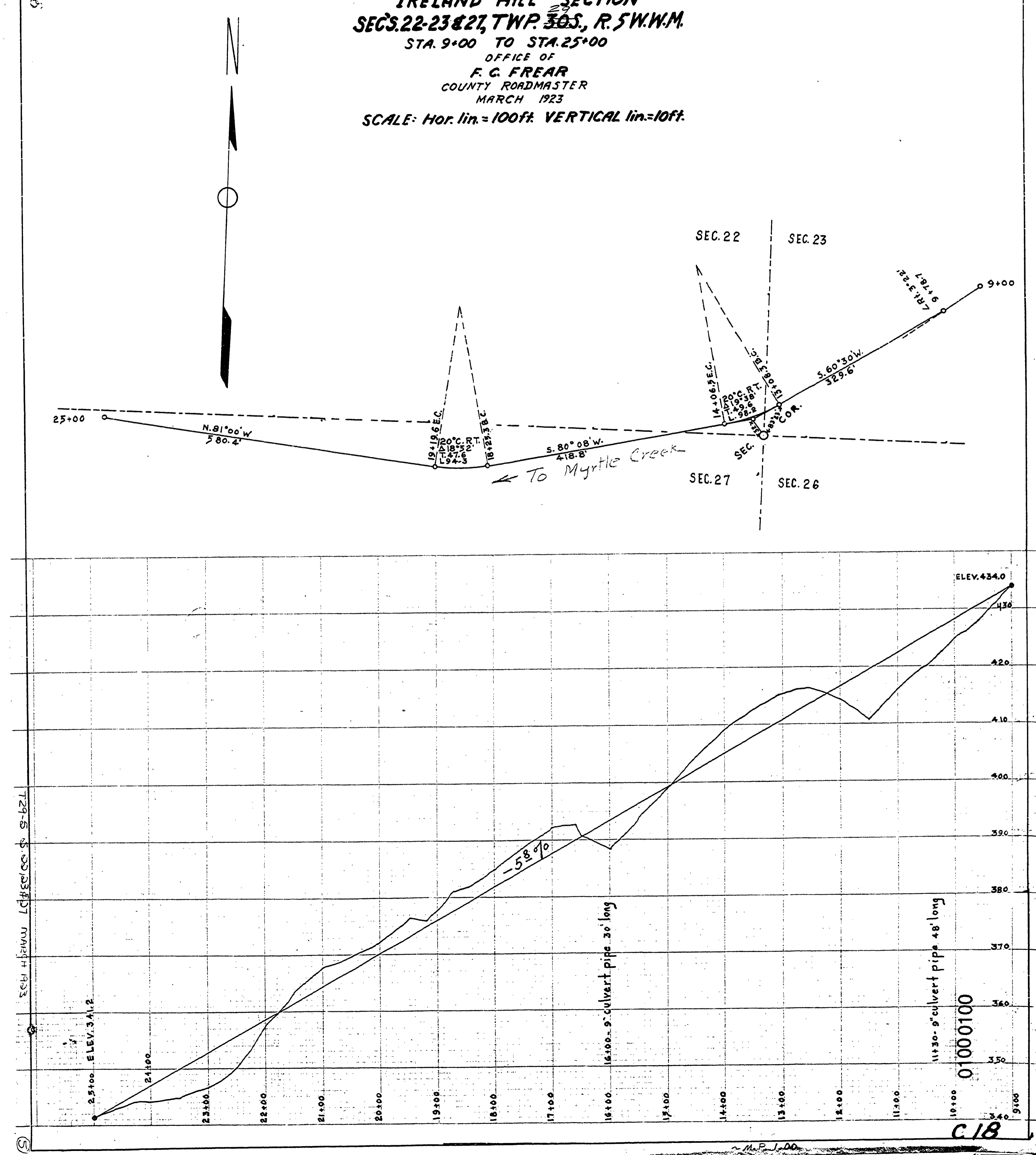
**DOUGLAS COUNTY HIGHWAY
IMPROVEMENT**

PROFILE AND ALIGNMENT
MYRTLE CREEK - NUGGET ROAD
IRELAND HILL SECTION
SECS. 22-23 & 27, TWP. 30S., R. 5W.W.M.

STA. 9+00 TO STA. 25+00

OFFICE OF
F. C. FREAR
COUNTY ROADMASTER
MARCH 1923

SCALE: Hor. lin. = 100ft. VERTICAL lin. = 10ft.



T29-S-3033#17 MAR 1923

C. 18

M. P. J. D.