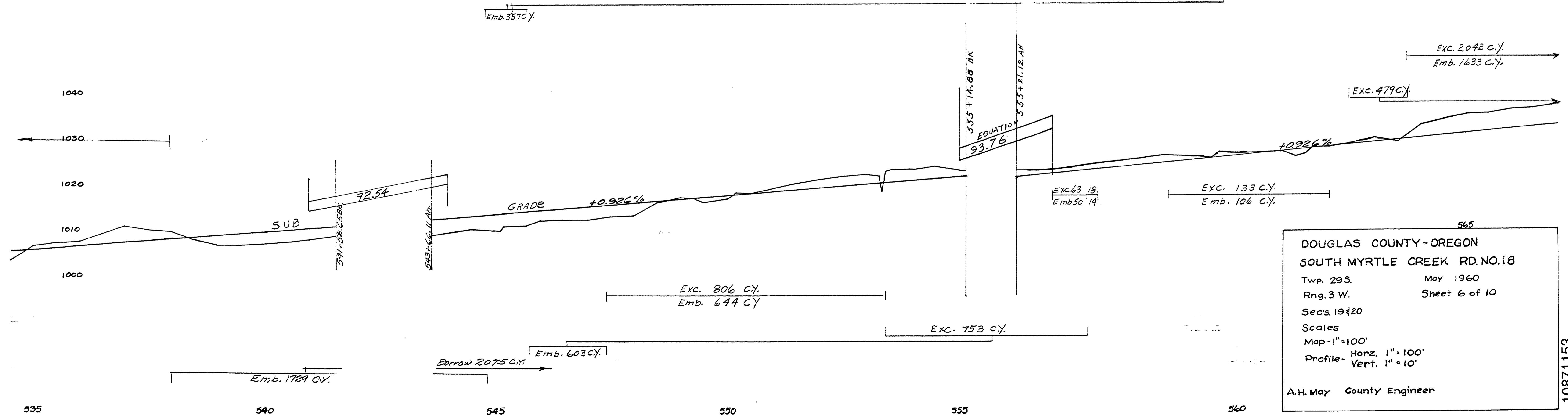
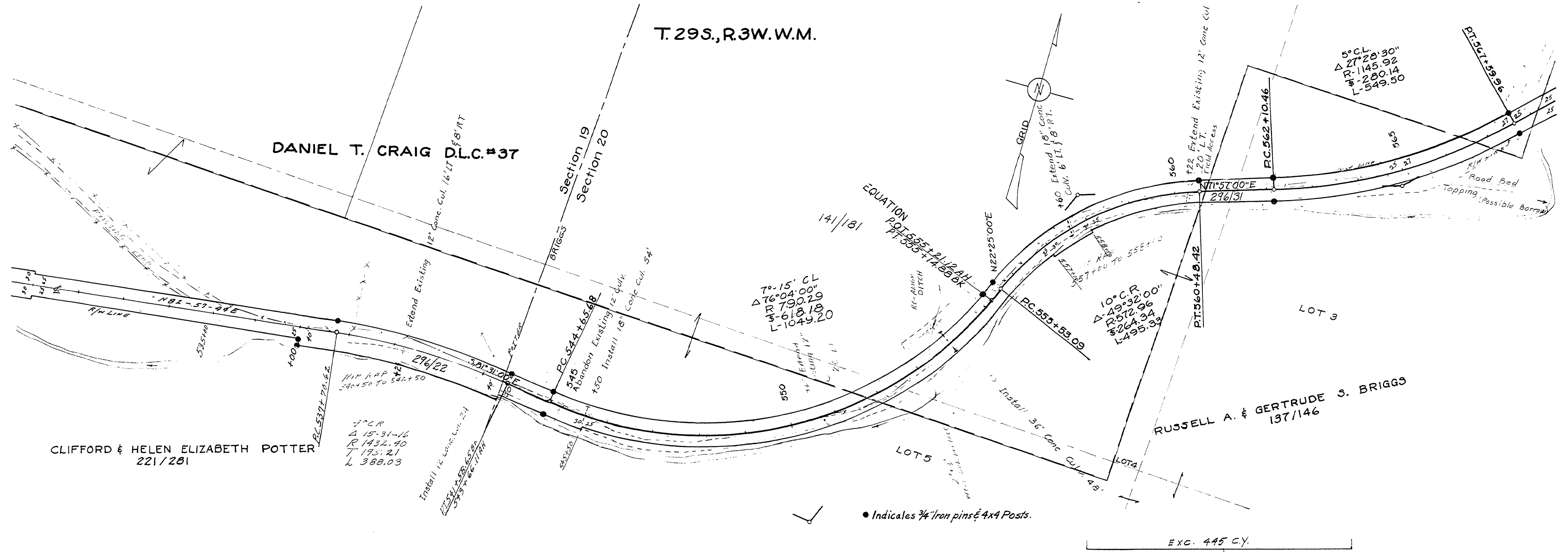


T. 29S., R. 3W. W.M.

DANIEL T. CRAIG D.L.C.#37



DOUGLAS COUNTY-OREGON
 SOUTH MYRTLE CREEK RD. NO. 18
 Twp. 29S. May 1960
 Rng. 3 W. Sheet 6 of 10
 Secs. 19 & 20
 Scales
 Map-1"=100'
 Profile- Horiz. 1"=100'
 Vert. 1"=10'
 A.H. May County Engineer

10871153