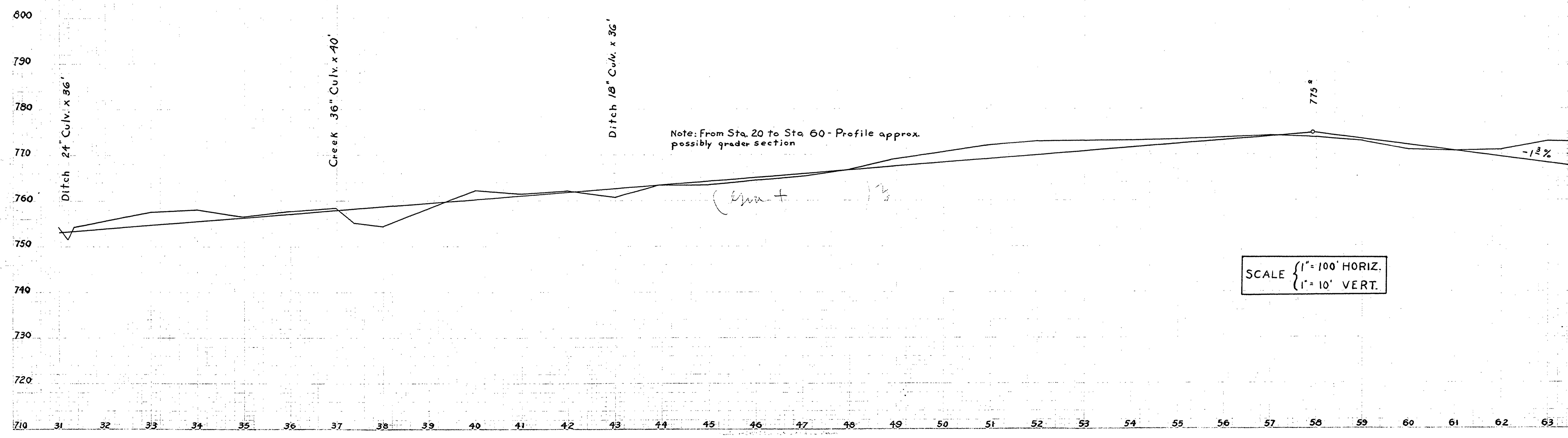
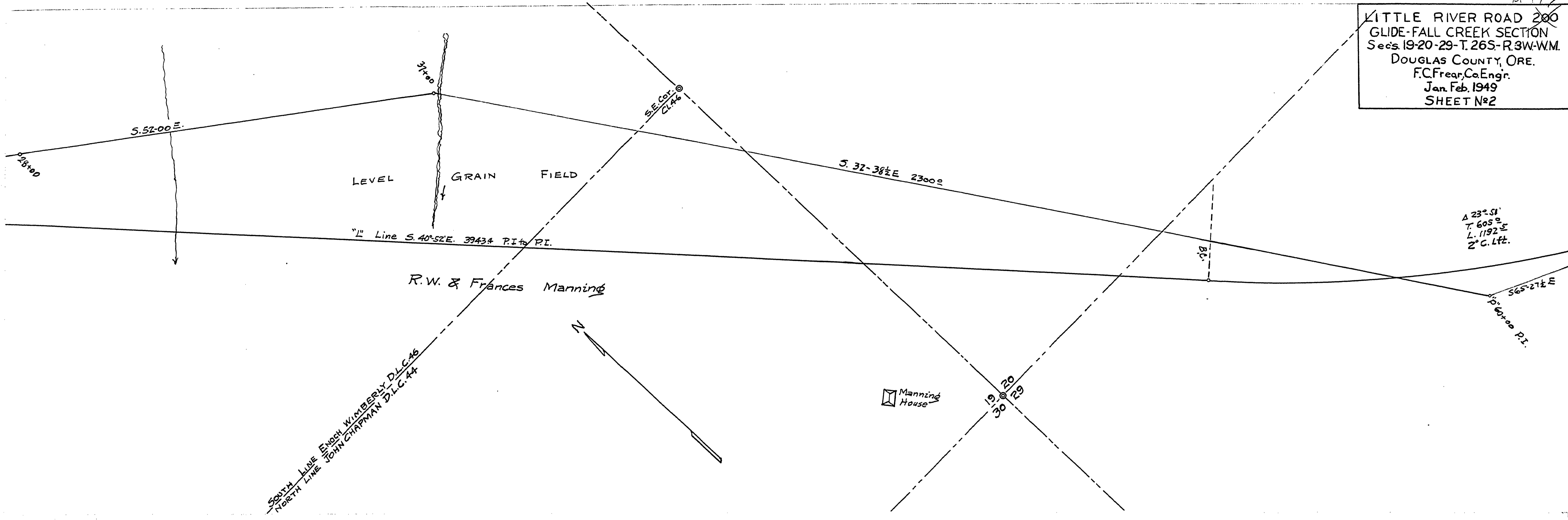


10/20/83
 LITTLE RIVER ROAD 200
 GLIDE-FALL CREEK SECTION
 Secs. 19-20-29-T. 26S-R. 3W-W.M.
 DOUGLAS COUNTY, ORE.
 F.C. Frear, Co. Engr.
 Jan. Feb. 1949
 SHEET No. 2



00300061