

# DOUGLAS COUNTY - OREGON

## PLAN AND PROFILE

OF

*C. R. # 17*  
#17A

### GLIDE-RED BUTTE BRIDGE SECTION

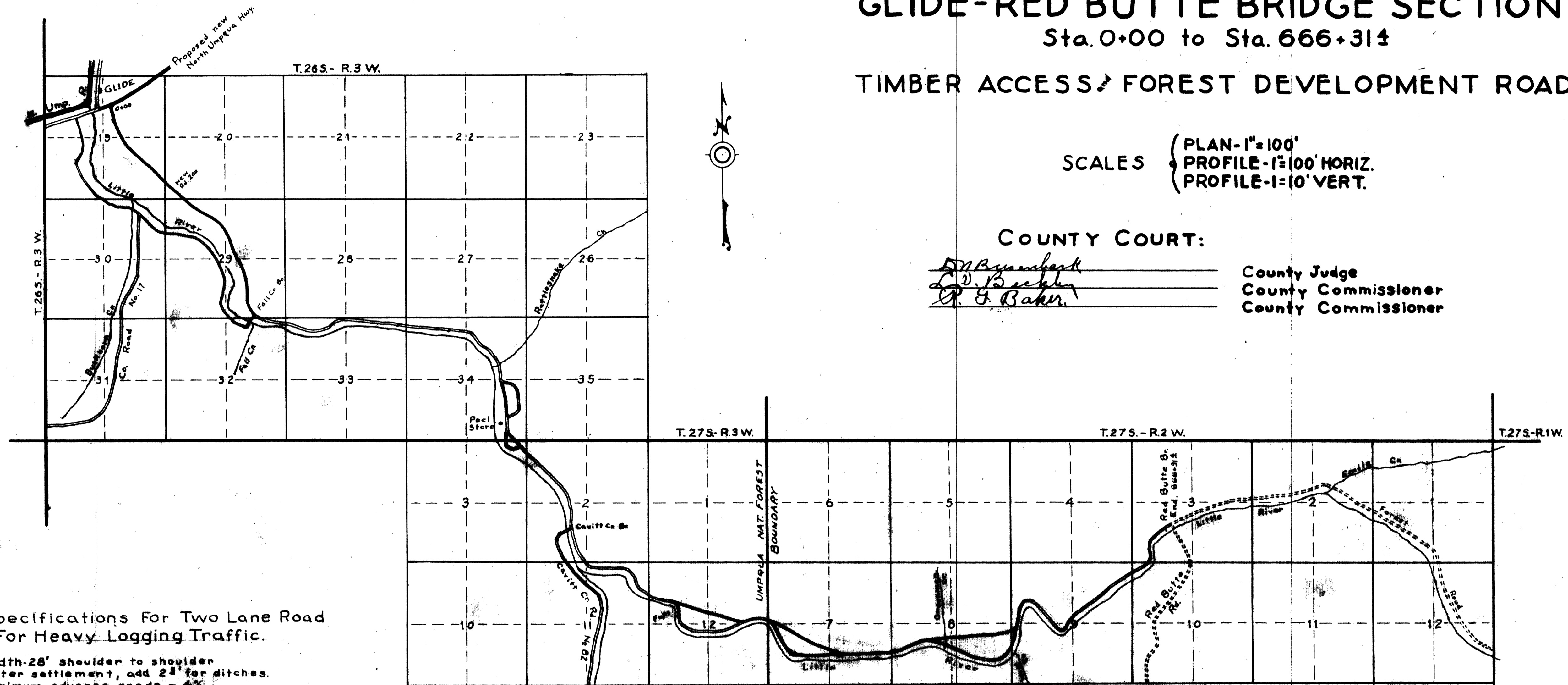
Sta. 0+00 to Sta. 666+314

### TIMBER ACCESS / FOREST DEVELOPMENT ROAD

SCALES { PLAN-1"=100'  
PROFILE-1"=100' HORIZ.  
PROFILE-1"=10' VERT.

COUNTY COURT:

*D. B. Byam* \_\_\_\_\_ County Judge  
*R. J. Baker* \_\_\_\_\_ County Commissioner  
*R. J. Baker* \_\_\_\_\_ County Commissioner



#### Specifications For Two Lane Road For Heavy Logging Traffic.

Width-28' shoulder to shoulder  
After settlement, add 2" for ditches.  
Maximum adverse grade - 4%  
Minimum curve - 20% - 204' radius  
Quantities as to yardage approx.  
Existing County Roads  
Forest Roads  
New Road Sections  
Bearings State Hwy Survey  
Elevation: U.S.G.S. B.M.  
Distance from North Umpqua Hwy to Red Butte Bridge by present road - 13 1/2 miles.  
New Survey - 12 1/2 miles.

SKETCH MAP  
SCALE: 2" = 1 MILE

