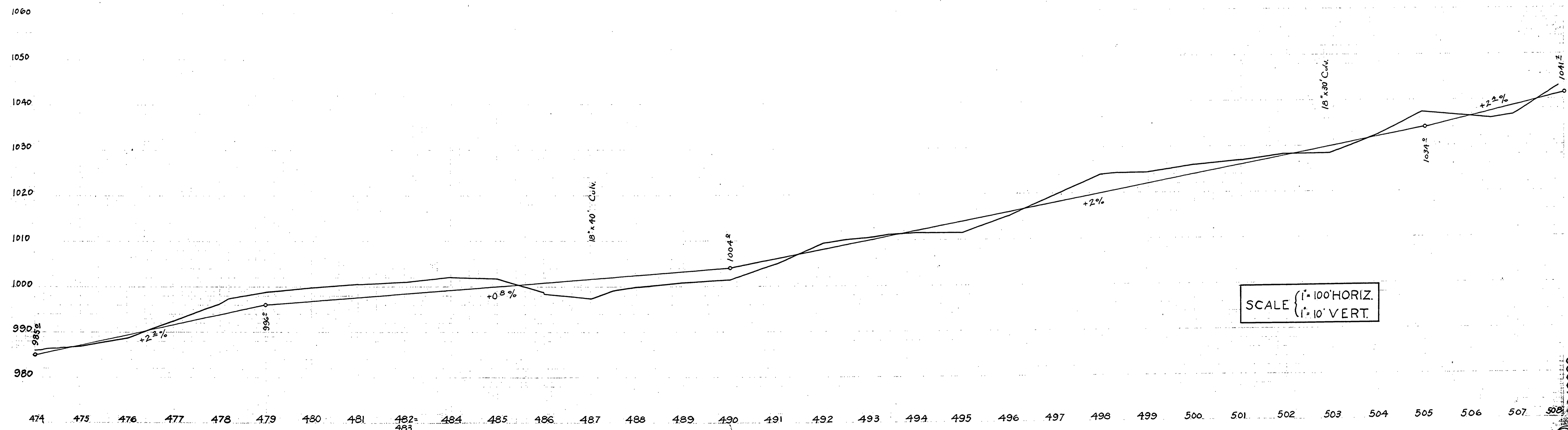
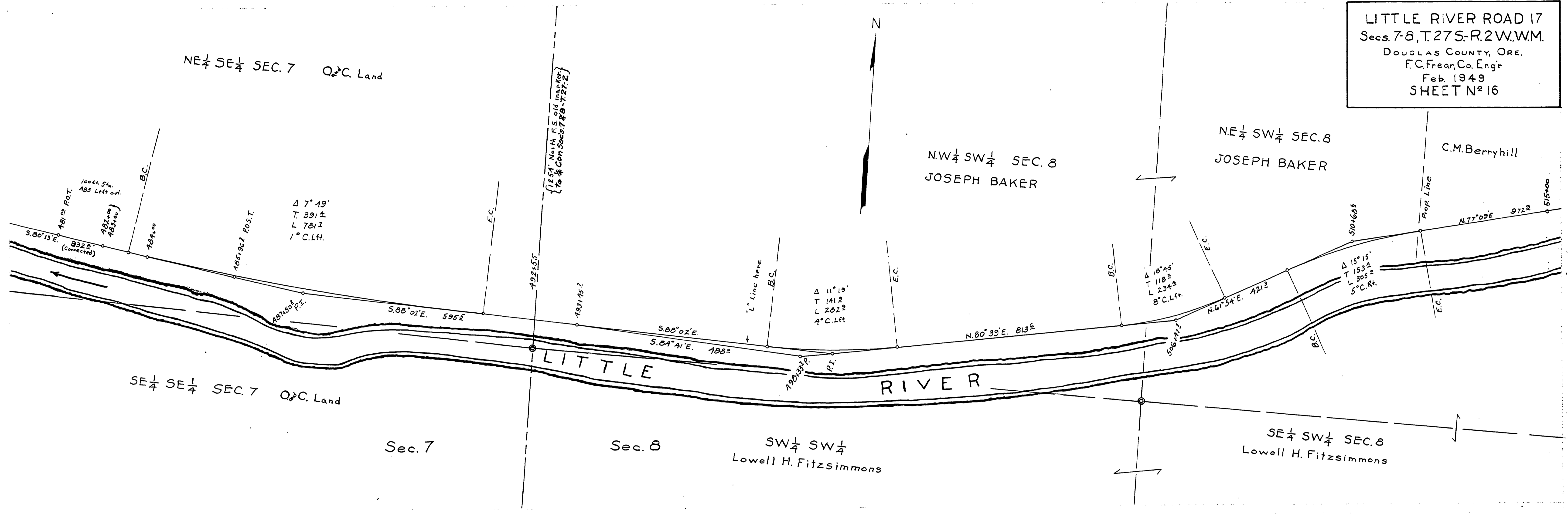


LITTLE RIVER ROAD 17
 Secs. 7-8, T.27S.-R.2W.W.M.
 DOUGLAS COUNTY, ORE.
 F.C. Frear, Co. Engr
 Feb. 1949
 SHEET N^o 16



SCALE { 1" = 100' HORIZ.
 1" = 10' VERT.

19642023