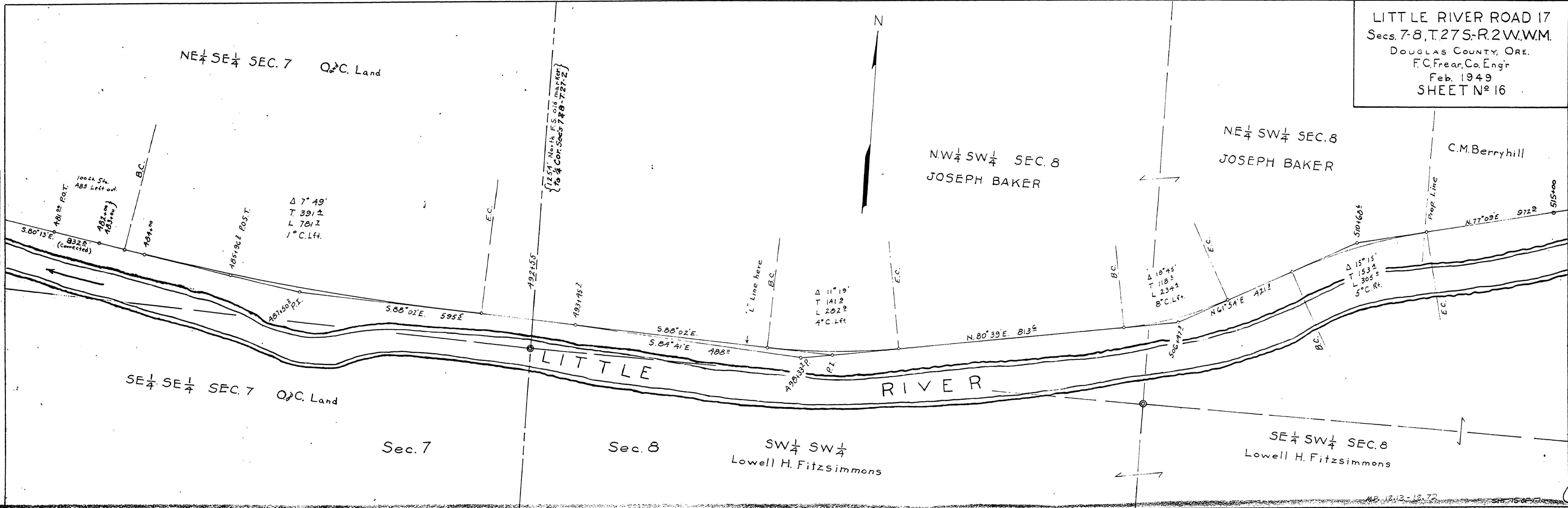


LITTLE RIVER ROAD 17
 Secs. 7-8, T.27S.-R.2W., W.M.
 DOUGLAS COUNTY, ORE.
 F.C. Frear, Co. Engr.
 Feb. 1949
 SHEET N^o 16



FINAL	DATE
SURVEY	BY
PLOTTED	
TEMPLATE	
NOTE BOOK	
AREAS CHECKED	
NO.	

24 X

