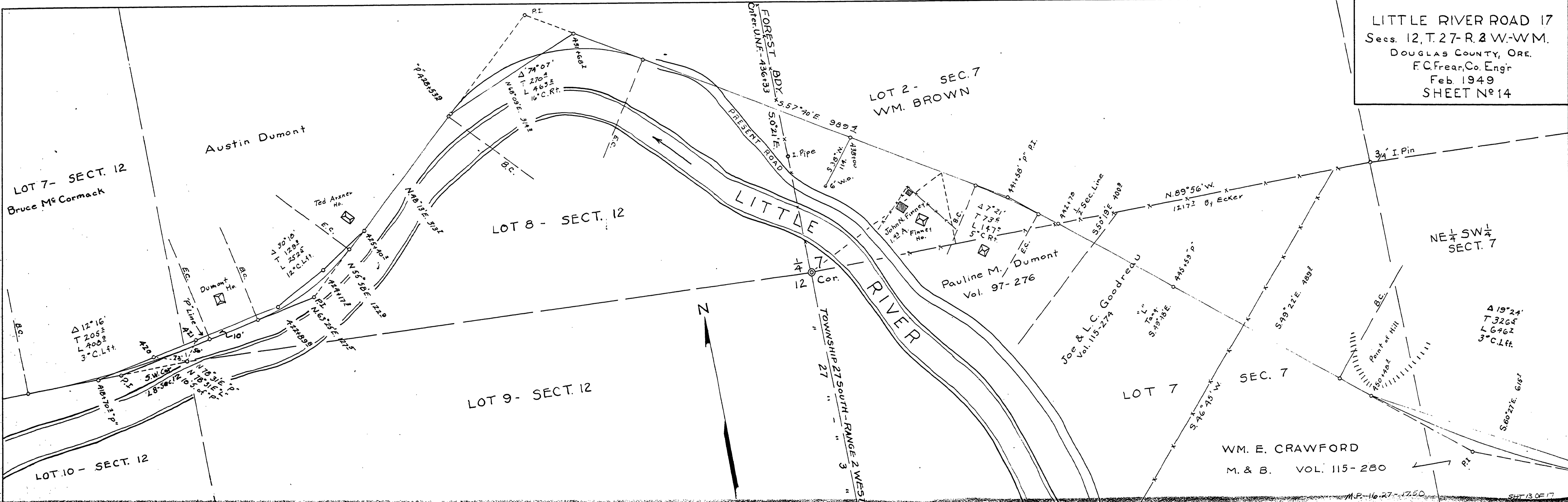


LITTLE RIVER ROAD 17
 Secs. 12, T. 27-R. 2 W.-WM.
 DOUGLAS COUNTY, ORE.
 F. C. Frear, Co. Engr
 Feb 1949
 SHEET No 14

DATE	
BY	
FINAL SURVEYED	
SURVEY	
NOTE BOOK	
AREAS CHECKED	
NO.	



24 X

16271750