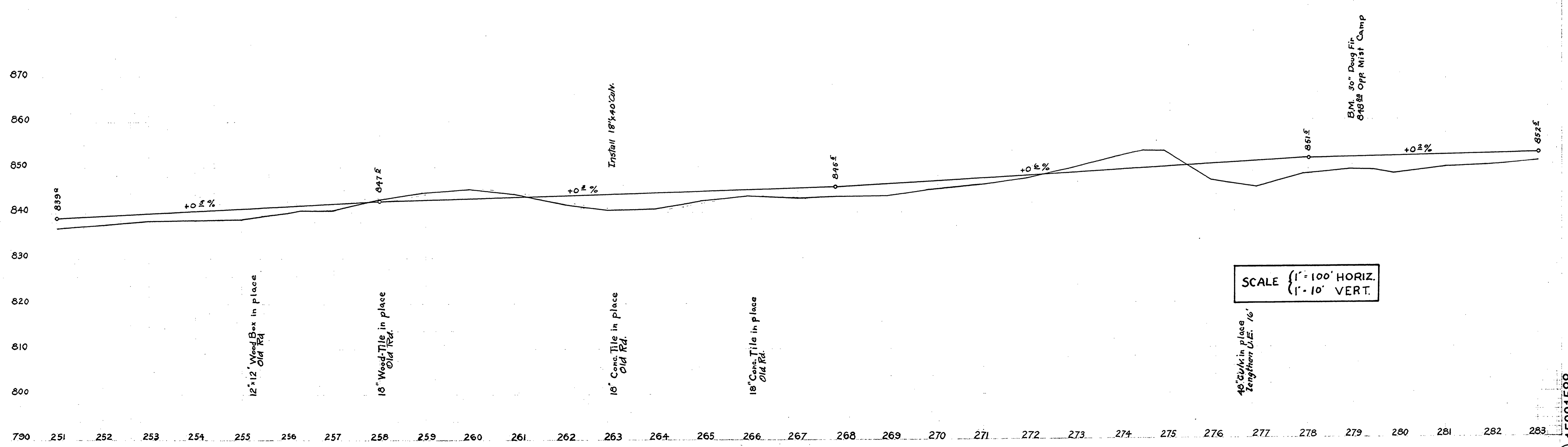
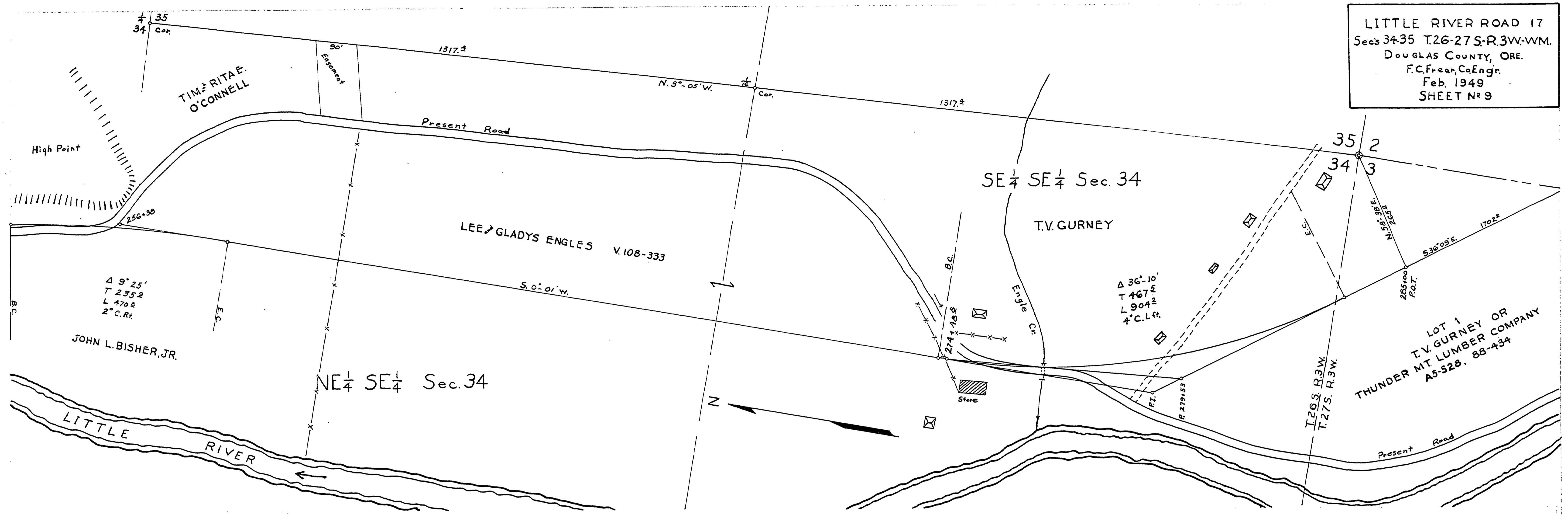


LITTLE RIVER ROAD 17
 Secs 34-35 T.26-27S-R.3W-WM.
 DOUGLAS COUNTY, ORE.
 F.C. Frear, Co. Engr.
 Feb. 1949
 SHEET No 9



SCALE { 1" = 100' HORIZ.
 1" = 10' VERT.

15331588