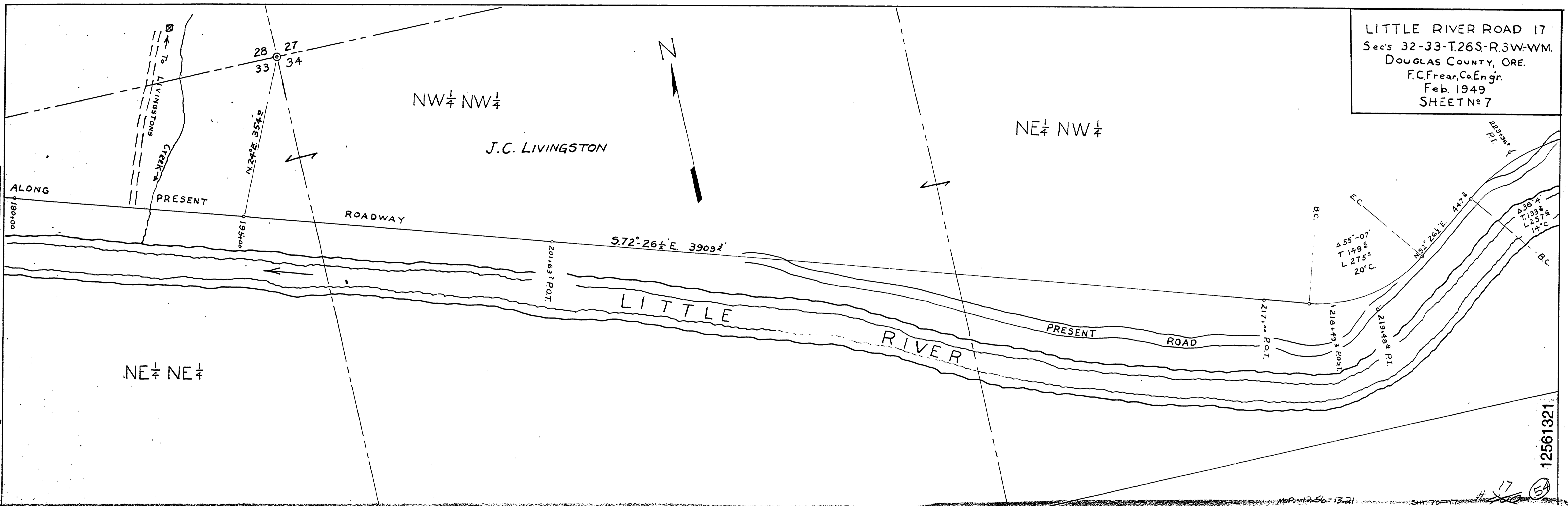


LITTLE RIVER ROAD 17
 Secs 32-33-T.26S-R.3W-WM.
 DOUGLAS COUNTY, ORE.
 F.C. Frear, Co. Engr.
 Feb. 1949
 SHEET NO. 7

DATE	
BY	
FINAL SURVEY	
NOTE BOOK	
NO.	
AREAS CHECKED	



24 X

