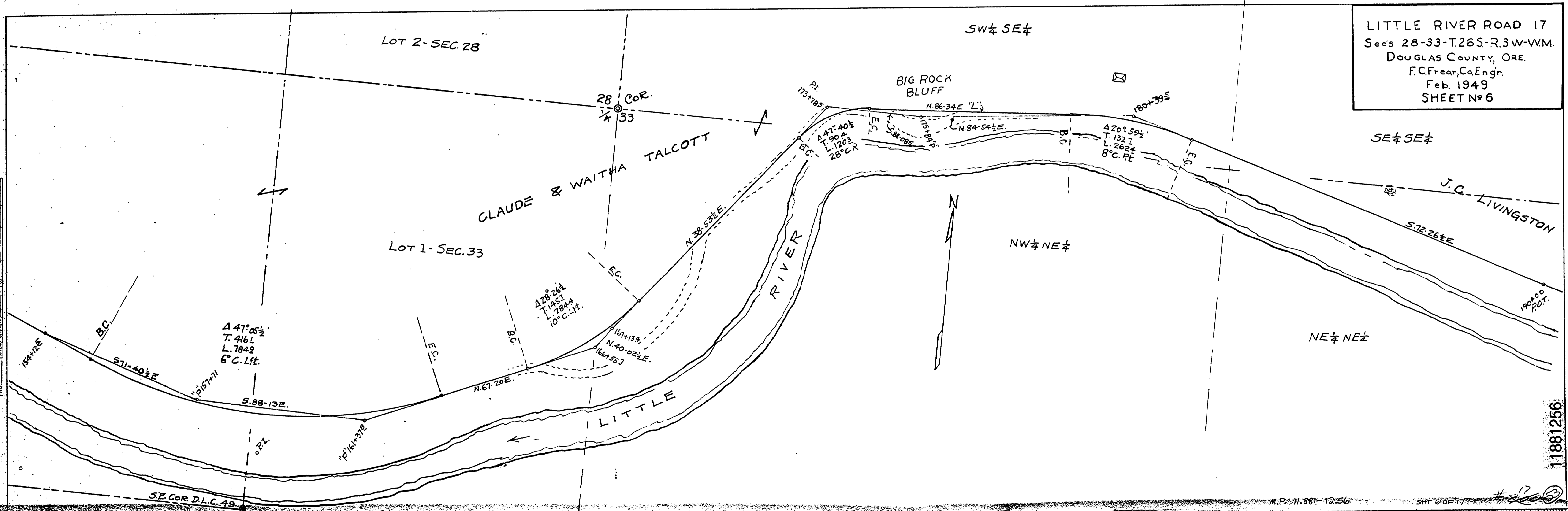
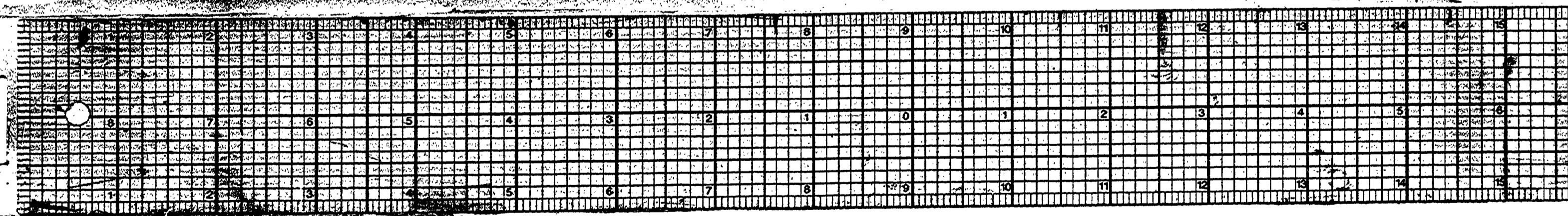


FINAL SURVEY	DATE
SURVEYED	BY
PLOTTED	BY
RECALCULATED	BY
NOTE BOOK	NO.
AREAS CHECKED	



LITTLE RIVER ROAD 17
 Secs 28-33-T.26S-R.3W-WM.
 DOUGLAS COUNTY, ORE.
 F.C. Frear, Co. Engr.
 Feb. 1949
 SHEET No 6

24 X



11881256