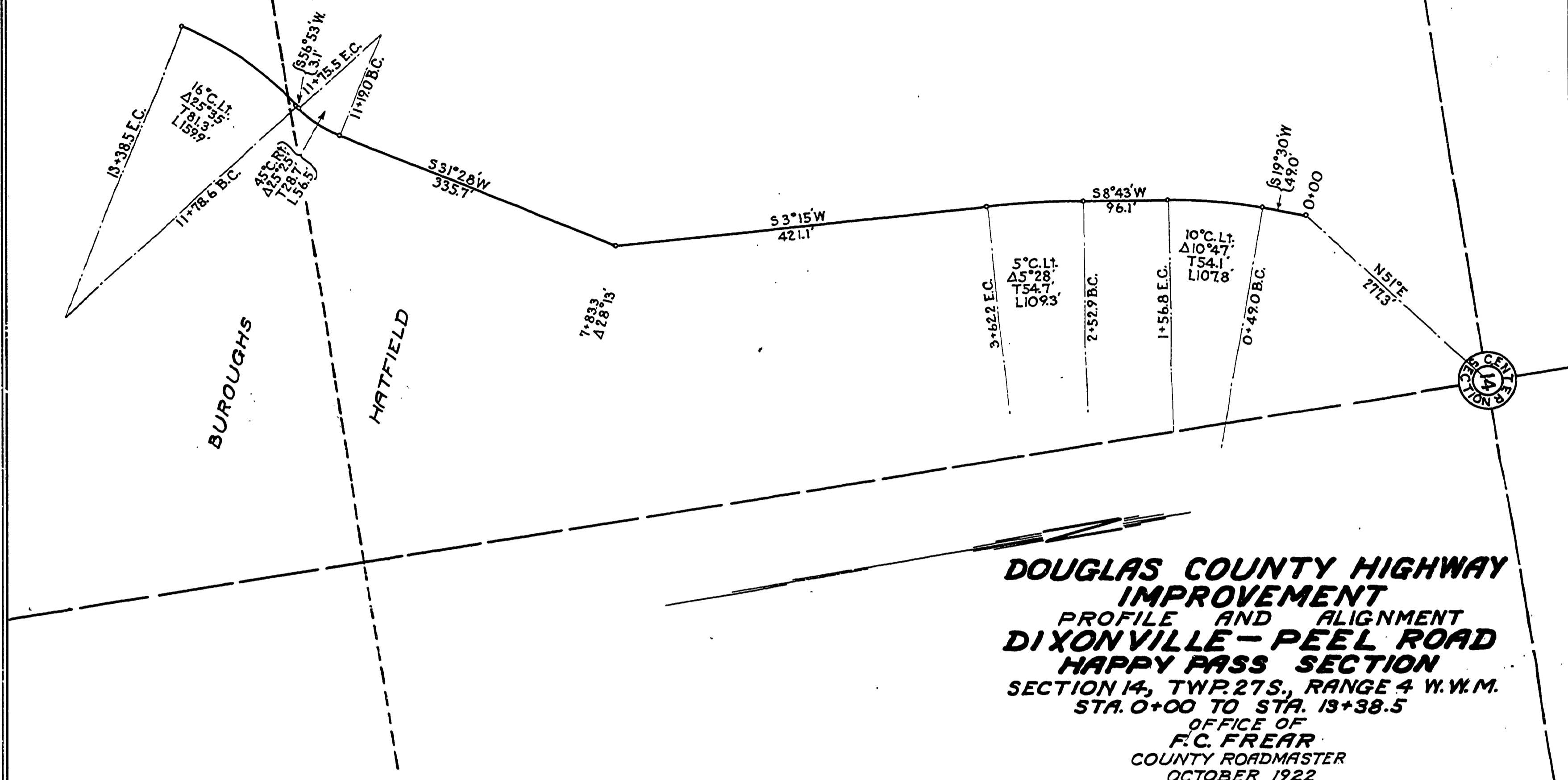
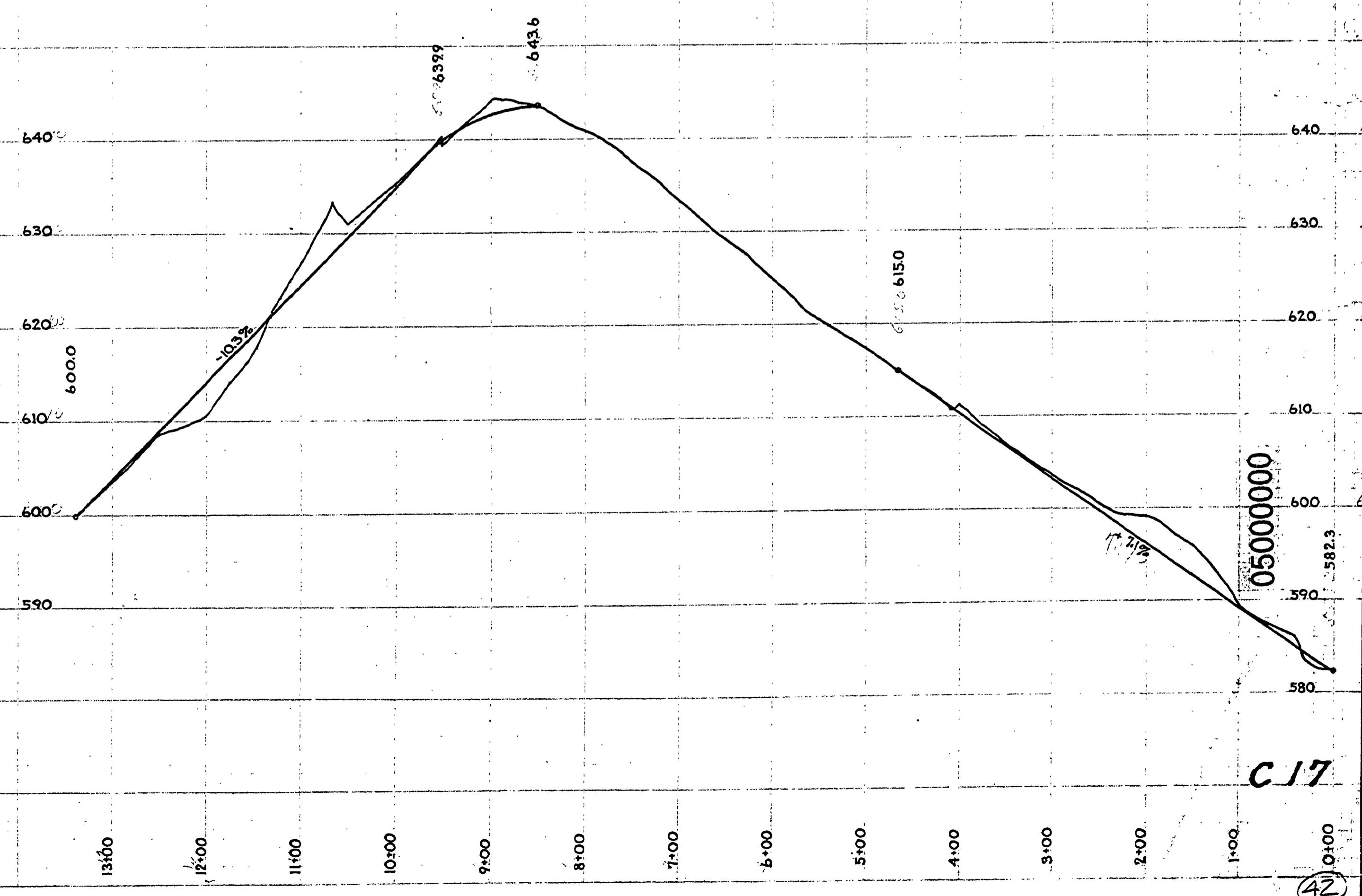
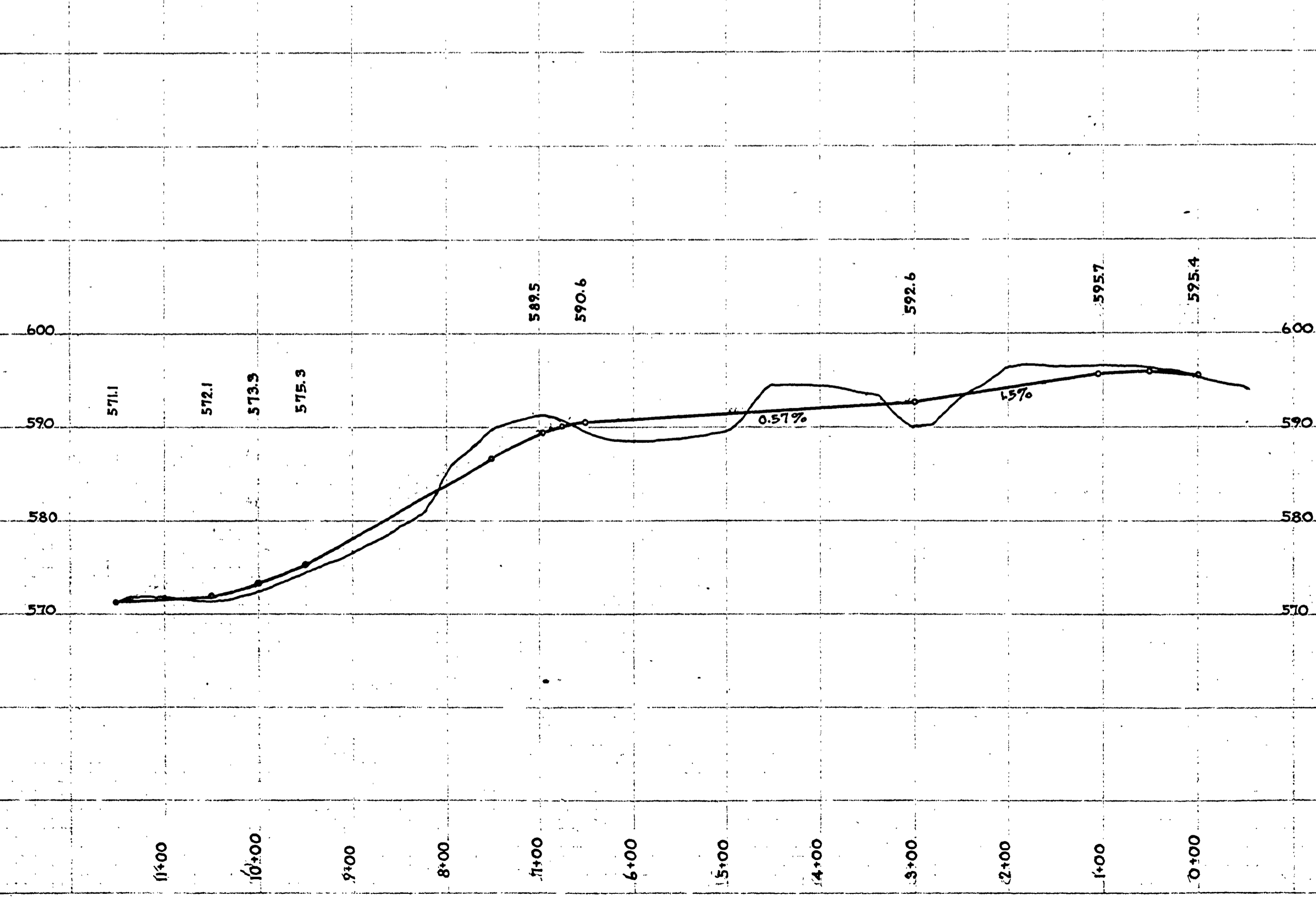


**DOUGLAS COUNTY HIGHWAY
IMPROVEMENT
PROFILE AND ALIGNMENT
DIXONVILLE-PEEL ROAD
ROYCE SECTION**
SECTION TWP 27S, RANGE 4 W.W.M.
STA. 0+00 TO STA. 11+50
OFFICE OF
F. C. FREAR
COUNTY ROADMASTER
OCTOBER 1922
SCALE 1 in. = 100 ft.



**DOUGLAS COUNTY HIGHWAY
IMPROVEMENT
PROFILE AND ALIGNMENT
DIXONVILLE-PEEL ROAD
HAPPY PASS SECTION**
SECTION 14, TWP 27S, RANGE 4 W.W.M.
STA. 0+00 TO STA. 13+38.5
OFFICE OF
F. C. FREAR
COUNTY ROADMASTER
OCTOBER 1922
SCALE 1 in. = 100 ft.



C 17

42