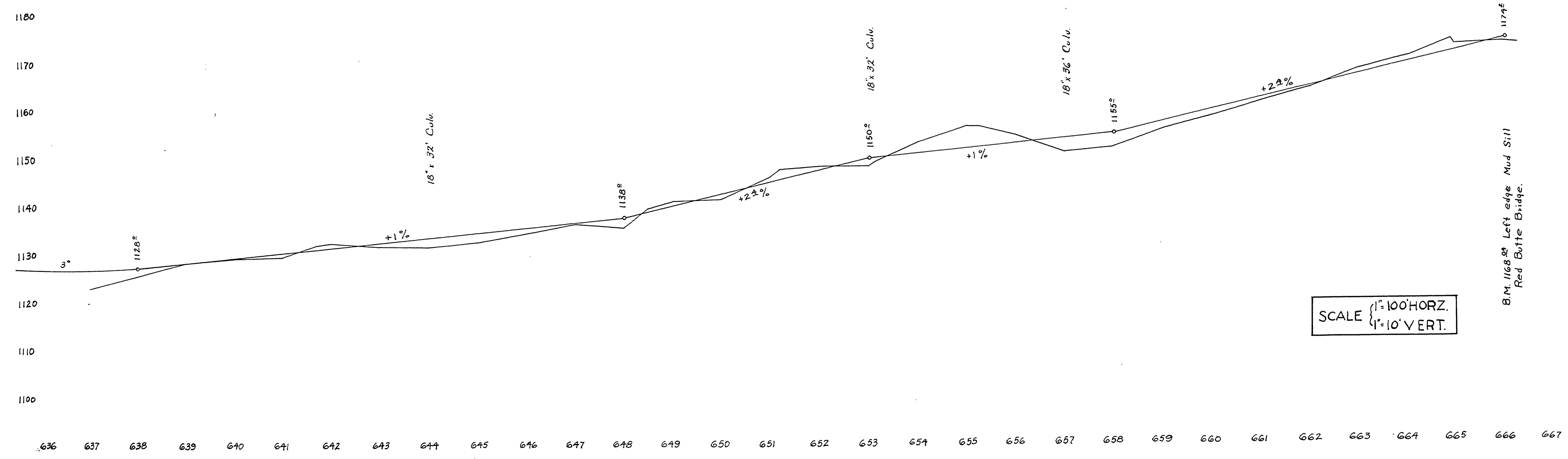
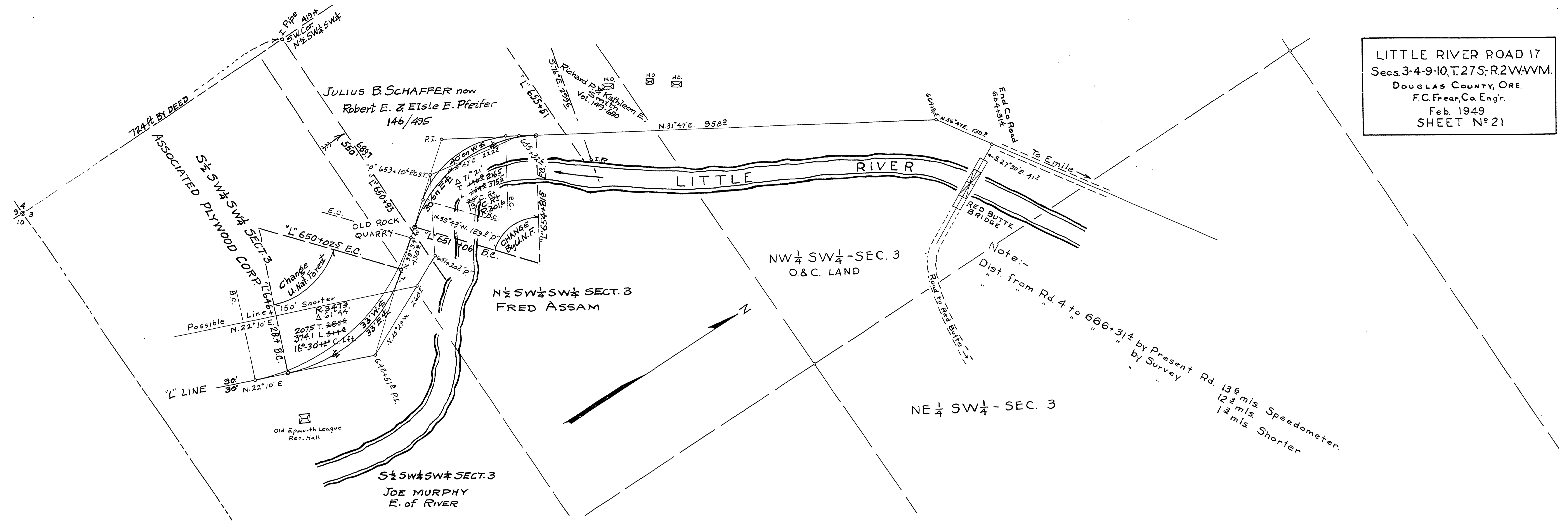


LITTLE RIVER ROAD 17
 Secs. 3-4-9-10, T. 27S-R. 2W-WM.
 DOUGLAS COUNTY, ORE.
 F.C. Frear, Co. Engr.
 Feb. 1949
 SHEET N° 21



SCALE { 1" = 100' HORZ.
 1" = 10' VERT.

APPX. H.F. 26.61 - 26.95

27 # 17

26612695

