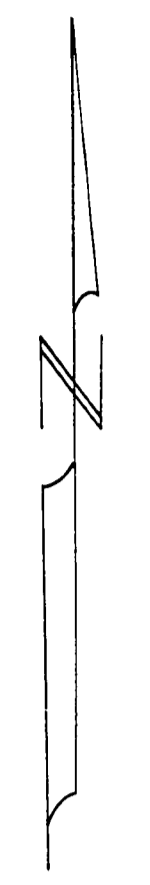
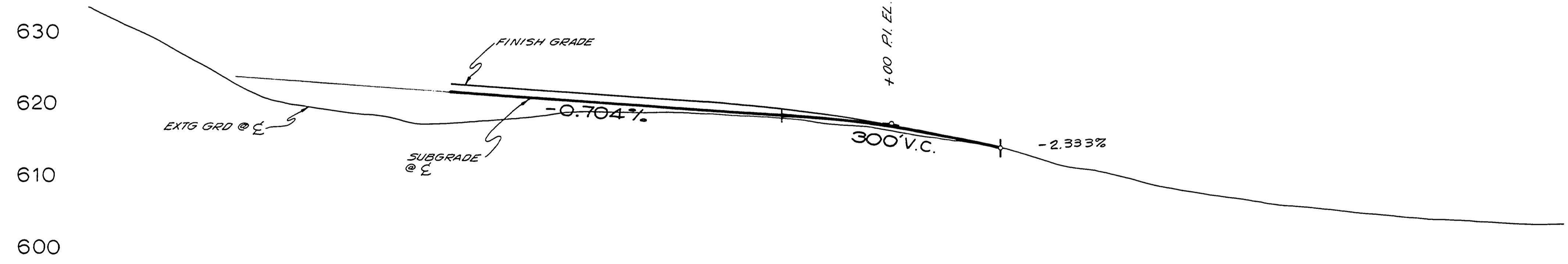
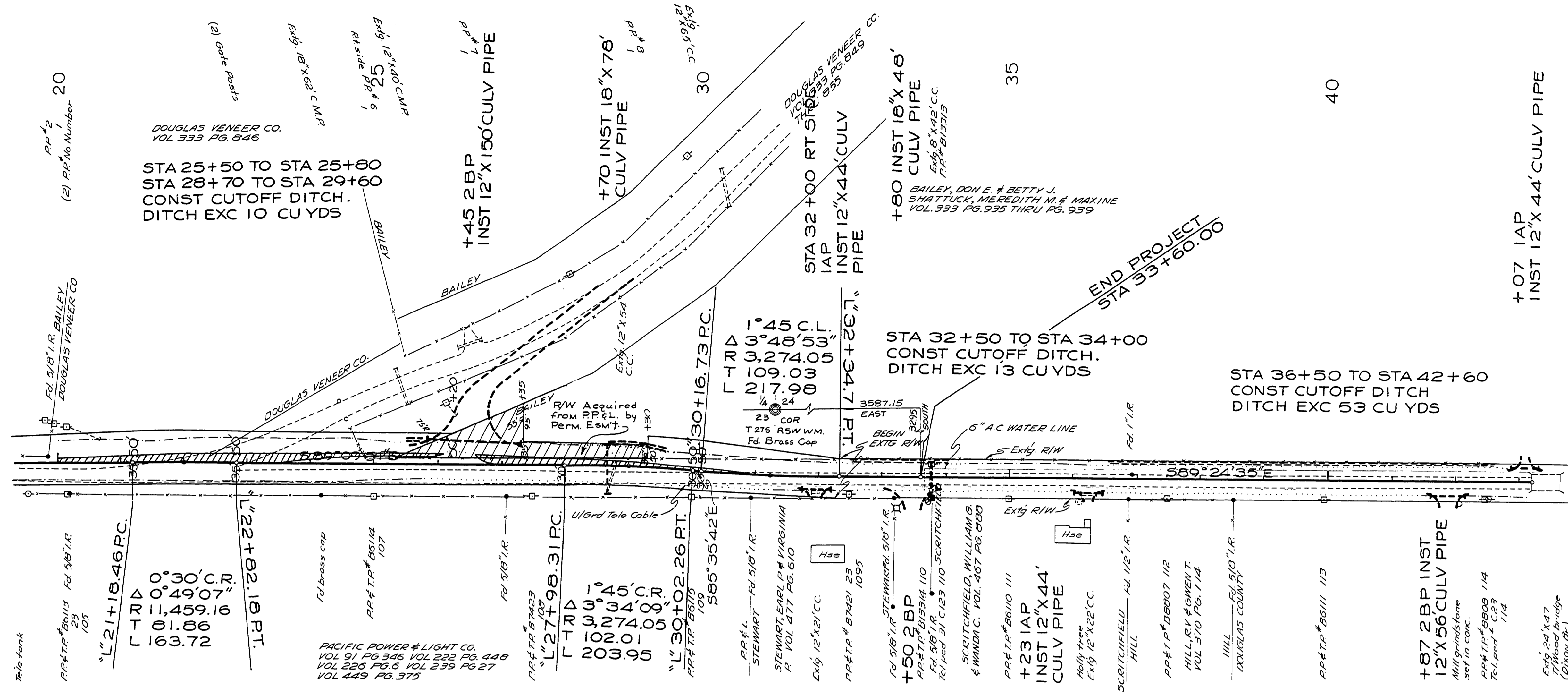


SEC 24 T27S R5W W.M.



DOUGLAS COUNTY
VOL 298 PG 553
THRU PG 555

002900063

DOUGLAS COUNTY ROAD DEPT
LITTLE RIVER ROAD NO. 17
1972 SHY 7
GEORGE E. GRUBB COUNTY ENGR.

Rd = 17 1972 SHY 7 (76)

M.P. 0.29-0.63

