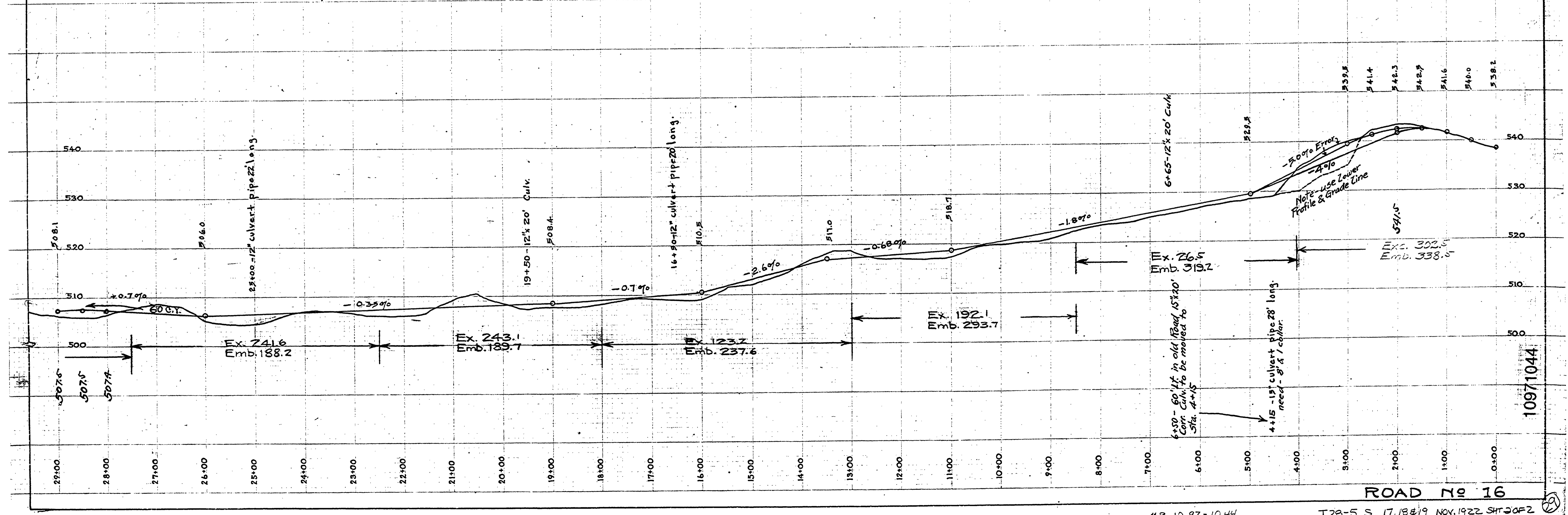


**DOUGLAS COUNTY HIGHWAY IMPROVEMENT**  
**PROFILE AND ALIGNMENT**  
**DIXONVILLE-CARNES ROAD**  
**WHITSETT SECTION**  
**SHEET NO. 1**  
 SECTIONS 19, 17, & 18, TWP 28S, RANGE 5 W.W.M.  
 STA. 0+00 TO STA. 55+49.9  
 OFFICE OF  
**F.C. FREAR**  
 COUNTY ROADMASTER  
 NOVEMBER 1922  
 SCALE 1 in. = 100 ft.



ROAD No 16

~MP 10.97-10.44

T28-S. 17, 18 & 19 NOV. 1922 SH. 20F2

10971044