

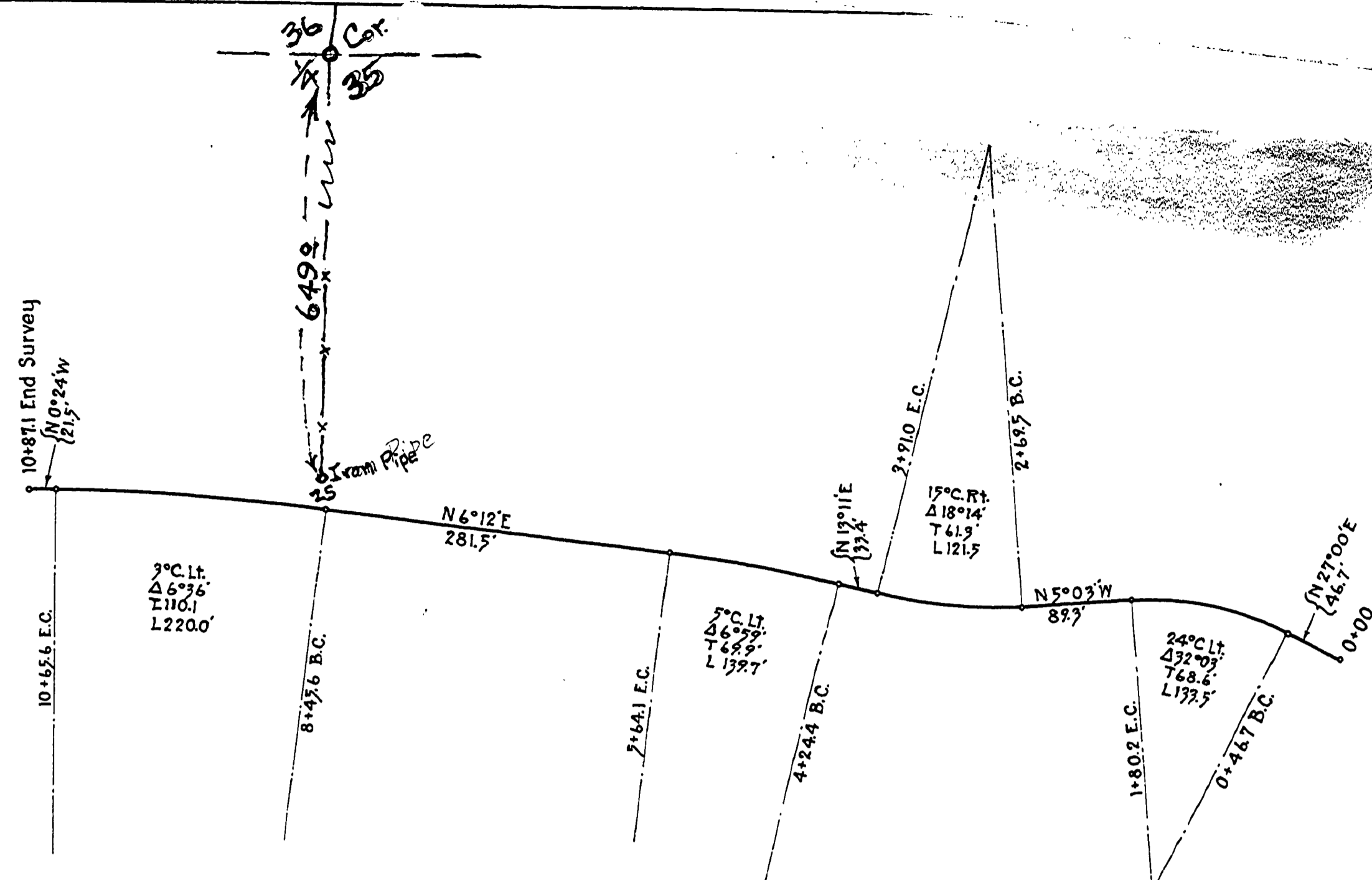
DOUGLAS COUNTY HIGHWAY IMPROVEMENT

PROFILE AND ALIGNMENT
DIXONVILLE CARNES ROAD
 McLAUGHLIN HILL SECTION

SECTIONS 26 & 35, TWP. 27S, RANGE 5 W.W.M.
 STA. 0+00 TO STA. 13+57.6

OFFICE OF
F. C. FREAR
 COUNTY ROADMASTER
 MAY 1922

SCALE: HOR. 1 in. = 100 ft. VERTICAL 1 in. = 10 ft.



DOUGLAS COUNTY HIGHWAY IMPROVEMENT

PROFILE AND ALIGNMENT
DIXONVILLE - CARNES ROAD
 HUNTER SECTION

SECTION 35, TWP. 27S, RANGE 5 W.W.M.
 STA. 0+00 TO STA. 10+87.1

OFFICE OF
F. C. FREAR
 COUNTY ROADMASTER
 MAY 1922

SCALE: HOR. 1 in. = 100 ft. VERTICAL 1 in. = 10 ft.

