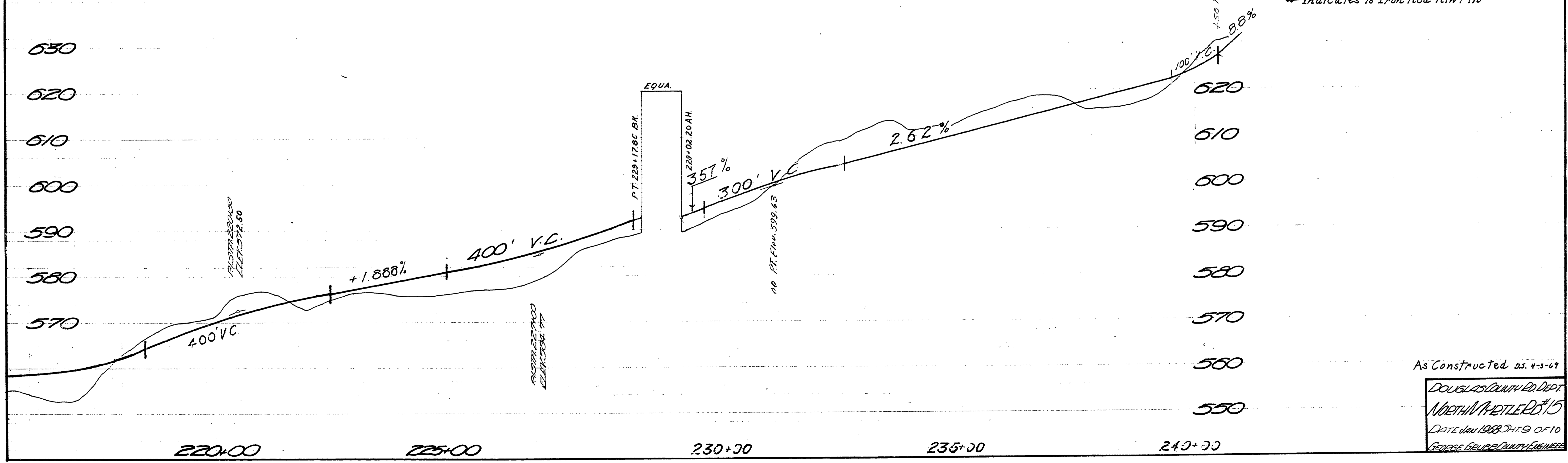
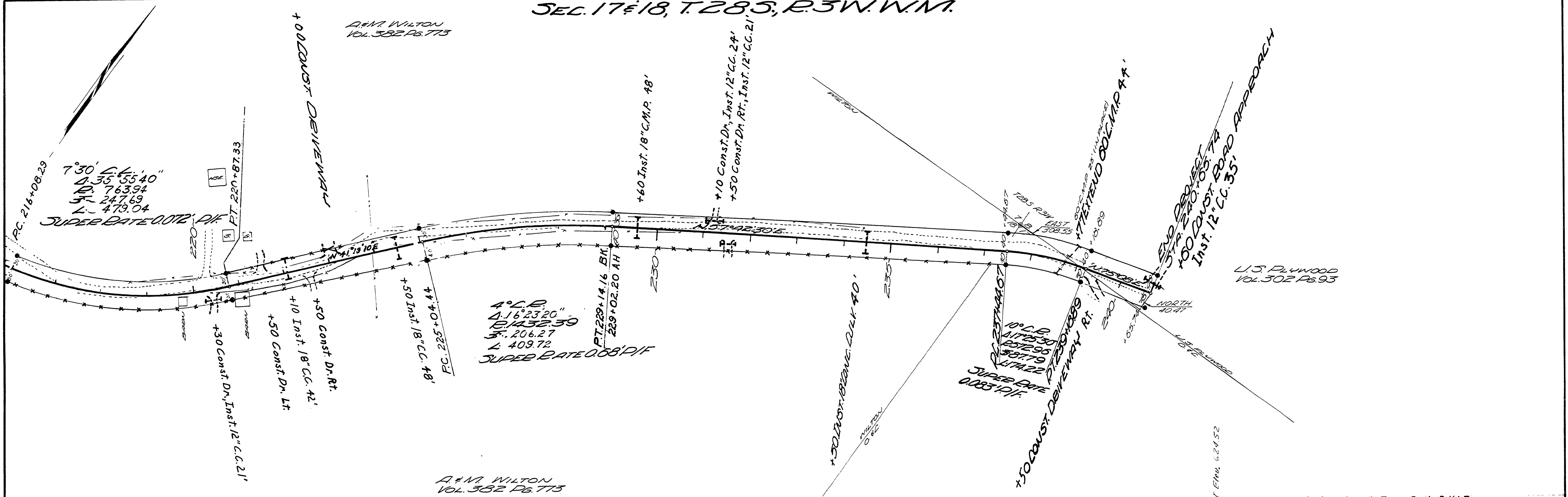


SEC. 17 & 18, T. 28 S., R. 3 W. W.M.

A.M. WILTON
VOL. 352 P. 775

U.S. PLYWOOD
VOL. 302 P. 93

A.M. WILTON
VOL. 352 P. 775



• Indicates 3/8" Iron Rod. R/W Pin

As Constructed ds. 4-3-69

DOUGLAS COUNTY ED. DEPT.
NORTH HARTLE RD #15
DATE Jan 1968 SHEET 9 OF 10
GEORGE DEUBER COUNTY ENGINEER

13791418

M.P. 13.79 - 14.18

JAN 1968
SHEET 9 OF 10