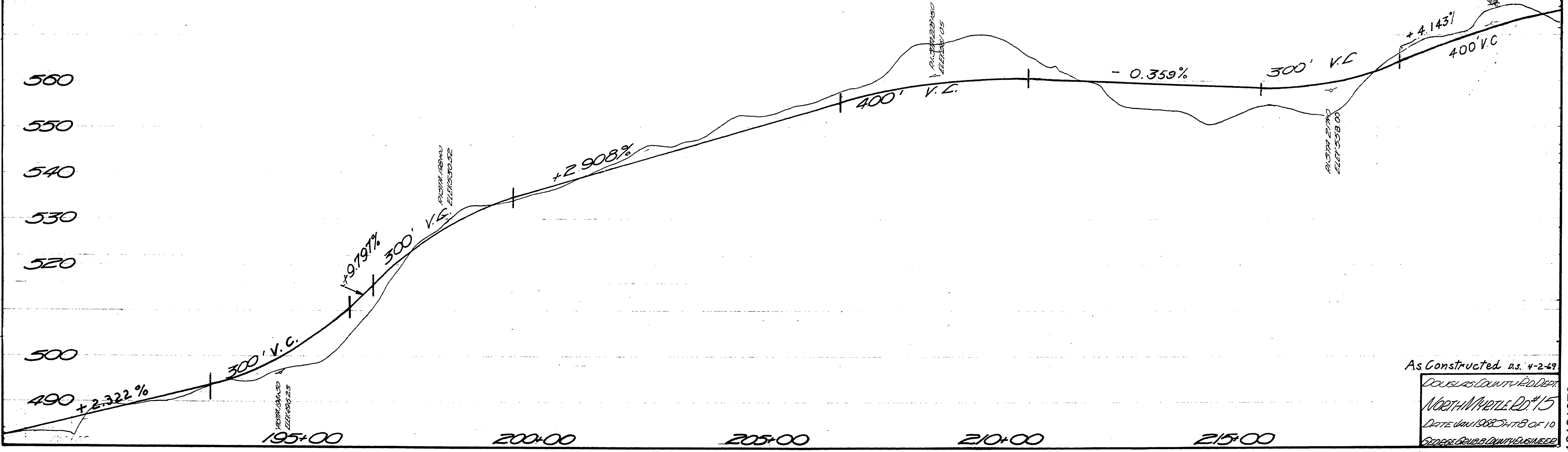
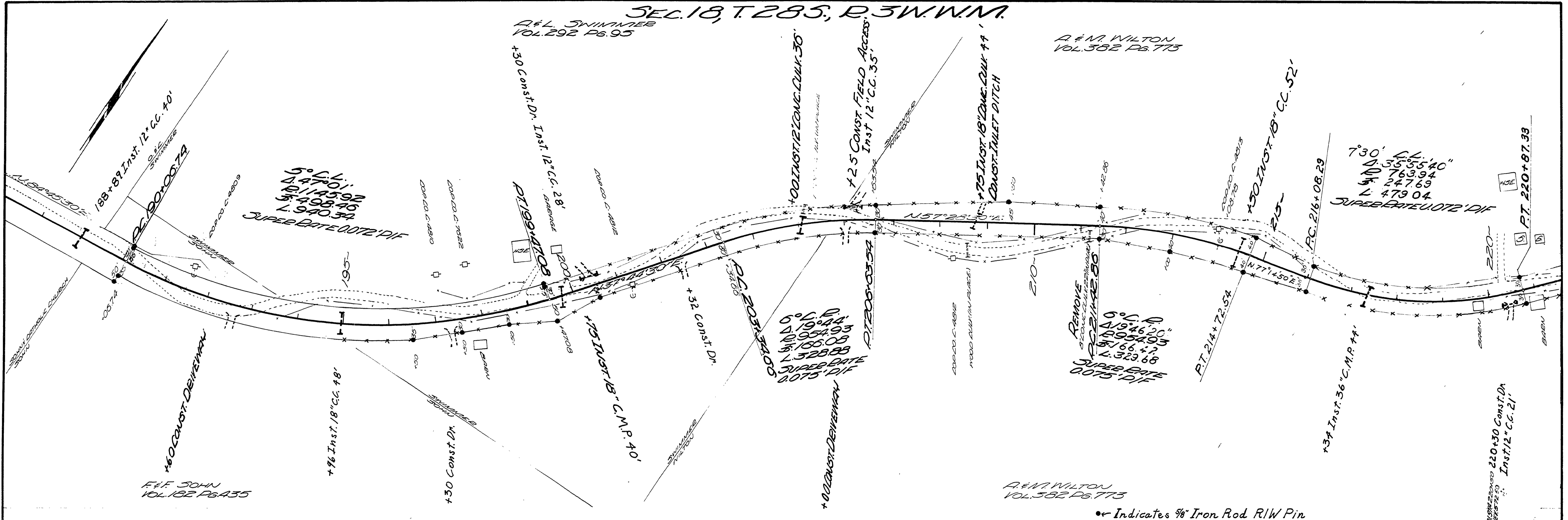


SEC. 18, T. 285, R. 3W. W.M.

D & L SWINNEY
VOL. 292 Pg. 95

D & M WILTON
VOL. 382 Pg. 775



As Constructed u.s. 4-2-49
DOUGLAS COUNTY, IOWA
NORTH MAPLE RD. #15
DATE JAN. 1988 SHTS OF 10
GEORGE DEUBA COUNTY ENGINEER

13181379

M.P. 13.18 - 13.79

Rd. # 15

JAN. 1988
SHE. 8 OF 10 (52)