

DOUGLAS COUNTY OREGON

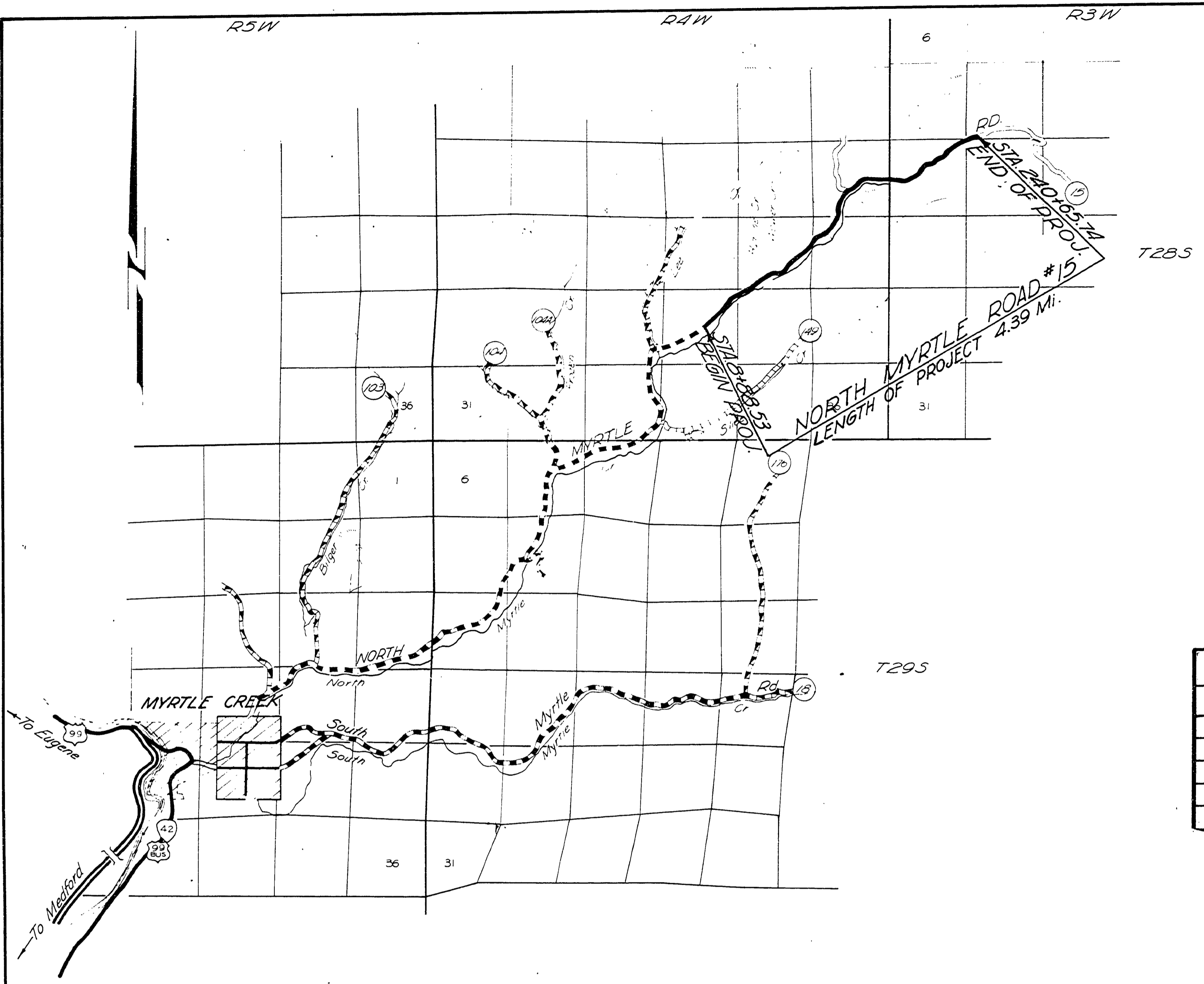
PLANS FOR PROPOSED PROJECT

FURNISH & PLACE MINERAL AGGREGATES

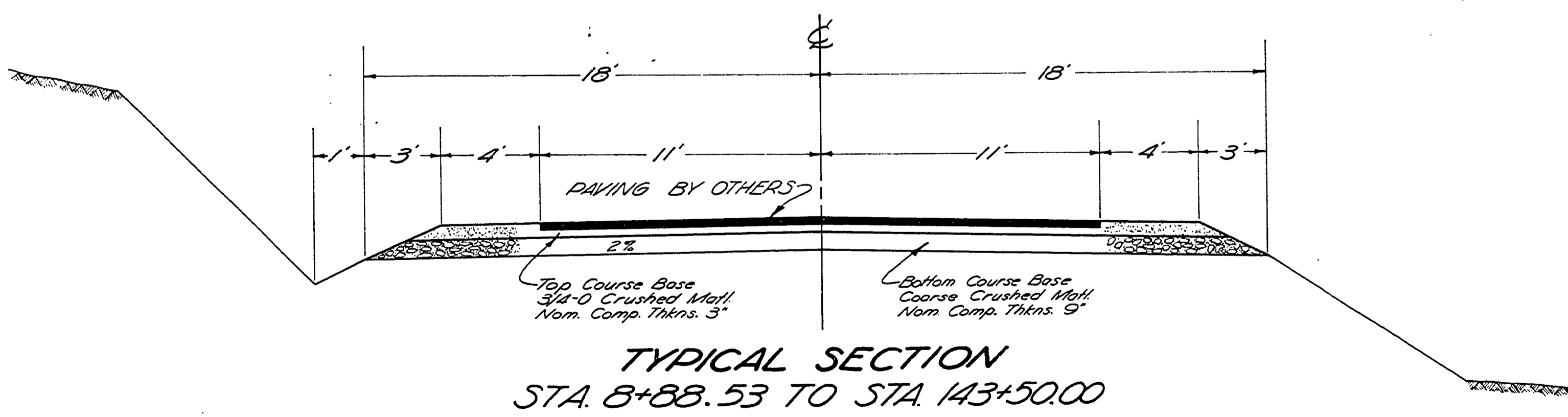
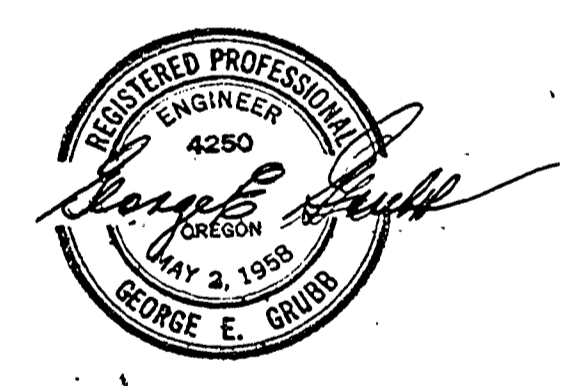
NORTH MYRTLE ROAD NO.15

GRAVEL SECTION

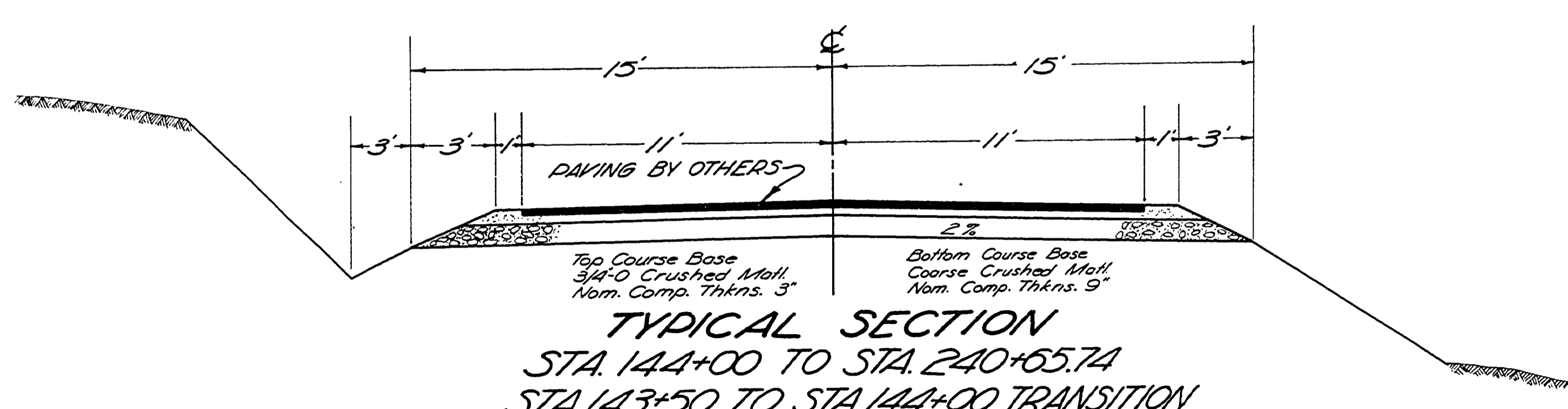
JULY 1968



QUANTITY SUMMARY				
ITEM	UNIT	QUANTITY	ALLOW.	QUAN.+ALLO.



TYPICAL SECTION
STA. 8+88.53 TO STA. 143+50.00



TYPICAL SECTION
STA. 144+00 TO STA. 240+65.74
STA. 143+50 TO STA. 144+00 TRANSITION SECTION

FILED
RECEIVED
APR 3 1968
COUNTY SURVEYOR
DOUGLAS COUNTY, OREGON

RD # 15

0977141T