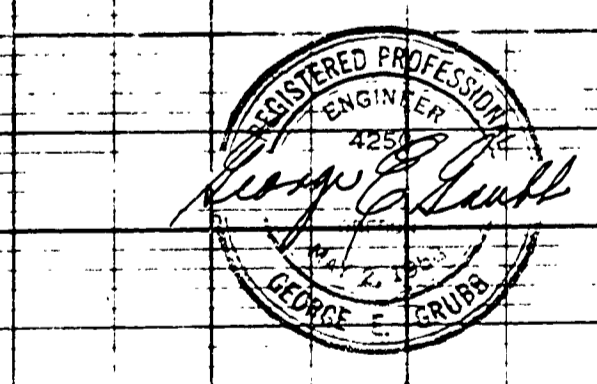
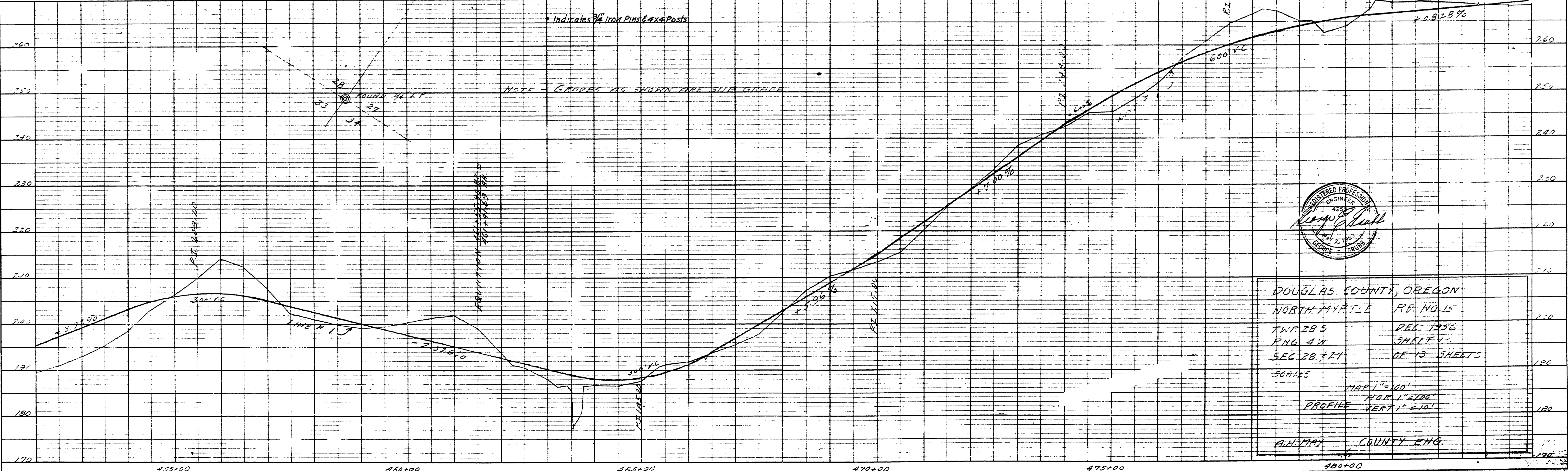
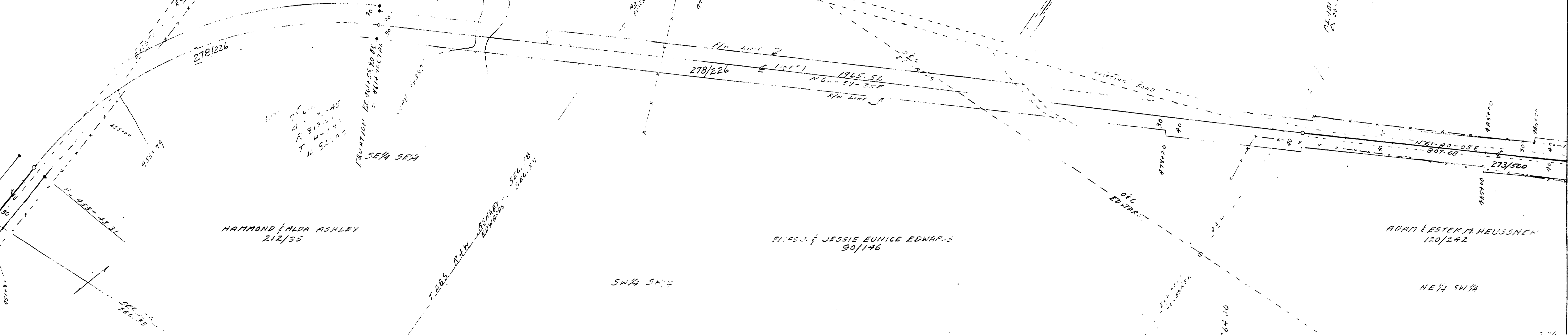


PERRY EDWARD DEIN  
 62' 1/4" 18" 0  
 FILED 9/15/19  
 C.J. 12/1/49  
 R.R. 3/1/58  
 FROM S 57A 442+30 TO IFFS CHECK

HELMER J. HEIBERG  
 196/197  
 254/195 & 166



DOUGLAS COUNTY, OREGON  
 NORTH MYRTLE RD. NO. 15  
 TWP. 28 S.      DEC. 1956  
 RANG. 4 W.      5412' 1/2"  
 SEC. 28 E 21.      OF 13 SHEETS  
 SCALES  
 MAP 1" = 100'  
 HOR. 1" = 200'  
 PROFILE VERT. 1" = 10'  
 G.A. MAX      COUNTY ENG.

PLATE 1-PLAN-PROFILE O.P.R.A.R.E. STANDARD  
 100% RAD PAPER MADE AND PRINTED IN U. S. A.  
 EUGENE DIETZGEN CO.

M.P. 8.78 - 9.40

DEC 1956  
 Rd. #15 sheet #12 of 13 sheets

08780940