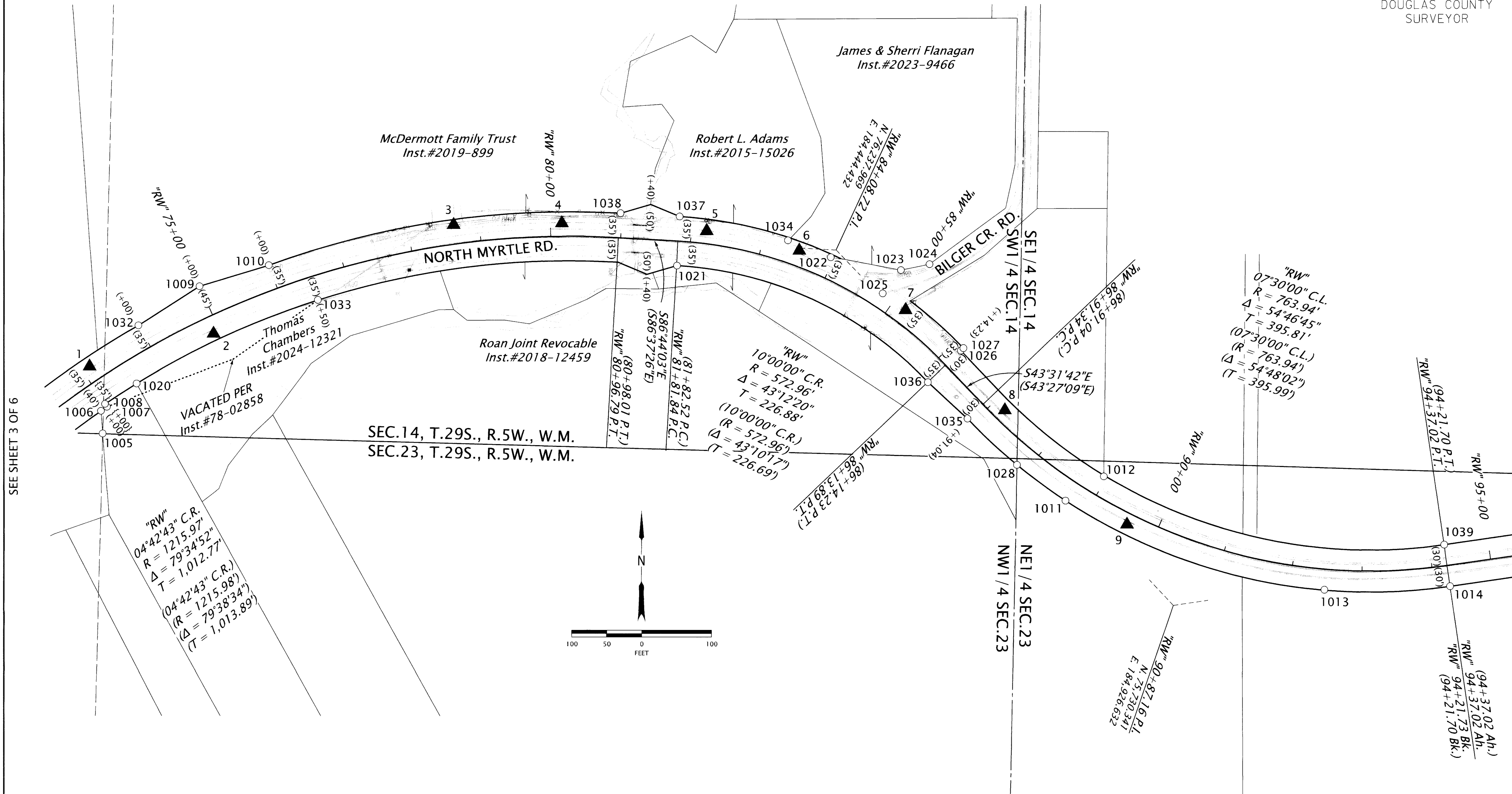


SW1/4 & SE1/4 SEC.14, T.29S., R.5W., W.M.  
 NW1/4 & NE1/4 SEC.23, T.29S., R.5W., W.M.

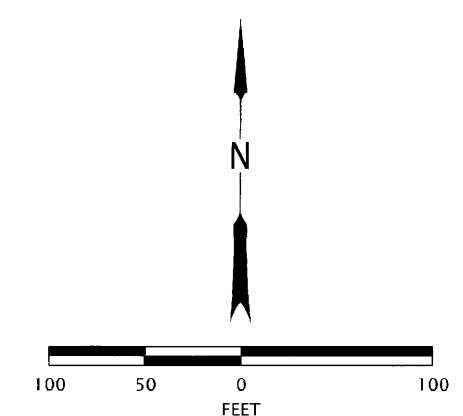
FILED  
 Date: 12-10-2025 By: *gj*  
 This survey consist of:  
 Map: Co. Rd. #15 6 pages  
 Narrative:  
 Corner Rpt:  
 DOUGLAS COUNTY  
 SURVEYOR



SEE SHEET 3 OF 6

SEE SHEET 5 OF 6

"RW"  
 04°42'43" C.R.  
 R = 1215.97'  
 Δ = 79°34'52"  
 T = 1,012.77'  
 (04°42'43" C.R.)  
 (R = 1215.98')  
 (Δ = 79°38'34")  
 (T = 1,013.89')



LEGEND	
▲	SET NETWORK POINT - AS NOTED IN TABLE ON SHEET 6
○	FOUND MONUMENT - AS NOTED IN TABLE ON SHEET 6
SEE SHEET 6 FOR LINE LEGEND, CONTROL & MONUMENT TABLE	

RECORD DATA	
( )	1968 DOUGLAS COUNTY ROAD NO.15 MAP NOS: 00460104; 01040155 & 01550214
{ }	VACATED PER INSTR. #78-02858
SEE SHEET 6 FOR LINE LEGEND, CONTROL & MONUMENT TABLE	

REGISTERED  
 PROFESSIONAL  
 LAND SURVEYOR  
*Eric B. Hibbs*  
 OREGON  
 NOVEMBER 13, 2018  
 ERIC BENJAMIN HIBBS  
 90437PLS  
 RENEWS: 06/30/2027

**OREGON DEPARTMENT OF TRANSPORTATION**  
 HORIZONTAL CONTROL, RECOVERY AND RETRACEMENT MAP  
 BILGER CREEK, COUNTY RD. 15, BRIDGE PROJECT  
 NORTH MYRTLE RD.  
 DOUGLAS COUNTY

ODOT REGION 3 TECH CENTER  
 3500 NW STEWART PKWY.  
 ROSEBURG, OR 97471 KEY NO. K23160

DECEMBER 2, 2025  
 SCALE: 1" = 100'  
 SHEET 4 OF 6

CO. RD. #15 MP 1.44-1.80

01440180