

SW 1/4 SEC.14, T.29S., R.5W., W.M.
 NW 1/4 SEC.23, T.29S., R.5W., W.M.

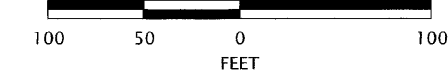
FILED

Date: 12-10-2025 By: [Signature]

This survey consist of:
 Map: Co. Rd. #15 6 pages

Narrative: _____
 Corner Rpt: _____
 DOUGLAS COUNTY SURVEYOR

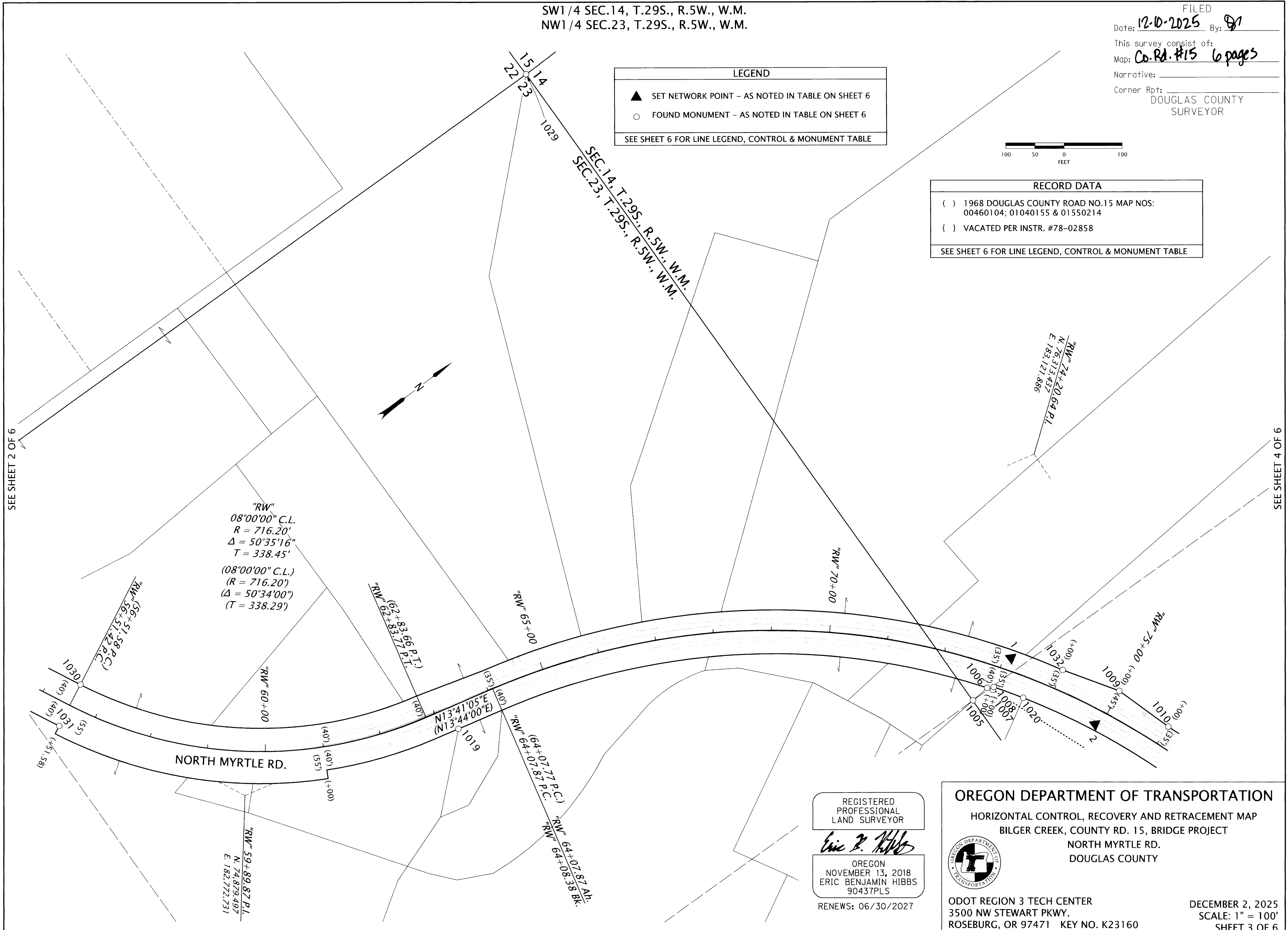
LEGEND	
▲	SET NETWORK POINT - AS NOTED IN TABLE ON SHEET 6
○	FOUND MONUMENT - AS NOTED IN TABLE ON SHEET 6
SEE SHEET 6 FOR LINE LEGEND, CONTROL & MONUMENT TABLE	



RECORD DATA	
()	1968 DOUGLAS COUNTY ROAD NO.15 MAP NOS: 00460104; 01040155 & 01550214
{ }	VACATED PER INSTR. #78-02858
SEE SHEET 6 FOR LINE LEGEND, CONTROL & MONUMENT TABLE	

SEE SHEET 2 OF 6

SEE SHEET 4 OF 6



REGISTERED PROFESSIONAL LAND SURVEYOR
Eric B. Hibbs
 OREGON
 NOVEMBER 13, 2018
 ERIC BENJAMIN HIBBS
 90437PLS
 RENEWS: 06/30/2027

OREGON DEPARTMENT OF TRANSPORTATION
 HORIZONTAL CONTROL, RECOVERY AND RETRACEMENT MAP
 BILGER CREEK, COUNTY RD. 15, BRIDGE PROJECT
 NORTH MYRTLE RD.
 DOUGLAS COUNTY

ODOT REGION 3 TECH CENTER
 3500 NW STEWART PKWY.
 ROSEBURG, OR 97471 KEY NO. K23160

DECEMBER 2, 2025
 SCALE: 1" = 100'
 SHEET 3 OF 6

01080144