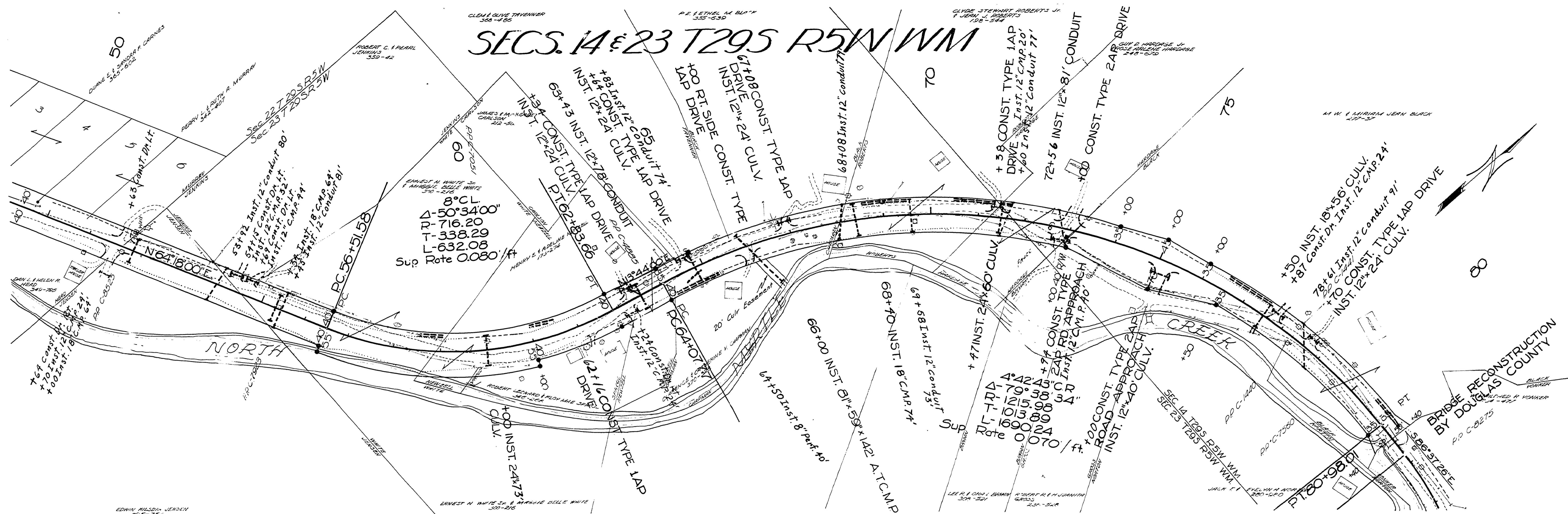


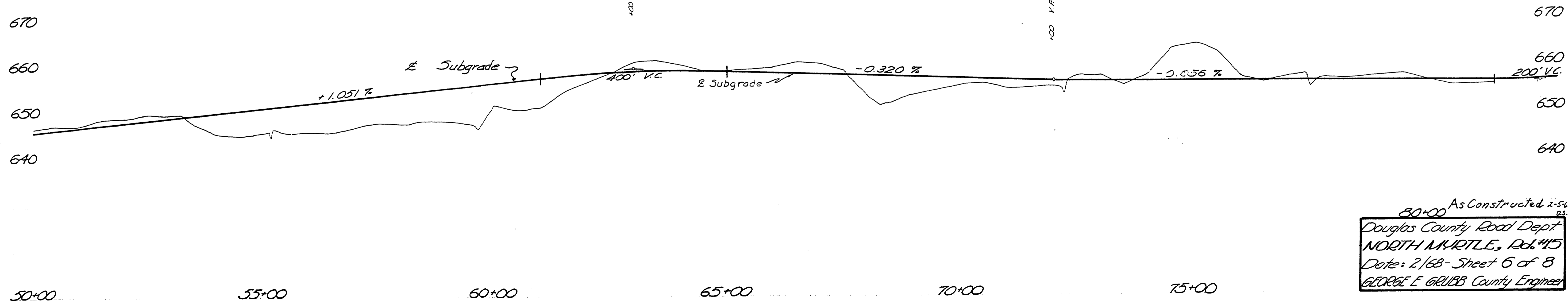
# SECS. 14 & 23 T29S R5W WM



8° CL  
 $\Delta$  - 50° 34' 00"  
 P - 716.20  
 T - 338.29  
 L - 632.08  
 Sup Rate 0.080' / ft

4° 42' 45"  
 $\Delta$  - 1215.38  
 P - 1013.88  
 T - 1690.24  
 L - 1070.00  
 Sup Rate 0.070' / ft

• Indicates 3/4" Iron Rod R/W Pin



As Constructed 2-5-68  
 Douglas County Road Dept.  
 NORTH MAPLE, Reb #15  
 Date: 2/68 - Sheet 6 of 8  
 GEORGE E. GRUBS County Engineer

01040155

M.P. 1.04 - 1.55

Rd. # 15 Feb. 1968