

SW1/4 & SE1/4 SEC.14, T.29S., R.5W., W.M.  
 NW1/4 & NE1/4 SEC.23, T.29S., R.5W., W.M. & NE1/4 SEC.22, T.29S., R.5W., W.M.

FILED

Date: 12-10-2025 By: [Signature]

SHEET INDEX:

- 1 CONTROL NARRATIVE, SHEET LAYOUT, SURVEY NARRATIVE, NETWORK DIAGRAM
- 2-5 SURVEY SHEETS
- 6 CONTROL POINT TABLE, RECOVERED MONUMENT TABLE AND LINE LEGEND

This survey consist of:

Map: Co. Rd. #15 6 pages

Narrative: \_\_\_\_\_

Corner Rpt: \_\_\_\_\_

DOUGLAS COUNTY  
SURVEYOR

CONTROL INFORMATION:

SURVEY DATUM- PER OAR 734-005-015 OREGON COORDINATE  
 REFERENCE SYSTEM (OCRS):  
 COTTAGE GROVE - CANYONVILLE ZONE  
 NAD83(2011) EPOCH 2010 (INTERNATIONAL FEET)

EQUIPMENT-

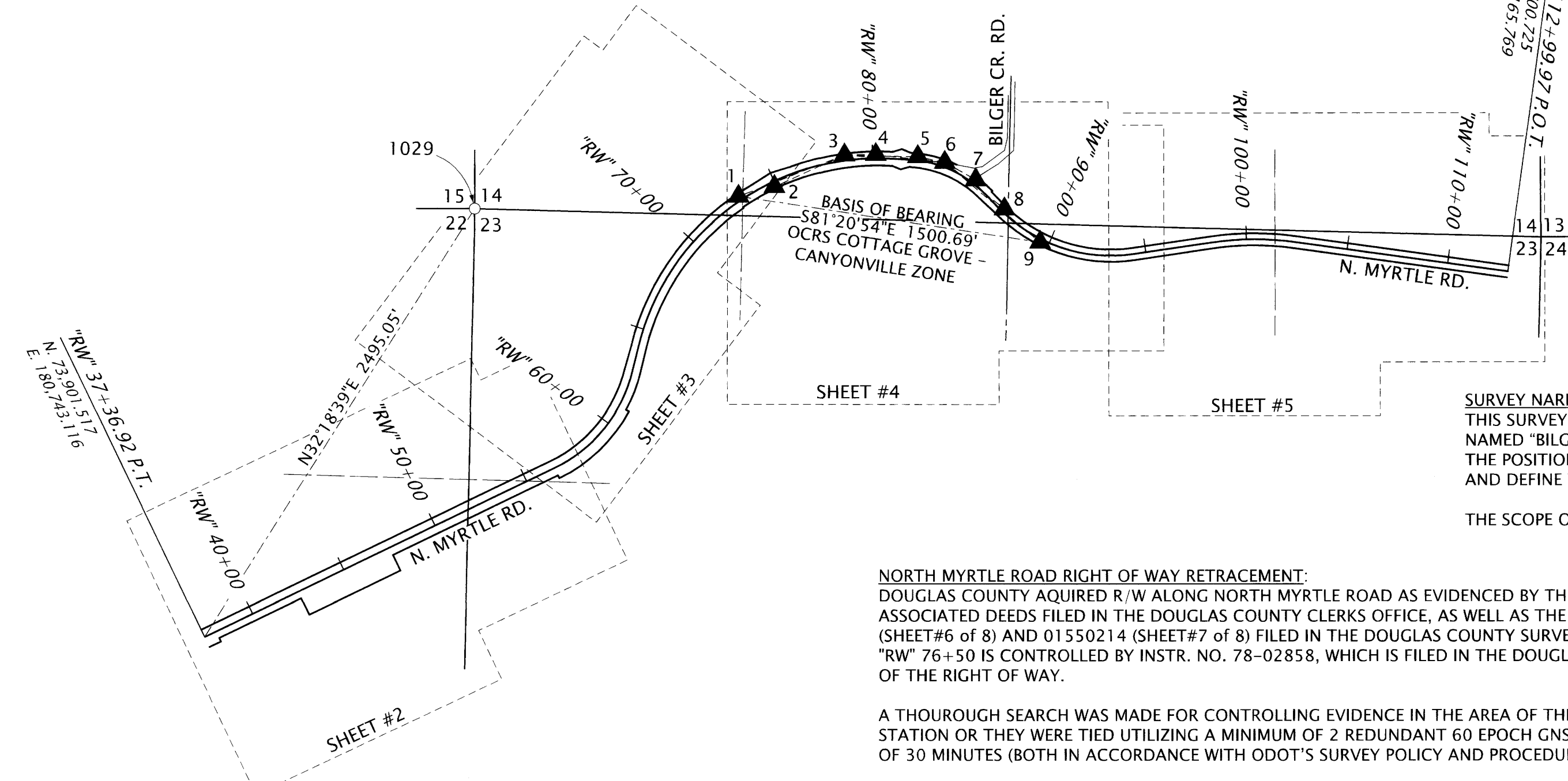
THE FIELD WORK FOR THIS PROJECT WAS INITIATED IN APRIL OF 2024 AND CARRIED ON INTERMITTENTLY THROUGH MAY OF 2025. EQUIPMENT UTILIZED TO PERFORM THE FIELD WORK INCLUDES: 2 LEICA GS18T GNSS RECEIVER, 1 LEICA TS16 TOTAL STATION, 2 LEICA CS20 DATA COLLECTORS AND 1 LEICA LS15 DIGITAL LEVEL.

PROJECT CONTROL AND BASIS OF BEARINGS:

ALL BEARINGS FOR THIS SURVEY ARE BASED ON THE OREGON COORDINATE REFERENCE SYSTEM (OCRS), COTTAGE GROVE - CANYONVILLE ZONE, NAD83 (2011), EPOCH 2010. ALL COORDINATES ARE IN INTERNATIONAL FEET.

CONTROL WAS ESTABLISHED UTILIZING A MINIMUM OF 2 REDUNDANT 60 EPOCH GNSS OBSERVATIONS WHILE CONNECTED TO THE ORGN (OBSERVATIONS WERE SEPERATED BY AT LEAST 30 MINUTES AND IN ACCORDANCE WITH ODOT'S SURVEY POLICY AND PROCEDURES MANUAL); ANGLES WERE THEN TURNED BETWEEN CONTROL POINTS USING THE LEICA TOTAL STATION (IN ACCORDANCE WITH ODOT'S SURVEY POLICY AND PROCEDURES MANUAL) AND LEVELS WERE THEN RUN HOLDING THE NAVD88 ELEVATION (GPS DERIVED - GEOID12A) ON #3. A LEAST SQUARE ADJUSTMENT WAS THEN PERFORMED ON THE CONTROL TO COME UP WITH THE ADJUSTED COORDINATE VALUES FOR THE CONTROL POINTS

CONTROL POINTS FOR THIS SURVEY WERE NOT SET ON AND DO NOT REPRESENT PROPERTY OR RIGHT OF WAY LINES AND ARE INTENDED FOR THE USE BY ODOT IN SUPPORT OF THIS PROJECT. IT IS NOT THE INTENT OF ODOT TO PERPETUATE THESE CONTROL POINT AS MONUMENTS.



SURVEY NARRATIVE:

THIS SURVEY WAS MADE AS A RESULT OF THE OREGON DEPARTMENT OF TRANSPORTATION'S PROJECT NAMED "BILGER CREEK, COUNTY RD.15, BRIDGE PROJECT." THE PURPOSE OF THIS SURVEY IS TO RECORD THE POSITIONS OF MONUMENTS OF RECORD, RESOLVE THE EXISTING RIGHT OF WAY (R/W) CENTERLINE AND DEFINE THE EXISTING RIGHT OF WAY LINES AS DIRECTED IN OREGON REVISED STATUTES (ORS) 209.155.

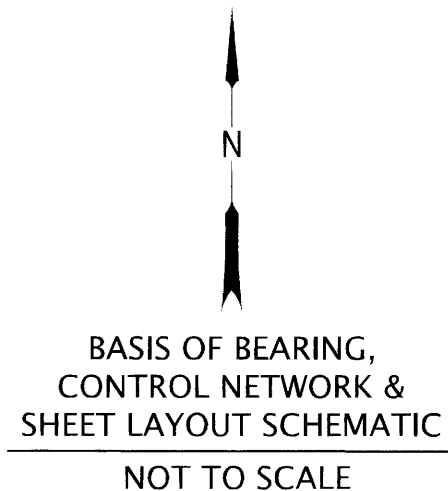
THE SCOPE OF THIS PROJECT IS FOR THE PURPOSE OF REPLACING THE BILGER CREEK BRIDGE.

NORTH MYRTLE ROAD RIGHT OF WAY RETRACEMENT:

DOUGLAS COUNTY AQUIRED R/W ALONG NORTH MYRTLE ROAD AS EVIDENCED BY THE NORTH MYRTLE CREEK ROAD NO. 15 (URBAN) ROAD DOCKET NO. 998 AND ASSOCIATED DEEDS FILED IN THE DOUGLAS COUNTY CLERKS OFFICE, AS WELL AS THE 1968 DOUGLAS COUNTY R/W MAP NOS: 00460104 (SHEET#5 of 8); 01040155 (SHEET#6 of 8) AND 01550214 (SHEET#7 of 8) FILED IN THE DOUGLAS COUNTY SURVEYOR'S OFFICE. THE EASTERLY ROW LINE BETWEEN STATIONS "RW" 73+00 AND "RW" 76+50 IS CONTROLLED BY INSTR. NO. 78-02858, WHICH IS FILED IN THE DOUGLAS COUNTY CLERKS OFFICE, WHERE DOUGLAS COUNTY VACATED A PORTION OF THE RIGHT OF WAY.

A THOROUGH SEARCH WAS MADE FOR CONTROLLING EVIDENCE IN THE AREA OF THE PROJECT. THE FOUND MONUMENTS WERE EITHER TIED WITH THE LEICA TOTAL STATION OR THEY WERE TIED UTILIZING A MINIMUM OF 2 REDUNDANT 60 EPOCH GNSS OBSERVATIONS WHILE CONNECTED TO THE ORGN, SEPERATED BY A MINIMUM OF 30 MINUTES (BOTH IN ACCORDANCE WITH ODOT'S SURVEY POLICY AND PROCEDURES MANUAL).


AFTER ANALYZING THE EVIDENCE AVAILABLE, MONUMENTS THAT WERE FOUND ON THE TANGENTS WERE USED TO HELP RESOLVE THE TANGENTS, THE P.I.'S WERE ESTABLISHED AT THE INTERSECTIONS OF THOSE TANGENTS AND THE RECORD DEGREE OF CURVE WAS HELD. THE RIGHT OF WAY CENTERLINE OF NORTH MYRTLE CREEK ROAD WAS RETRACTED BETWEEN STATION "RW" 37+36.92 AND "RW" 112+99.97. STARTING AT THE TANGENT BETWEEN STATION "RW" 37+36.92 AND "RW" 56+51.42, THE SPLIT OF THE RECORD OFFSETS AT POINT NO. 1030 AND 1031 WAS HELD FOR LOCATION AND RECORD STATIONING OF 56+51.58, THE RECORD TANGENT LENGTH OF 1914.66 FEET WAS THEN EXTENDED BACK THROUGH THE SPLIT OF RECORD OFFSETS AT POINT NO. 1001 AND 1002 TO ESTABLISH THE TANGENT. THE MONUMENTS ON THE NEXT TANGENT BETWEEN "RW" 62+83.77 AND "RW" 64+07.87 WERE NOT FOUND, SO THE RECORD TANGENT DISTANCE OF 338.29 FEET WAS EXTENDED FROM "RW" 56+51.58 TO ESTABLISH THE P.I. OF THE CURVE AT "RW" 59+89.87. THEN WORKING BACK ON STATION, THE TANGENT BETWEEN "RW" 112+99.97 AND "RW" 102+36.00 HELD RECORD DISTANCE FROM POINT NO. 1018 AND 1040. THE TANGENT BETWEEN "RW" 98+31.89 AND "RW" 94+37.02 HELD THE SPLIT OF THE RECORD OFFSETS AT POINT NOS. 1015 AND 1016 AND THE SPLIT OF THE RECORD OFFSETS AT POINT NOS. 1014 AND 1039. THE TANGENT BETWEEN "RW" 86+91.34 AND "RW" 86+13.89 HELD THE RECORD OFFSET FROM POINT NO. 1035 AND THE SPLIT OF THE RECORD OFFSETS AT POINT NOS. 1026 AND 1027. THE TANGENT BETWEEN "RW" 81+81.84 AND "RW" 80+96.79 HELD THE SPLIT OF THE RECORD OFFSETS AT POINT NOS. 1021 AND 1037 AND THE RECORD OFFSET FROM POINT NO. 1038. THE RECORD TANGENT DISTANCE OF 1013.89 FEET WAS EXTENED FROM POINT NO. 1038 TO ESTABLISH THE P.I. OF THE CURVE AT "RW" 74+20.64. THE P.I. AT "RW" 74+20.64 AND THE P.I. AT "RW" 59+89.87 WERE HELD TO ESTABLISH THE TANGENT BETWEEN "RW" 62+83.77 AND "RW" 64+07.87. THE TANGENTS WERE HELD AND EXTENDED TO THEIR RESPECTIVE INTERSECTIONS TO ESTABLISH THE P.I.'S AND RECORD DEGREE OF CURVE WAS HELD FOR ALL CURVES. EQUATION STATIONS WERE PLACED AT "RW" 64+08.38 (BACK) / "RW" 64+07.87 (AHEAD) AND "RW" 94+21.73 (BACK) / "RW" 94+37.02 (AHEAD) TO BETTER FIT STATIONING AT FOUND MONUMENTS AT EXISTING JOGS IN THE RIGHT OF WAY LINES AND EVENT STATIONS.



LEGEND	
▲	SET NETWORK POINT
▲-▲	LINES OF OBSERVATION
○	FOUND MONUMENT
SEE SHEET 6 FOR CONTROL & MONUMENT TABLE	

REGISTERED PROFESSIONAL LAND SURVEYOR  
*Eric B. Hibbs*  
 OREGON  
 NOVEMBER 13, 2018  
 ERIC BENJAMIN HIBBS  
 90437PLS  
 RENEWS: 06/30/2027

OREGON DEPARTMENT OF TRANSPORTATION  
 HORIZONTAL CONTROL, RECOVERY AND RETRACEMENT MAP  
 BILGER CREEK, COUNTY RD. 15, BRIDGE PROJECT  
 NORTH MYRTLE RD.  
 DOUGLAS COUNTY



ODOT REGION 3 TECH CENTER  
 3500 NW STEWART PKWY.  
 ROSEBURG, OR 97471 KEY NO. K23160

DECEMBER 2, 2025  
 SCALE: NTS  
 SHEET 1 OF 6