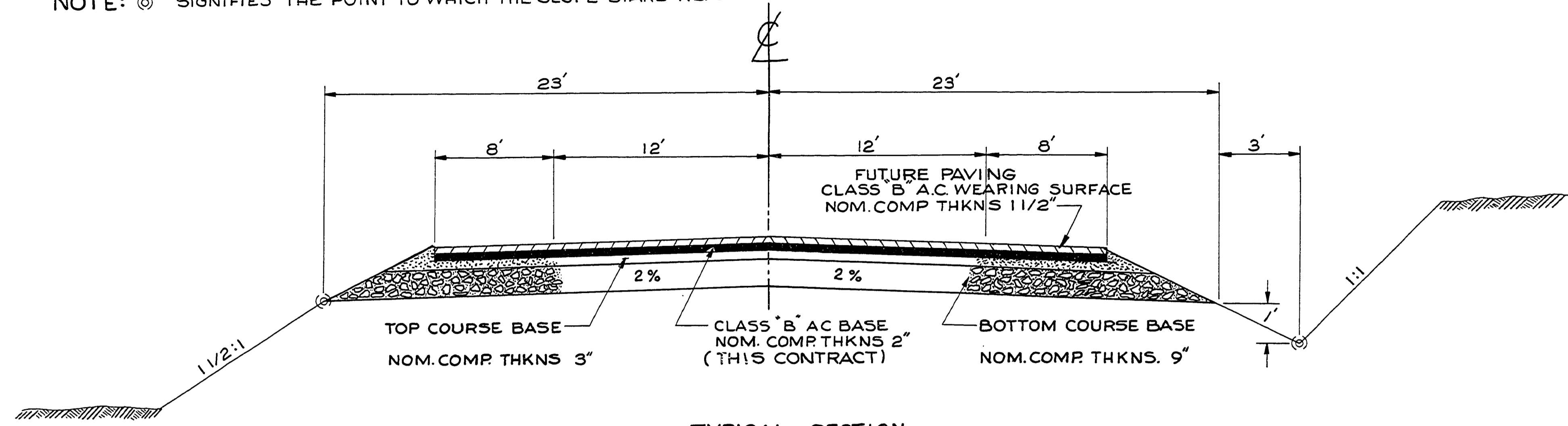
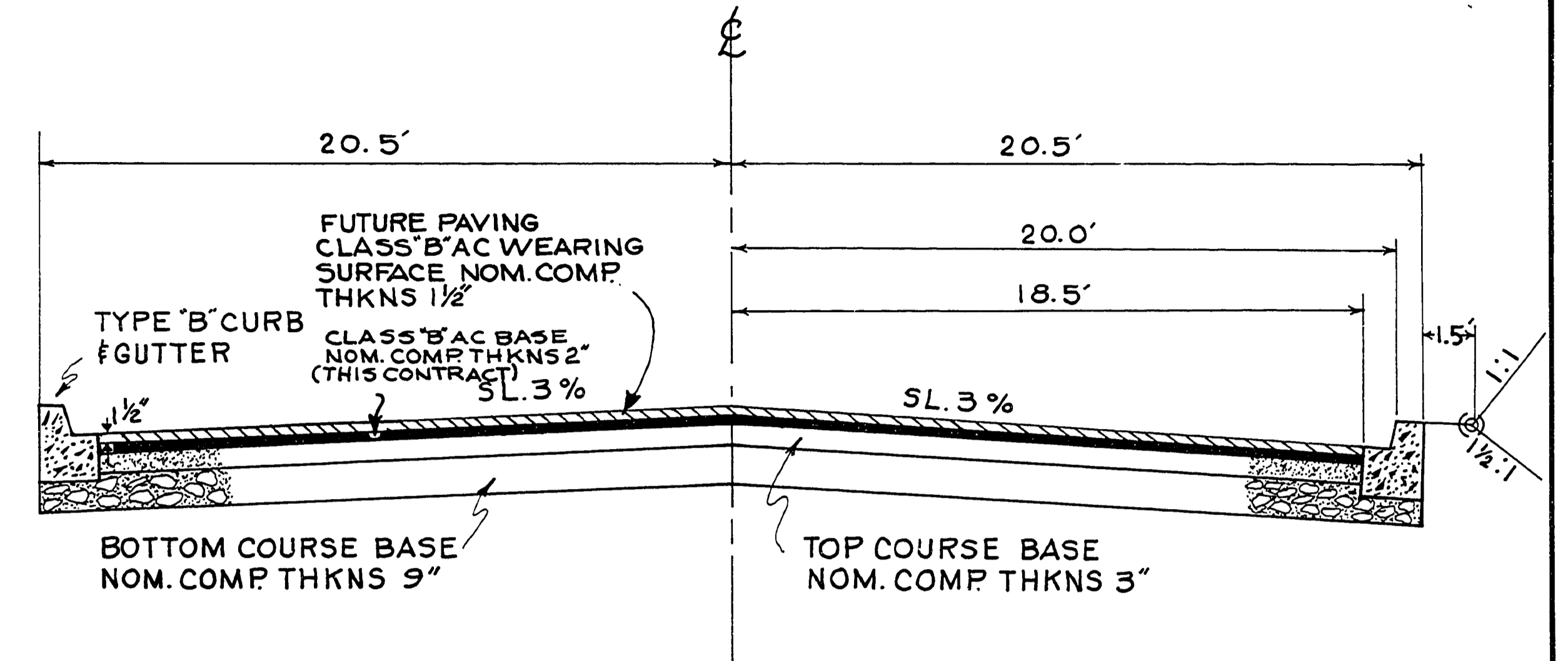


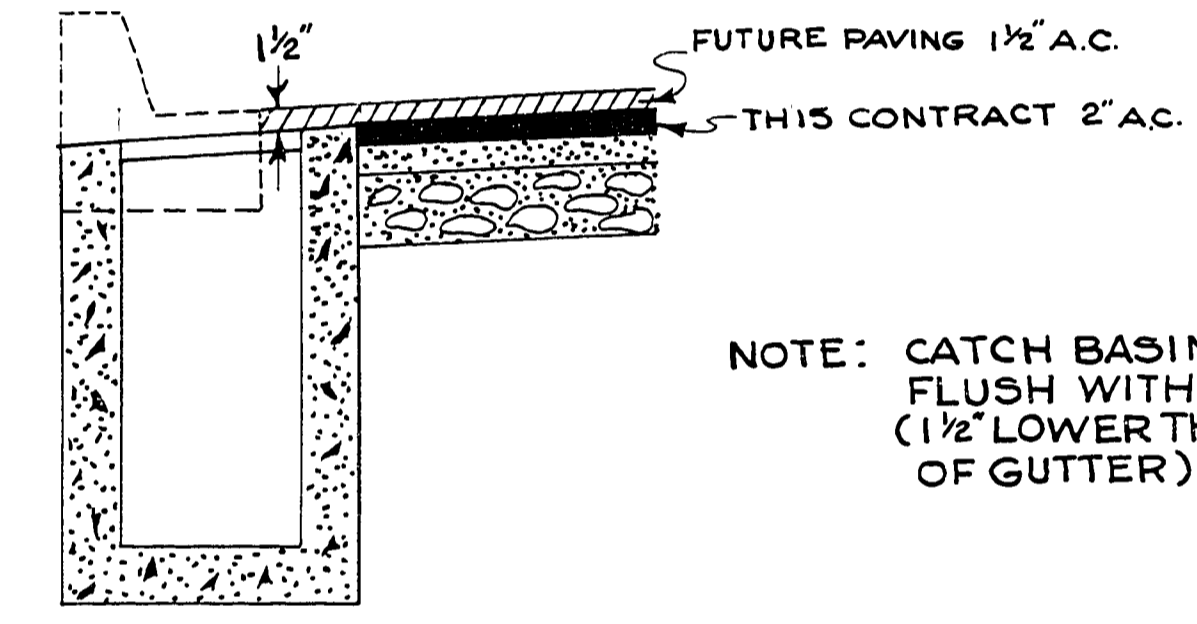
NOTE: © SIGNIFIES THE POINT TO WHICH THE SLOPE STAKE REFERS.



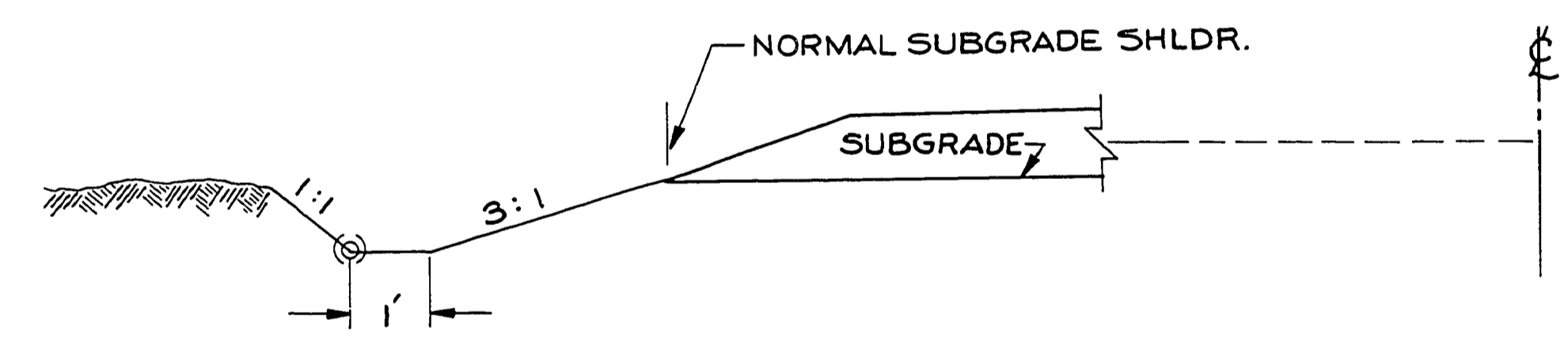
TYPICAL SECTION  
 STA. 101+00-175+00  
 STA. 172+00-175+00 TRANSITION  
 SECTION 2% CROWN TO 3% CROWN  
 STA. 194+33-200+30



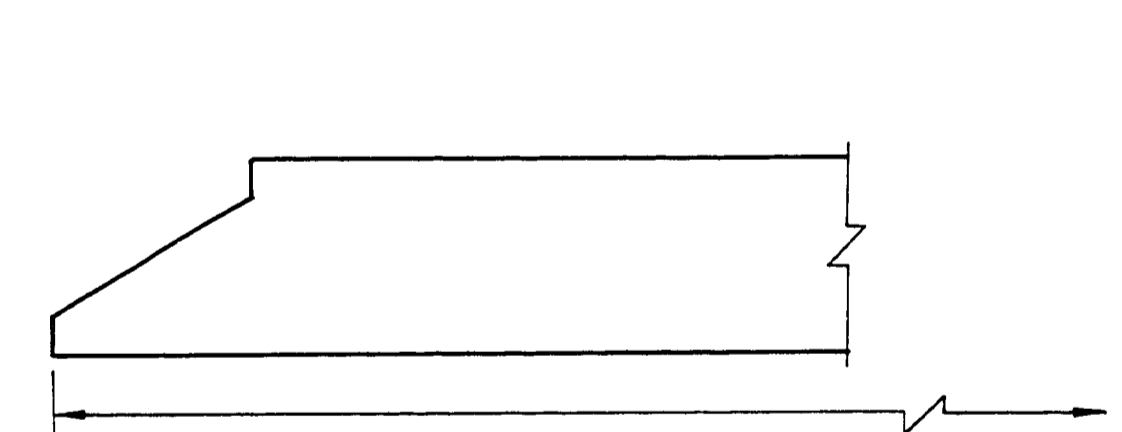
TYPICAL CURB SECTION  
 STA. 175+00-193+13  
 STA. 200+30-214+00



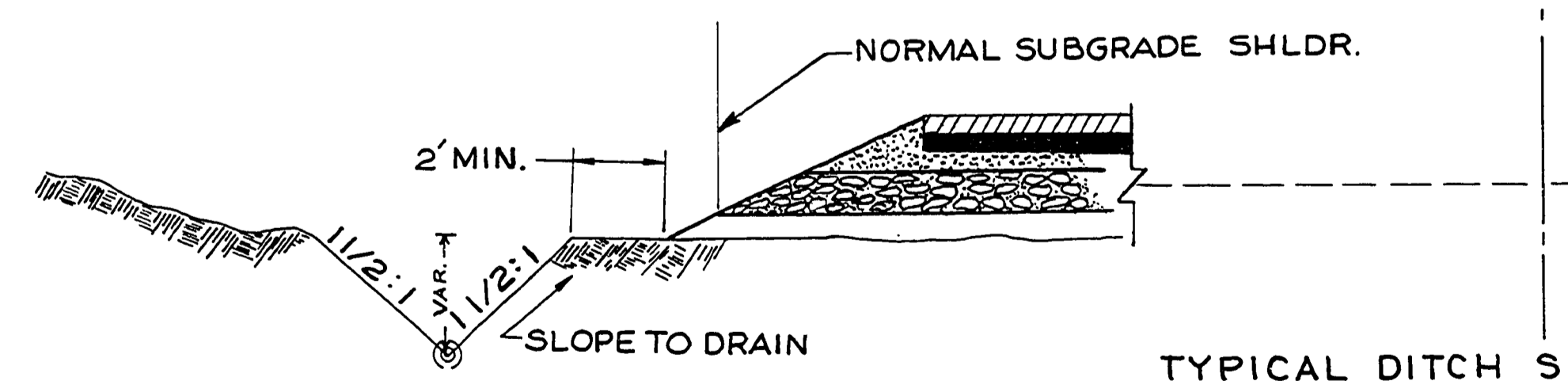
NOTE: CATCH BASIN TO BE  
 FLUSH WITH 2" A.C. P.V.M.T.  
 (1 1/2" LOWER THAN EDGE  
 OF GUTTER)



TYPICAL DITCH SECTION  
 STA. 101+00 - STA. 109+00 LT. SIDE



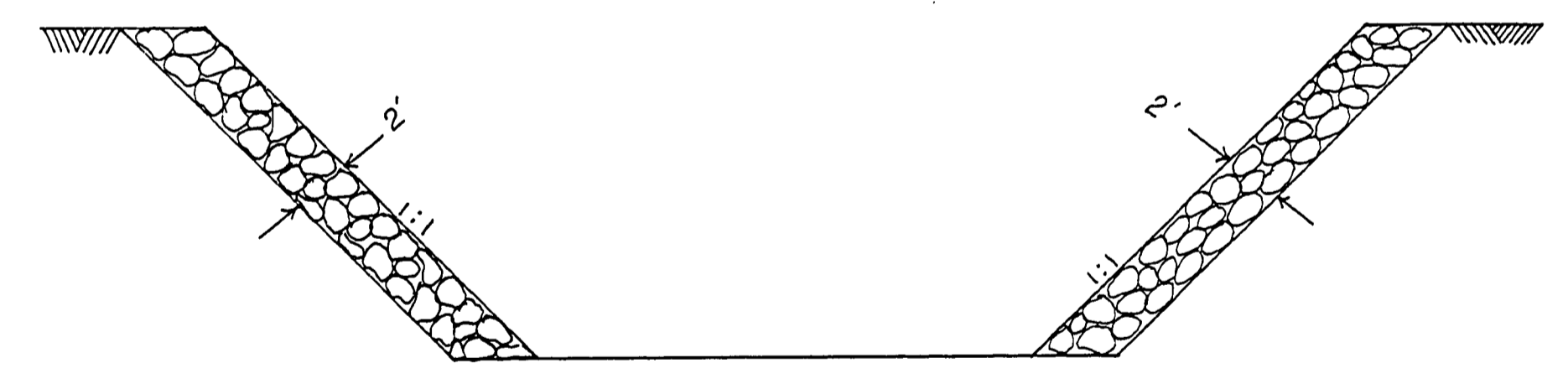
PLAN & PAY LENGTH  
 LONGITUDINAL SECTION  
 SLOPED ENDS FOR METAL PIPES  
 AS PER O.S.H.D. STD DWG # 2112



TYPICAL DITCH SECTION IN FILL AREA

LT. SIDE  
 STA. - STA.  
 117+29-121+18  
 170+75-175+00  
 194+00-198+00

RT. SIDE  
 STA. - STA.  
 101+15-110+00  
 117+45-121+18



PLACEMENT OF LOOSE RIPRAP  
 CLASS 100 AT STA. 117+29  
 OUTLET DITCH

REVISED AS BUILT 12/14/98 J.C.

DOUGLAS COUNTY ROAD DEPT.  
 ROSEBURG, MELROSE, UMPQUA #13  
 DATE: SEPT. 1970 5HT. 3  
 GEORGE E. GRUBB COUNTY ENG.

0599079T