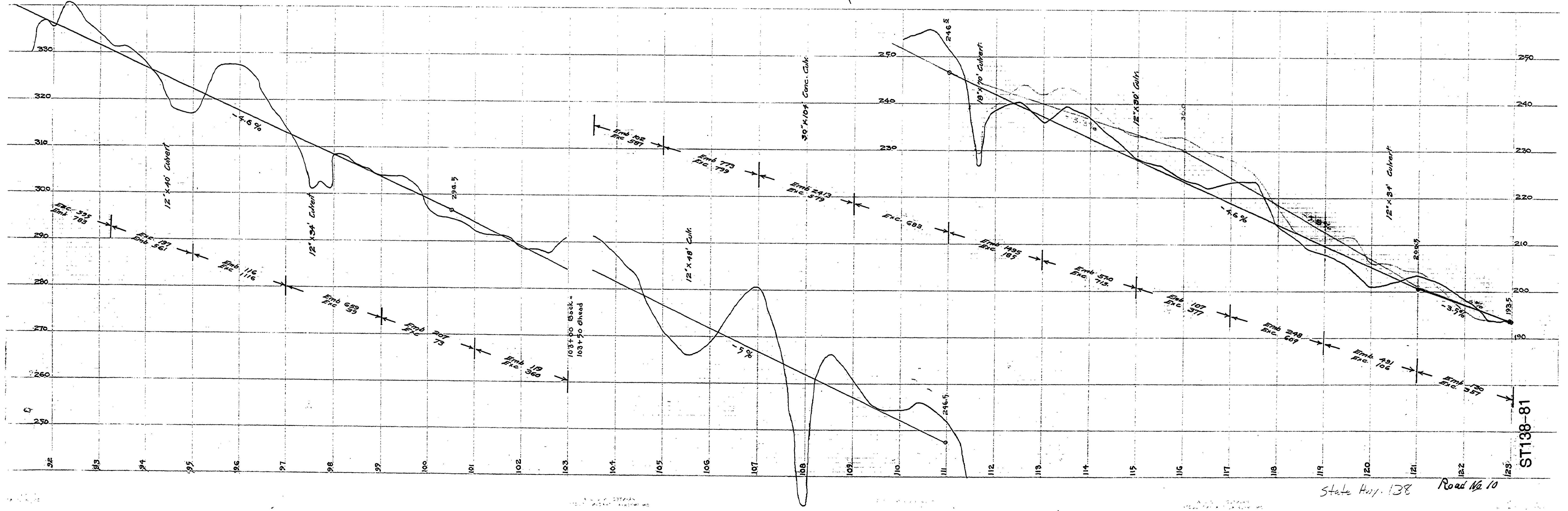


DOUGLAS COUNTY
 HIGHWAY IMPROVEMENT
 PROFILE AND ALIGNMENT
 ROCHESTER BRIDGE-ELKTON
 KESTERSON HILL SECTION
 MARKET ROAD 10

SEC. 17-8 T23S R7W
 Scale 1"=100'
 LOW 10A
 R.C. FEAR
 COUNTY ENGINEER
 APRIL 1926



State Hwy. 138 Road 10