

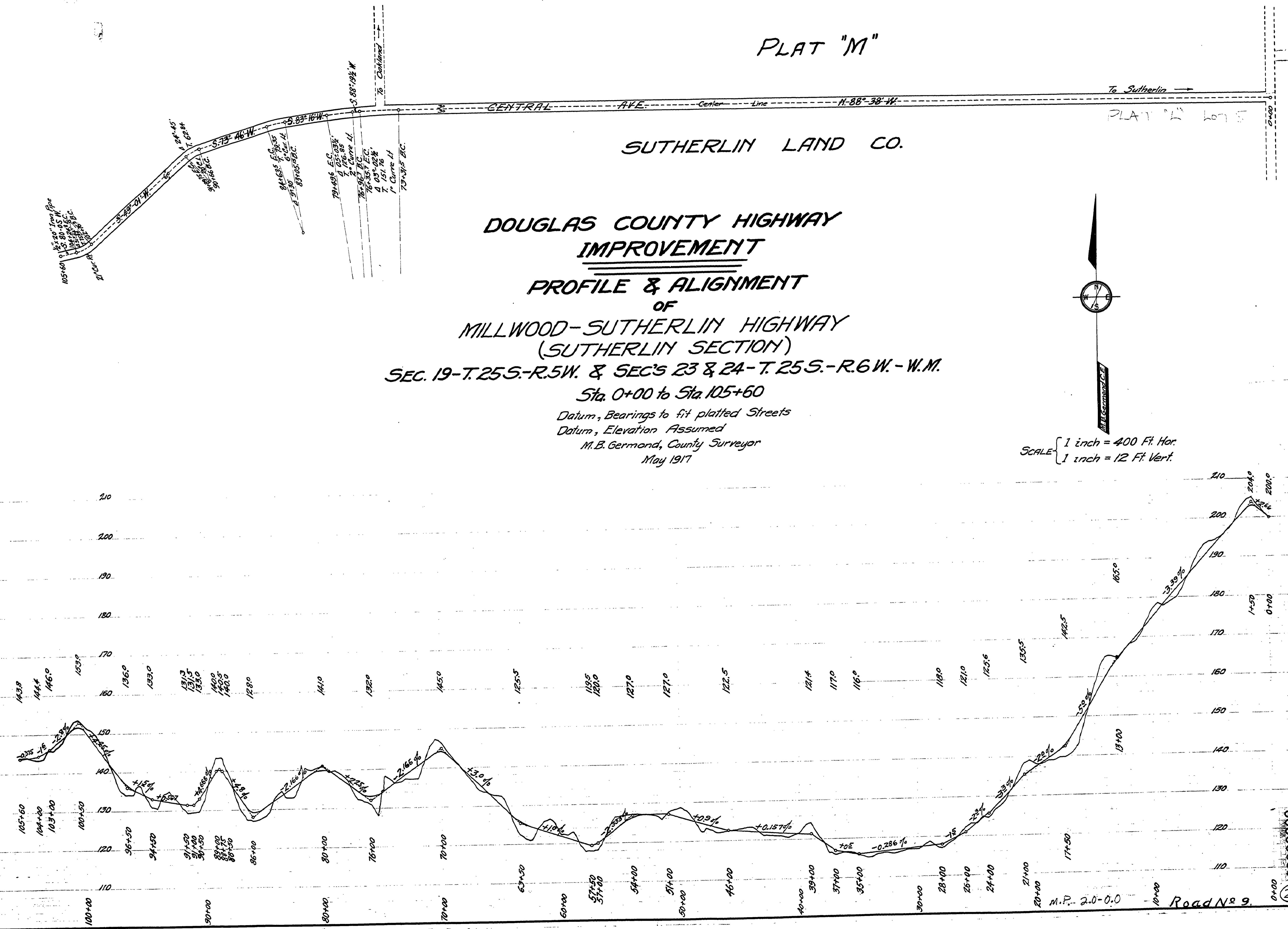
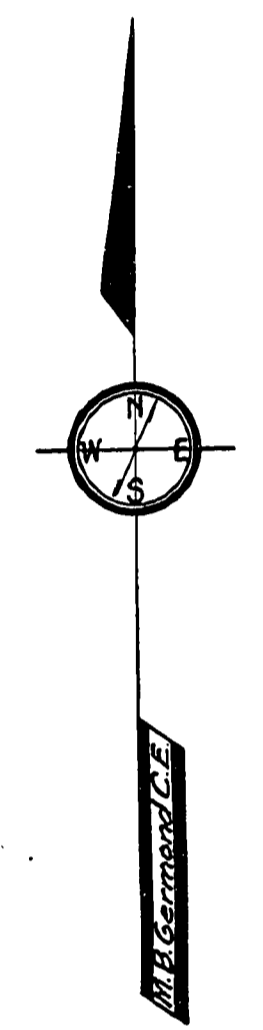
PLAT "M"

SUTHERLIN LAND CO.

**DOUGLAS COUNTY HIGHWAY  
IMPROVEMENT  
PROFILE & ALIGNMENT  
OF  
MILLWOOD-SUTHERLIN HIGHWAY  
(SUTHERLIN SECTION)  
SEC. 19-T.25S.-R.5W. & SEC'S 23 & 24-T.25S.-R.6W.-W.M.  
Sta. 0+00 to Sta. 105+60**

Datum, Bearings to fit platted Streets  
Datum, Elevation Assumed  
M.B. Germond, County Surveyor  
May 1917

SCALE { 1 inch = 400 Ft. Hor.  
1 inch = 12 Ft. Vert.



18

② 02000000