

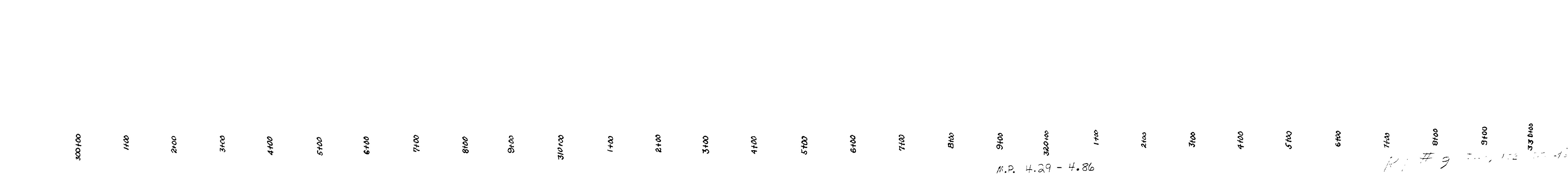
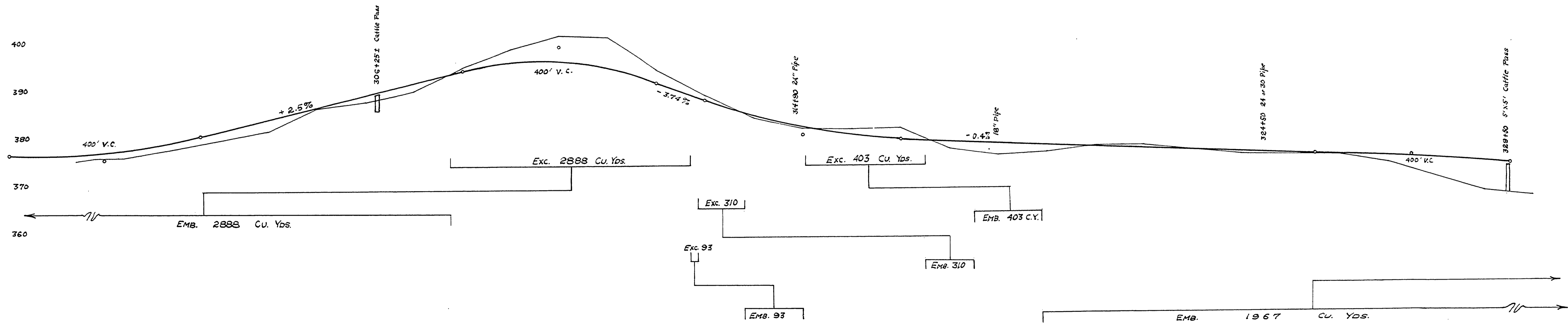
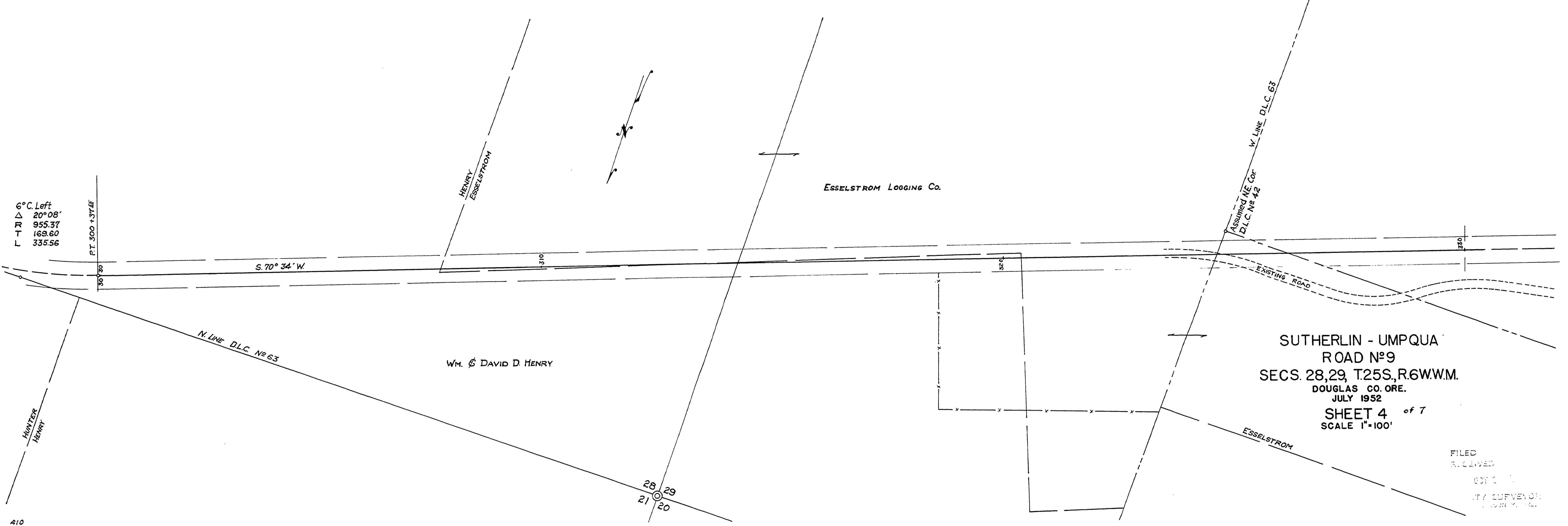
6° C. Left  
 Δ 20° 08'  
 R 955.37  
 T 169.60  
 L 335.56

ESSELSTROM Logging Co.

WM. & DAVID D. HENRY

SUTHERLIN - UMPQUA  
 ROAD No 9  
 SECS. 28, 29, T25S, R.6W, W.M.  
 DOUGLAS CO. ORE.  
 JULY 1952  
 SHEET 4 of 7  
 SCALE 1"=100'

FILED  
 RECEIVED  
 JUL 1 1952  
 COUNTY ENGINEER  
 CLATSOP COUNTY, ORE.



04290486

21