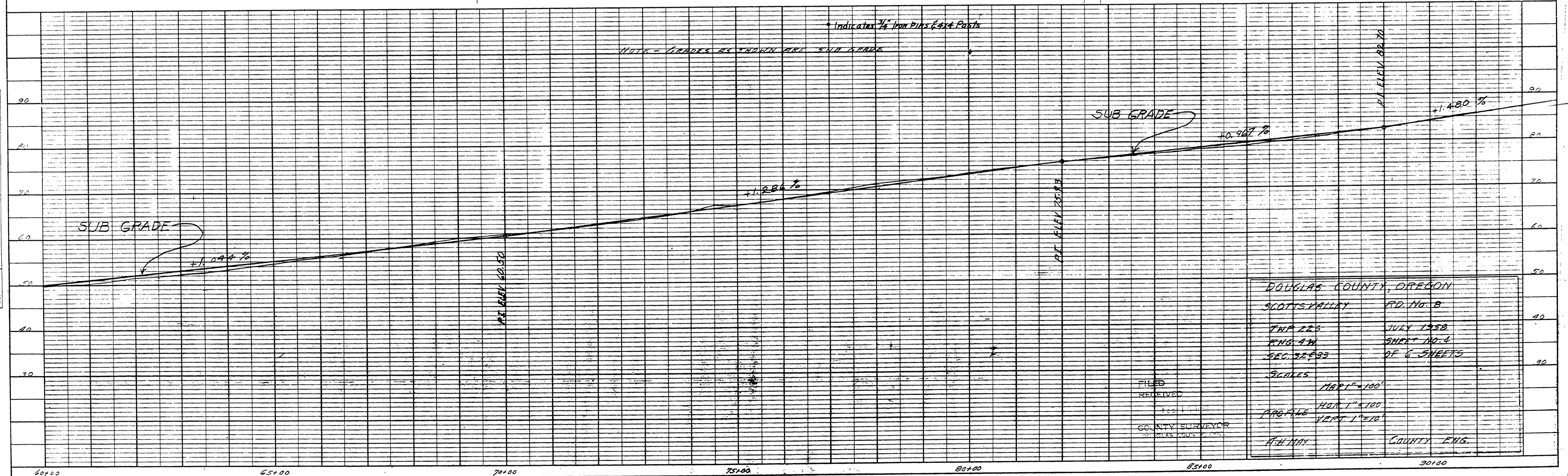
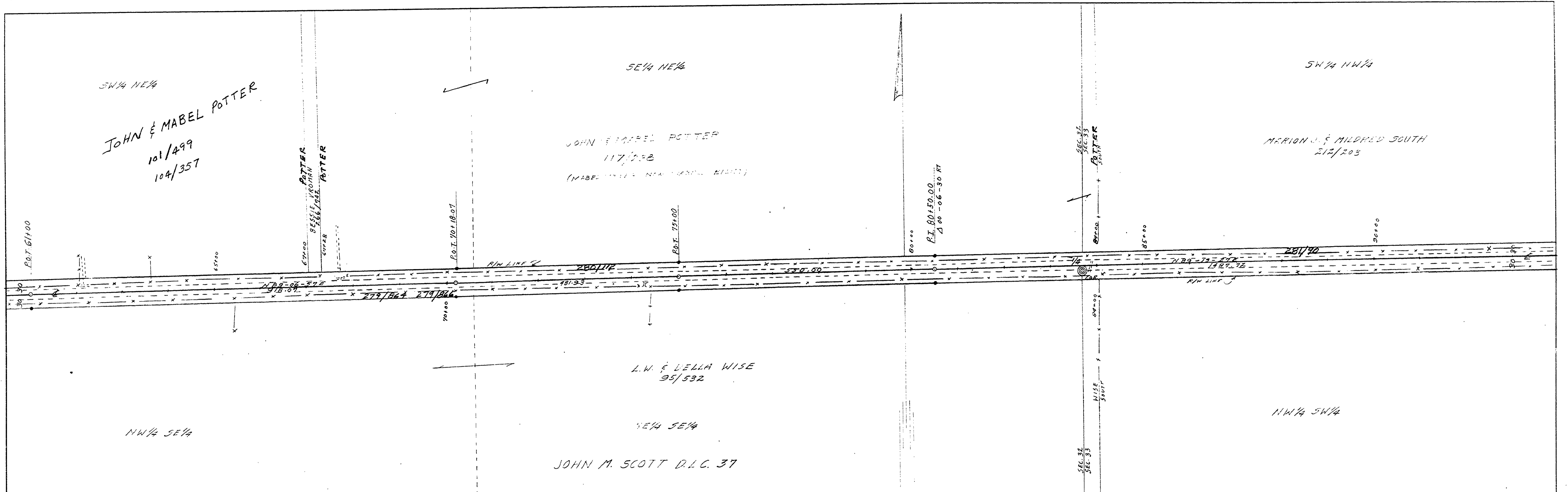


NOTE BOOK AT MENEM CHECKED BY PLAN CHECKER

NOTE BOOK GRADES CHECKED BY SURVEYOR



DOUGLAS COUNTY, OREGON  
 SCOTTS VALLEY RD. NO. B  
 TWP 22S JULY 1958  
 RANG 4W SHEET NO. 4  
 SEC. 32, 33 OF 6 SHEETS  
 SCALES: HORIZ. 1"=100'  
 VERT. 1"=10'  
 COUNTY SURVEYOR  
 H.H. HAY COUNTY ENG.

PLATE 1-PLAN-PROFILE "D.P.S. & R.E. STANDARD"  
 MADE IN U.S.A.  
 EUGENE-DIETZGEN CO.

M.P. 1.56-2.13

JULY 1958  
 Rd. # B sheet # 4 of 6 sheets

01560213