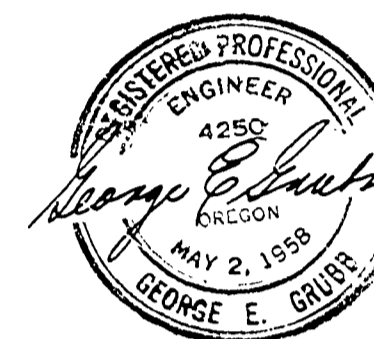
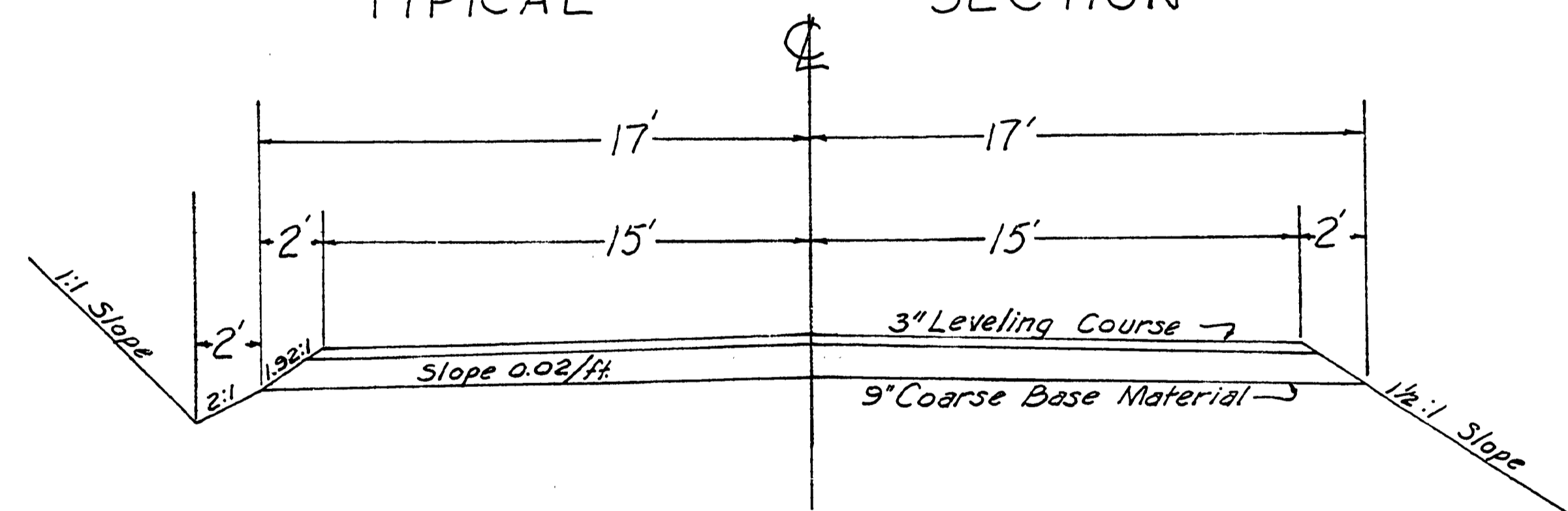


DOUGLAS COUNTY, OREGON
 PLANS FOR CONSTRUCTED PROJECT
 GRADING SURFACING FENCING
SCOTT'S VALLEY ROAD
 COUNTY ROAD NO. 8

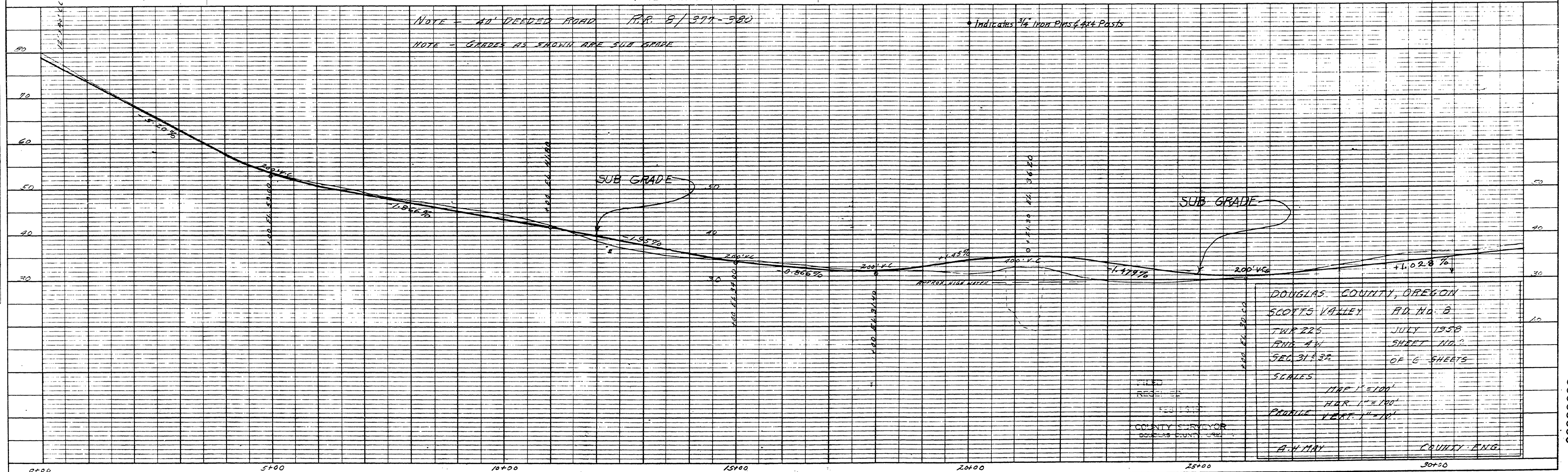
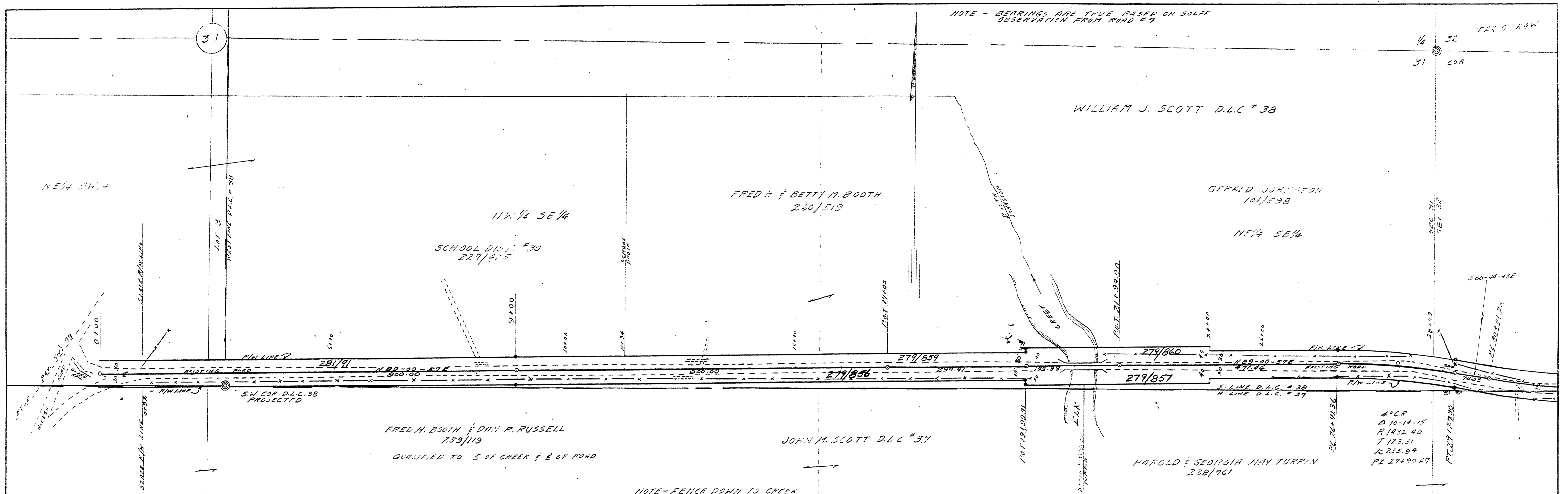


TYPICAL SECTION



NOTE BOOK
ALIGNMENT CHECKED
BY: [blank]
RT. OF WAY CHECKED
BY: [blank]

NOTE BOOK
GRADES CHECKED
BY: [blank]
STRUCTURE NOTES CHECKED
BY: [blank]



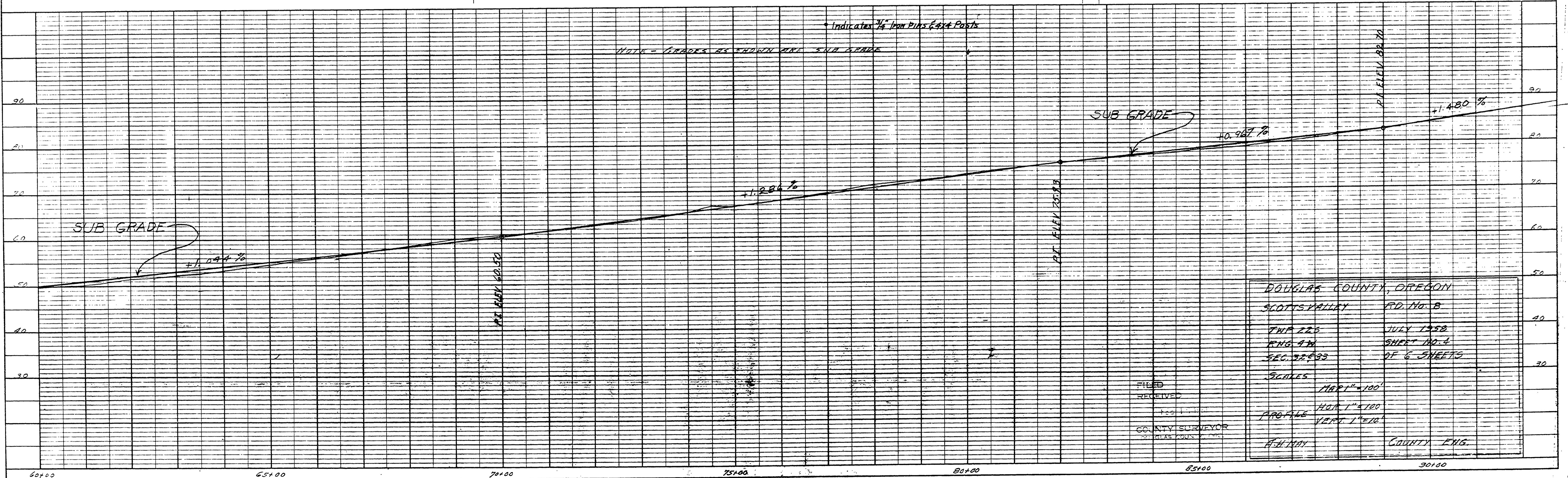
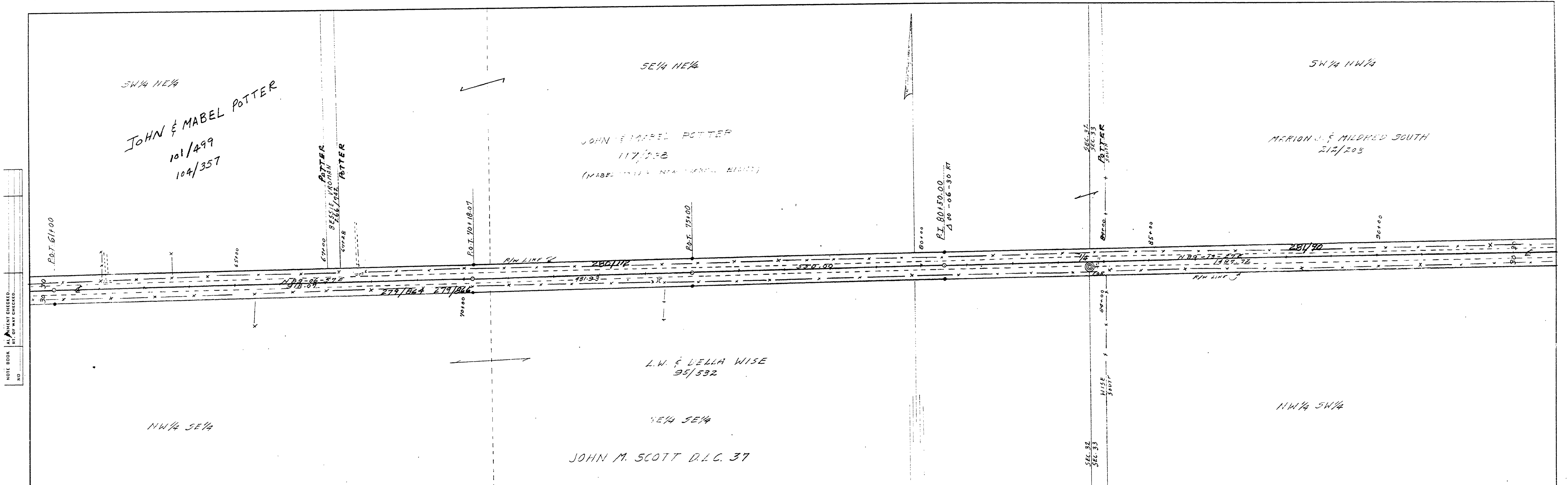
DOUGLAS COUNTY, OREGON
SCOTT'S VALLEY RD. NO. 8
TWP. 22S JULY 1958
R. 4W SHEET NO. 2
SEC. 31 & 32 OF 6 SHEETS
SCALES
H.P. 1" = 100'
V.P. 1" = 10'
A. H. MAY COUNTY ENG.

PLATE 1 - PLAN-PROFILE O.P.R. & R.E. STANDARD
100% MAG. PAPER - MADE AND PRINTED IN U.S.A.
EUGENE DIEZGEN CO.

M.P. 0.36-0.93

RD # 8 Sheet # 2 of 6 sheets

00360093



DOUGLAS COUNTY, OREGON
SCOTTSMITH RD. NO. B
TWP 22S JULY 1958
RNG 4W SHEET NO. 4
SEC. 22, 33 OF 6 SHEETS

SCALES
PLAN 1" = 100'
PROFILE 1" = 100'
VERT. 1" = 10'

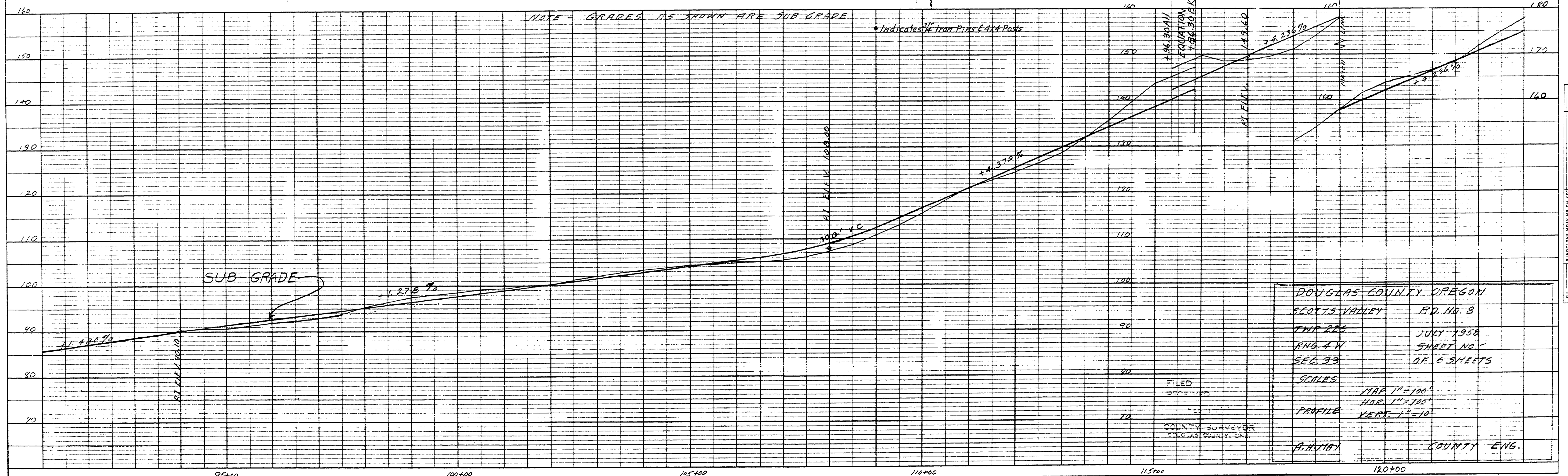
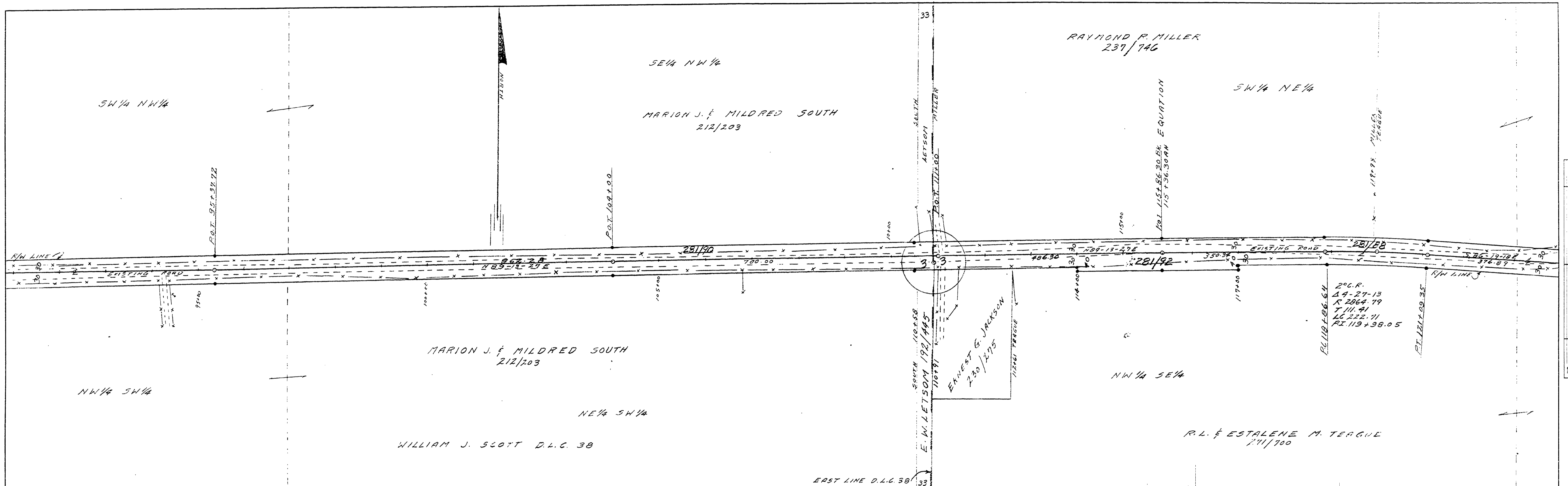
FILED RECEIVED
COUNTY SURVEYOR
H.H. HAY COUNTY ENG.

PLATE 1-PLAN-PROFILE "D.P.S. & R.E. STANDARD"
100% RAG PAPER-MADE AND PRINTED IN U.S.A.
EUGENE-DIETZGEN CO.

M.P. 1.56-2.13

JULY 1958
Rd # B sheet # 4 of 6 sheets

01560213



DOUGLAS COUNTY OREGON
 SCOTTS VALLEY RD. NO. 8
 TWP 22S JULY 1958
 RNG. 4W SHEET NO. 1
 SEC. 33 OF 6 SHEETS
 SCALES: MAP 1"=100'
 HOR. 1"=100'
 VERT. 1"=10'
 A.H. MAY COUNTY ENG.

