

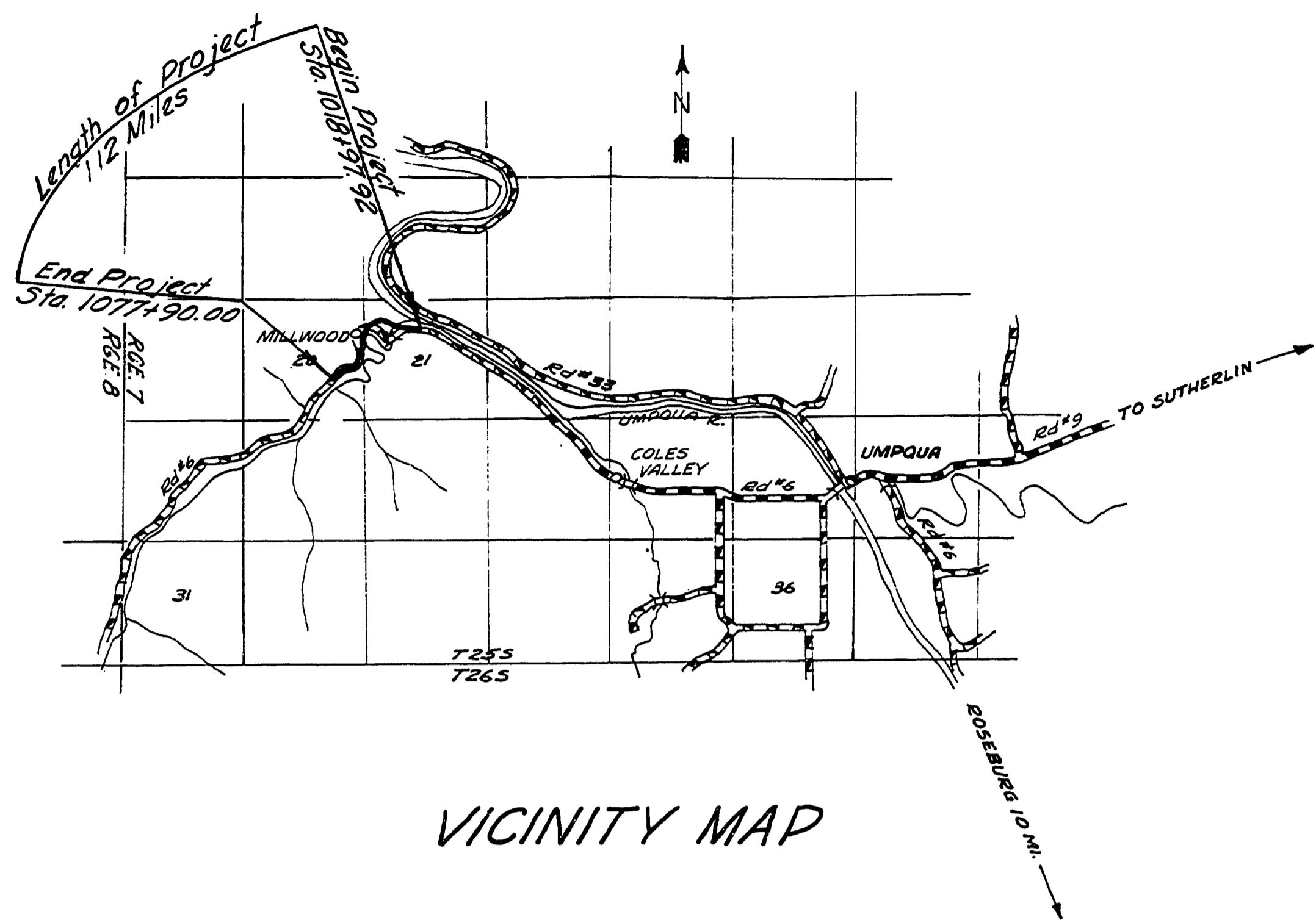
DOUGLAS COUNTY OREGON

AS CONSTRUCTED

GRADING & SURFACING

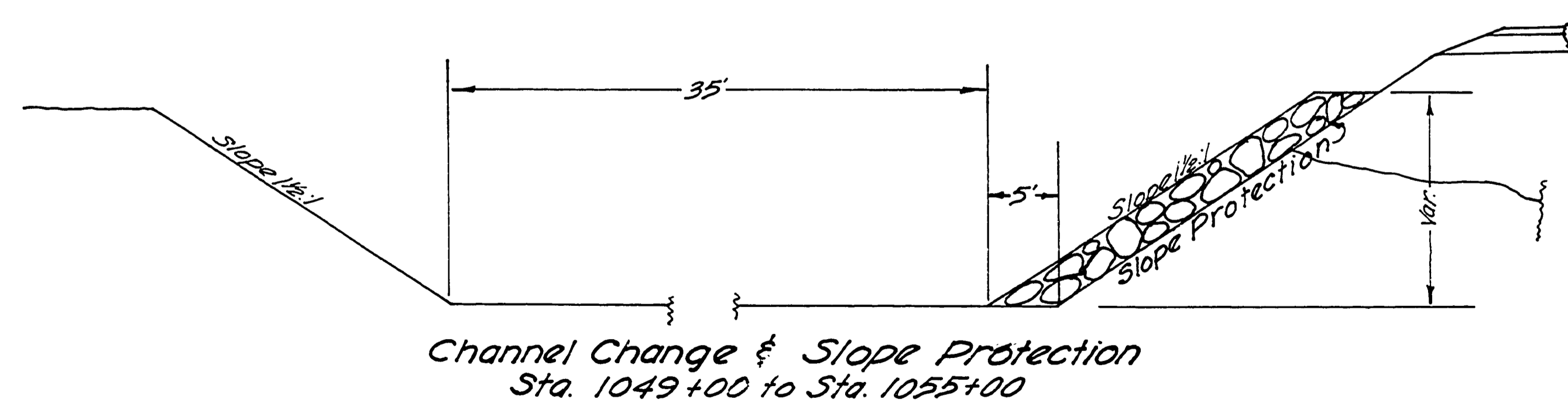
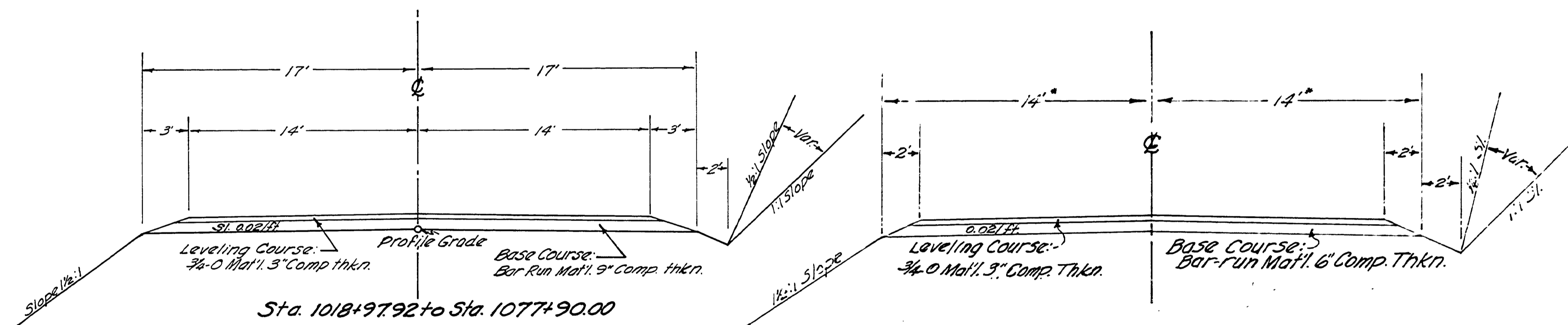
HUBBARD CREEK ROAD

COUNTY ROAD #6



VICINITY MAP

TYPICAL SECTIONS



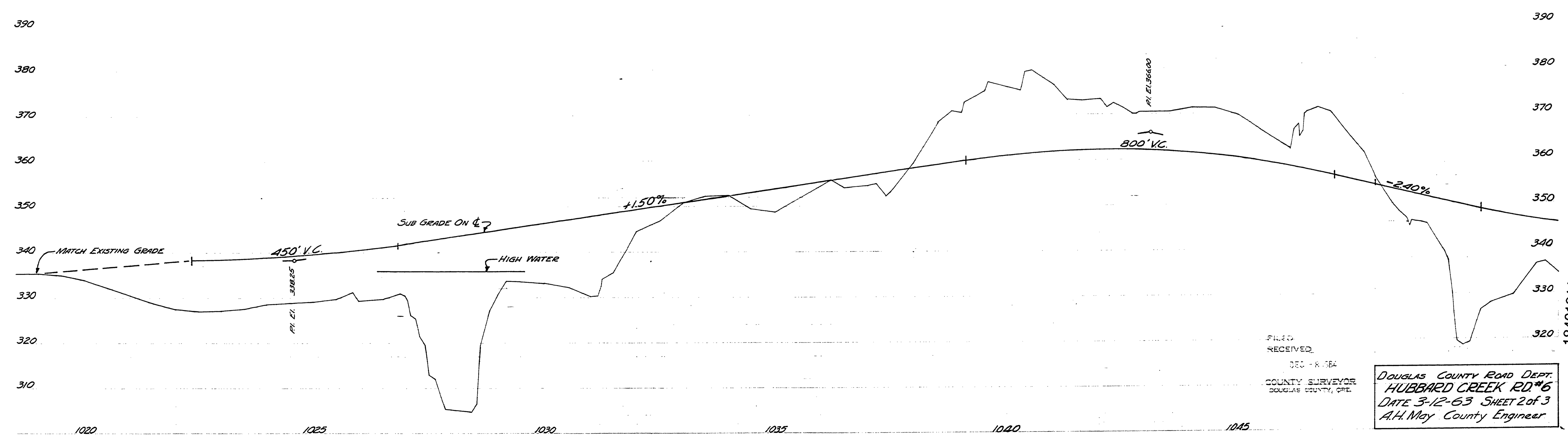
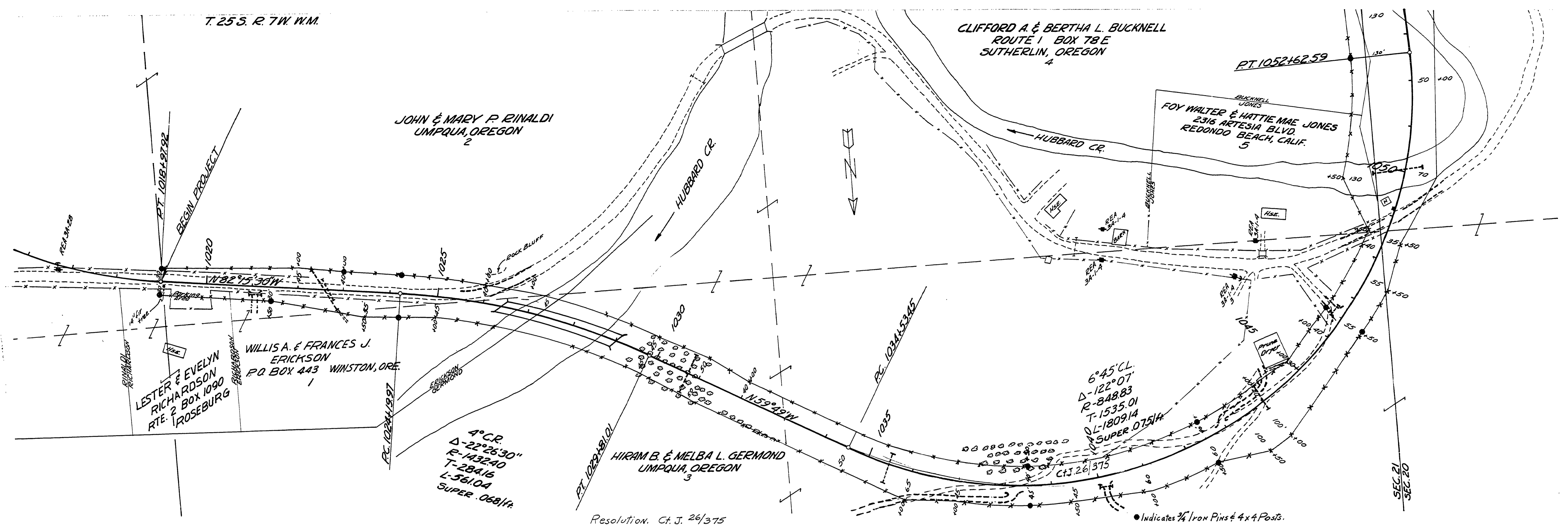
Adopted by Resolution of
the County Court this 18th
day of April 1963

V. T. Jackson
JUDGE
E. Putney
COMMISSIONER
Raul Doern
COMMISSIONER

Approved *A. H. May* Date 4/10/63
County Engineer



FILED
RECORDED
DEC 11 1963
COUNTY SURVEYOR
DOUGLAS COUNTY, OREGON



FILED
RECEIVED
DEC - 8 - 63
COUNTY SURVEYOR
DOUGLAS COUNTY, ORE.

DOUGLAS COUNTY ROAD DEPT.
HUBBARD CREEK RD #6
DATE 3-12-63 SHEET 2 of 3
A.H. May County Engineer

