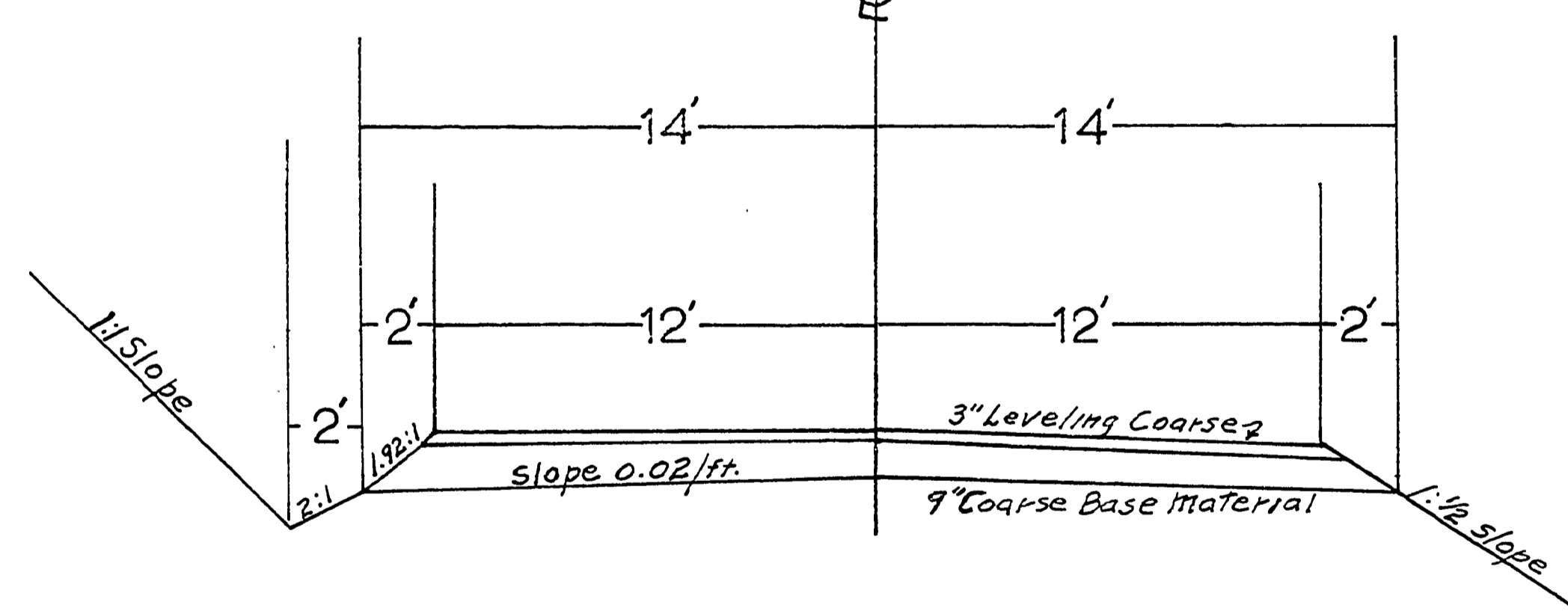


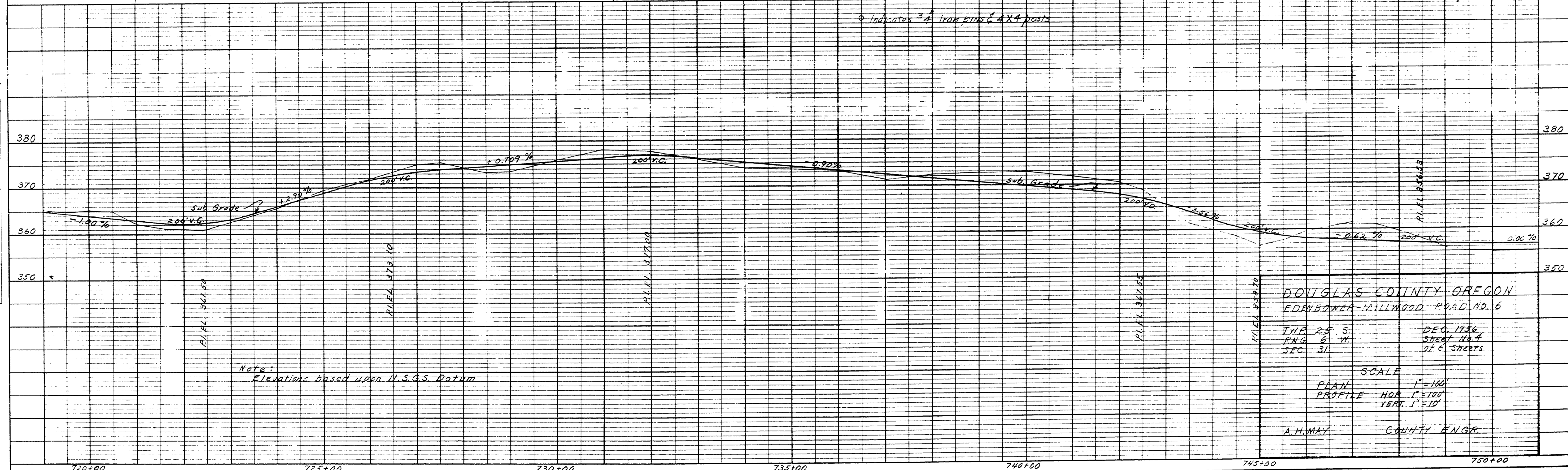
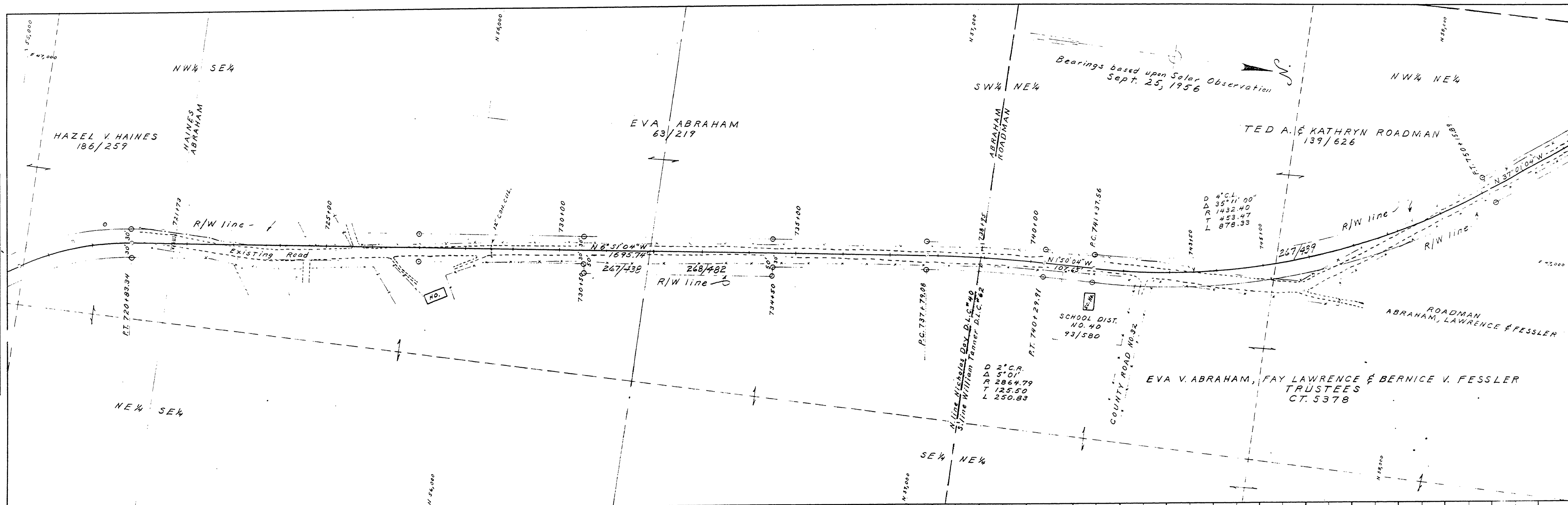
DOUGLAS COUNTY OREGON
 PLANS FOR PROPOSED PROJECT
 GRADING
 EDENBOWER-MILLWOOD ROAD
 COUNTY ROAD NO. 6
 DEC. 1956



TYPICAL SECTION



1169141C



REVISIONS
 1. ALLEN, LUTHE, & CO. ENGINEERS
 2. REVISIONS
 3. REVISIONS
 4. REVISIONS
 5. REVISIONS
 6. REVISIONS
 7. REVISIONS
 8. REVISIONS
 9. REVISIONS
 10. REVISIONS

NOTE BOOK
 GRADES CHECKED
 BY M. M. NOTO
 SINDLING ARCHITECTS CIVIL
 NO.

DOUGLAS COUNTY OREGON
 EDENBOWER-MILLMOOD ROAD NO. 6
 TWP. 25 S.
 R. 6 W.
 SEC. 31
 DEC. 1956
 SHEET NO. 4
 OF 6 SHEETS

SCALE
 PLAN 1"=100'
 PROFILE HOR. 1"=100'
 VERT. 1"=10'

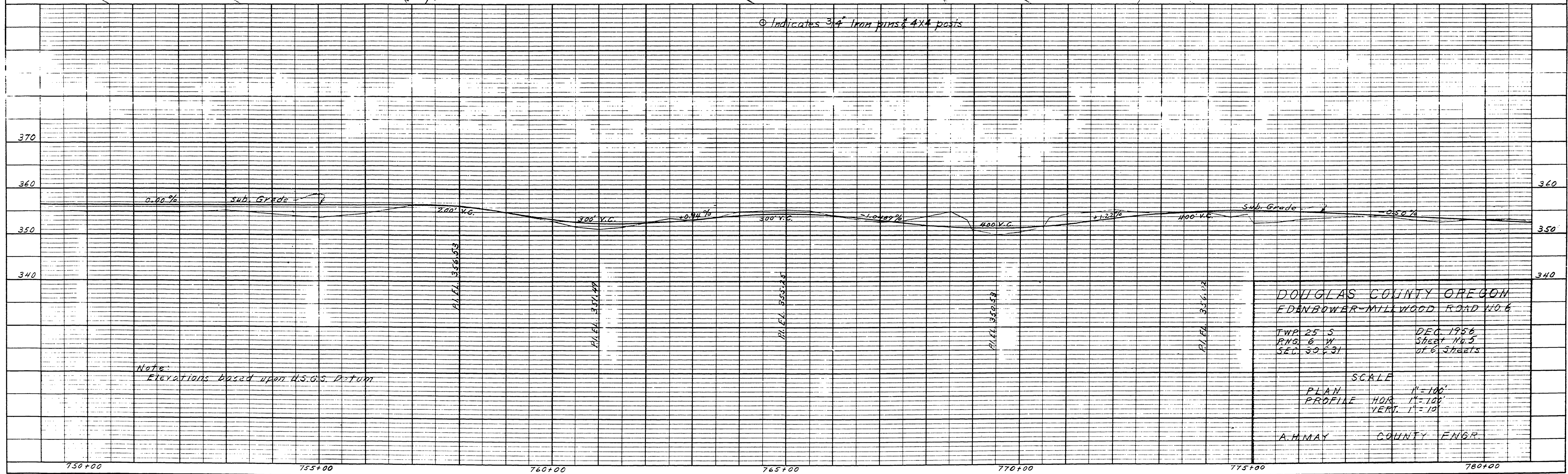
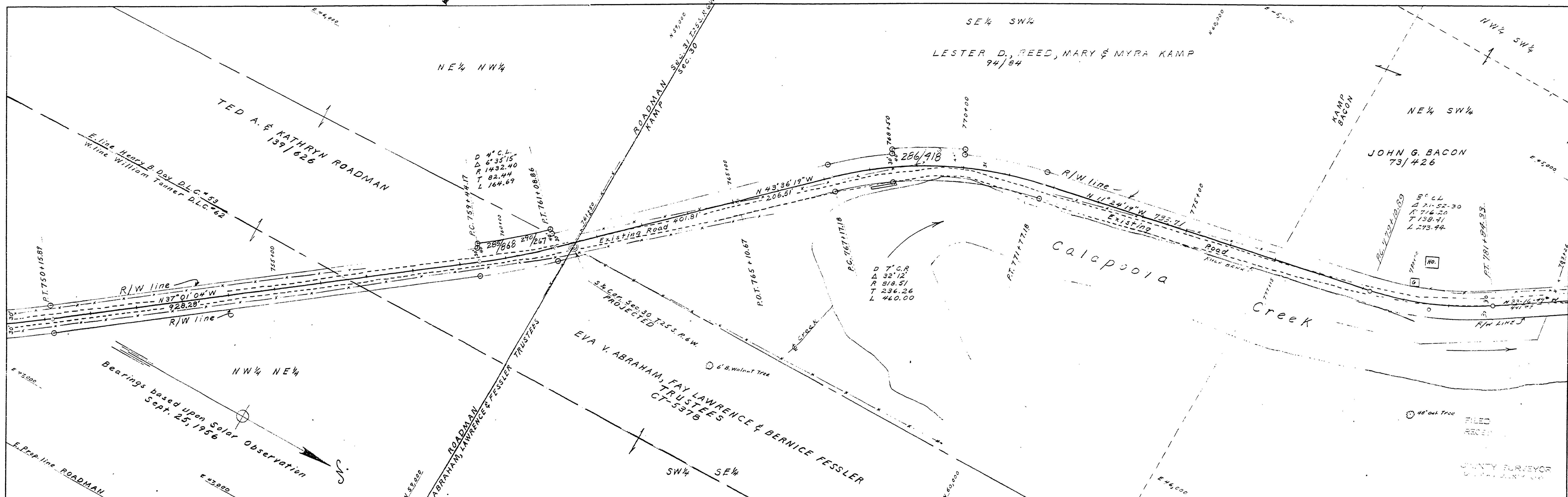
A. H. MAY COUNTY ENGR.

PLATE 1-PLAN-PROFILE O.P.R. & R.E. STANDARD
 100% RAG PAPER MADE AND PRINTED IN U. S. A.
 EUGENE DIEZGEN CO.

M.P. 12.87-13.44

Dec. 356
 Rd. #6 Sheet #4 of 6 sheets

12871344



DOUGLAS COUNTY OREGON
 EDENBOWER-MILLWOOD ROAD NO. 6
 TWP. 25 S. R. 6 W. SEC. 30 & 31
 DEC. 1956
 SHEET No. 5
 of 6 sheets
 SCALE
 PLAN 1"=100'
 PROFILE HOR. 1"=100'
 VERT. 1"=10'
 A. H. MAY COUNTY ENGR.

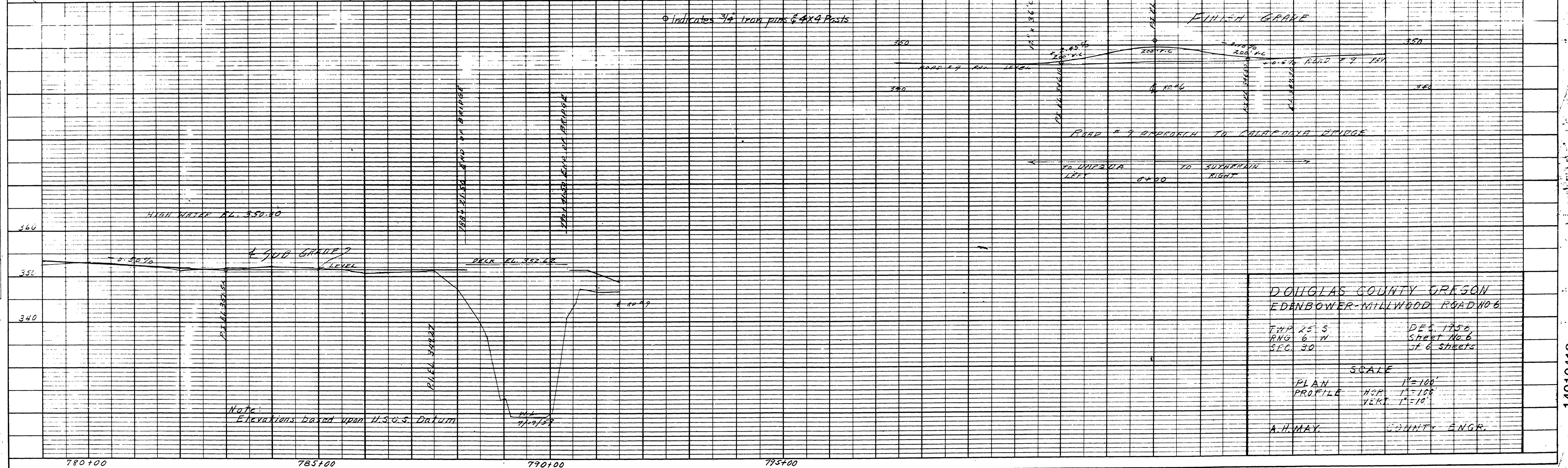
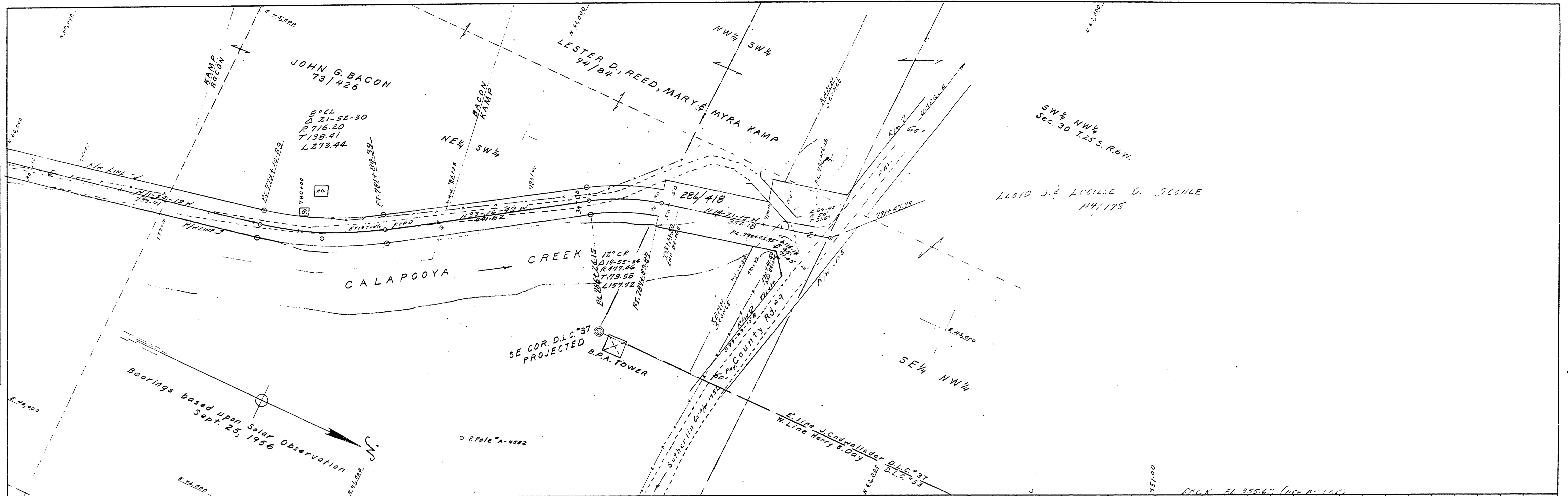
Note: Elevations based upon N.S.G.S. Datum

PLATE 1-PLAN-PROFILE "D.P.R. & R.E. STANDARD"
 100' RAD. PAPER MADE AND PRINTED IN U.S.A.
 EUGENE DIEZGEN CO.

M.P. 13.44 - 14.01

DEC 956
 rd #6 sheet #5 of 6 sheets

13441401



DOUGLAS COUNTY OREGON
 EDENBOWER-MILLWOOD ROAD NO 6
 TWP 25 S
 R. 10 E
 SEC. 30
 DEC. 1956
 Sheet No. 6
 of 6 sheets
 SCALE
 PLAN 1"=100'
 PROFILE 1"=10'
 VERT. 1"=10'
 A.H. MAY COUNTY ENGR.

14010419