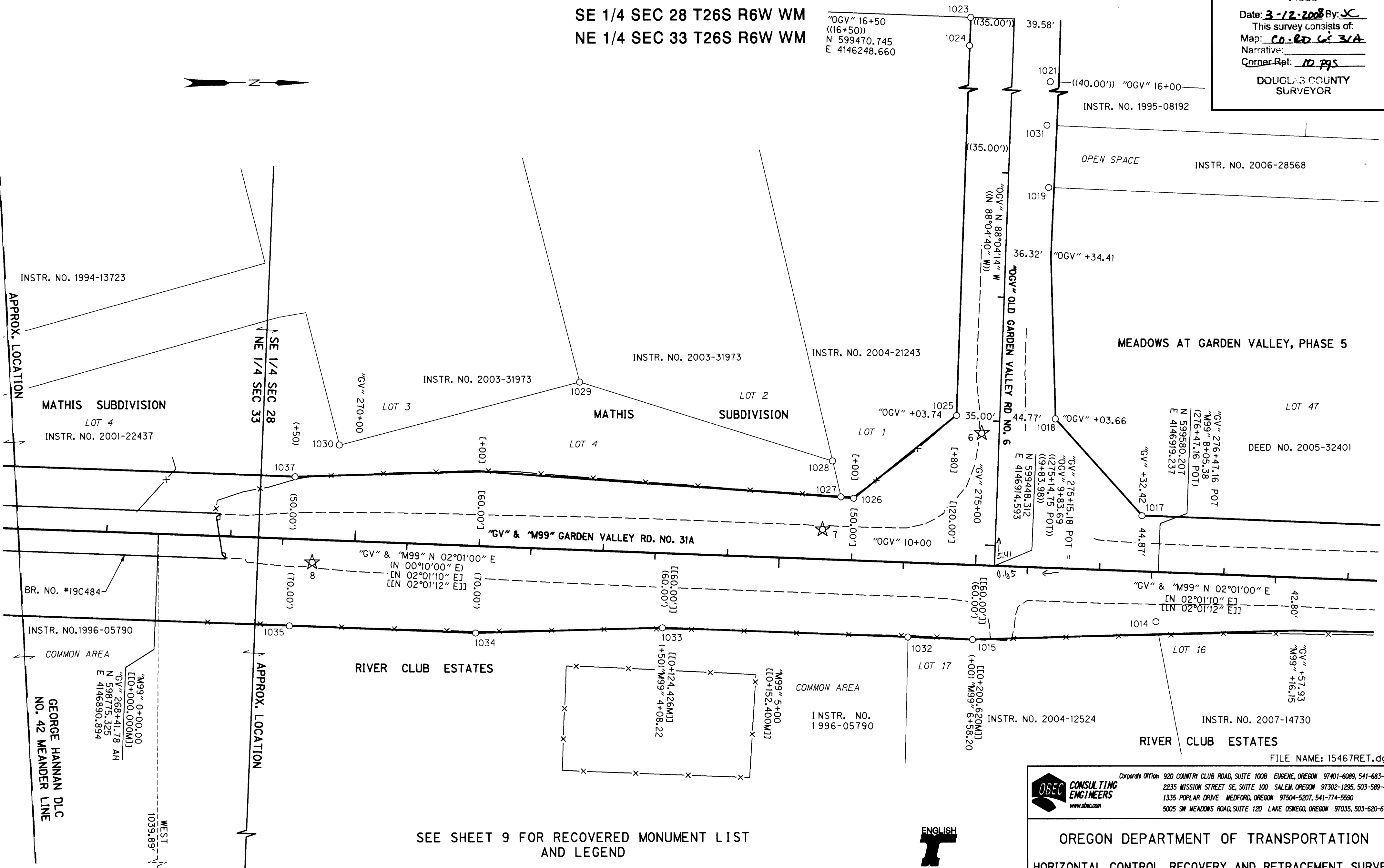
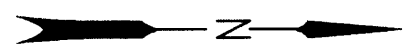


FILED

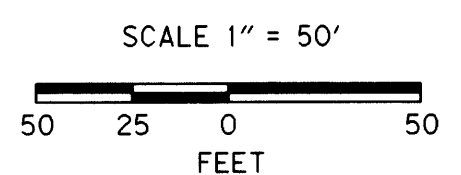
Date: 3-12-2008 By: JC
This survey consists of:
Map: CO RD 6 & 31A
Narrative:
Corner Rpt: 10 PGS

DOUGLAS COUNTY
SURVEYOR

SE 1/4 SEC 28 T26S R6W WM
NE 1/4 SEC 33 T26S R6W WM



SEE SHEET 9 FOR RECOVERED MONUMENT LIST
AND LEGEND



ENGLISH
**REGISTERED
PROFESSIONAL
LAND SURVEYOR**
Logan Miles
LOGAN MILES
65452
RENEWAL DATE: DEC. 31, 2008

OBE CONSULTING ENGINEERS
Corporate Office: 920 COUNTRY CLUB ROAD, SUITE 100B EUGENE, OREGON 97401-6089, 541-683-6090
2235 MISSION STREET SE, SUITE 100 SALEM, OREGON 97302-1295, 503-589-4100
1335 POPLAR DRIVE MEDFORD, OREGON 97504-5207, 541-774-5590
5005 SW MEADOWS ROAD, SUITE 120 LAKE OSWEGO, OREGON 97035, 503-620-6103
www.obec.com

OREGON DEPARTMENT OF TRANSPORTATION
HORIZONTAL CONTROL, RECOVERY AND RETRACEMENT SURVEY
NORTH UMPQUA RIVER BROWNS BRIDGE
GARDEN VALLEY RD.
DOUGLAS COUNTY
ODOT REGION 3
3500 NW STEWART PARKWAY
ROSEBURG, OR. 97470
KEY # 15467
JANUARY, 2008
SCALE 1" = 50'
SHEET 8 OF 10
DESIGNED: LOGAN MILES
DRAWN: DAVID JOHN
CHK'D: ANDY AUSLAND
PROJ. NO. 0019-0084.18

06RD0505