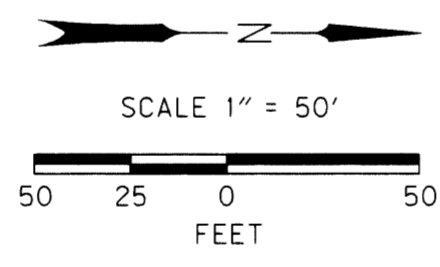
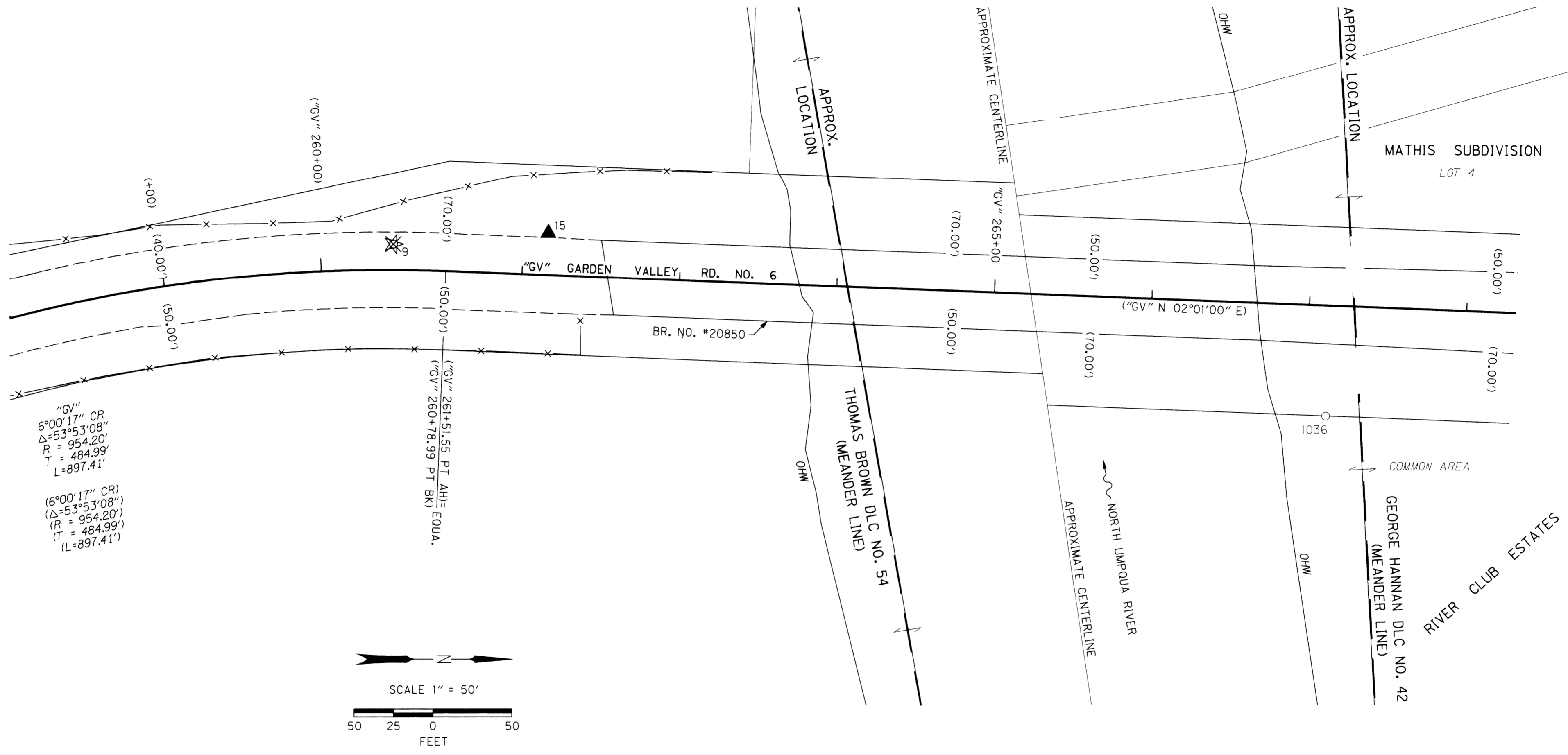


NE 1/4 SEC 33 T26S R6W WM

FILED
 Date: 6-2-2011 By: JC
 From: This survey consists of:
 Map: MP 4.89-5.08
 Narrative: _____
 Corner R.L.: 5 Sheets
 DOUGLAS COUNTY
 SURVEYOR



SEE SHEET 1 FOR LEGEND

REGISTERED
 PROFESSIONAL
 LAND SURVEYOR

OREGON
 JULY 12, 2005
 LOGAN MILES
 65452
 RENEWAL: DEC. 31, 2012

FILE NAME: 15467re-mon.dgn
 Corporate Office: 920 COUNTRY CLUB ROAD, SUITE 100B EUGENE, OREGON 97401-6089, 541-683-6090
 2235 MISSION STREET SE, SUITE 100 SALEM, OREGON 97302-1295, 503-589-4100
 831 O' HARE PARKWAY MEDFORD, OREGON 97504-4005, 541-774-5590
 5005 SW MEADOWS ROAD, SUITE 120 LAKE OSWEGO, OREGON 97035, 503-620-6103

OREGON DEPARTMENT OF TRANSPORTATION
 RIGHT OF WAY BOUNDARY RE-MONUMENTATION SURVEY
 NORTH UMPQUA RIVER BROWNS BRIDGE
 GARDEN VALLEY RD.
 DOUGLAS COUNTY

ODOT REGION 3
 3500 NW STEWART PARKWAY
 ROSEBURG, OR. 97470 KEY # 15467

MAY, 2011
 SCALE 1" = 50'
 SHEET 4 OF 5

RECOVERED MONUMENT LIST

| PT. NO. | LDP NORTHING | LDP EASTING | STATION | OFFSET | DATE | DESCRIPTION & REFERENCE DOCUMENTS |
|---------|--------------|-------------|----------------|-----------|----------|---------------------------------------------------------------------------------------------------|
| 1036 | 598643.95 | 4146956.43 | "GV" 267+12.79 | 70.11' RT | 01/11/08 | FD 5/8" IRON ROD W/ YPC STAMPED "I.E. ENGR.", UP 0.2', GOOD CONDITION, PLAT OF RIVER CLUB ESTATES |

FD = FOUND
 YPC = YELLOW PLASTIC CAP
 OHW = ORDINARY HIGH WATER

DESIGNED: LOGAN MILES
 DRAWN: LOGAN MILES
 CHK'D: ARON CUTSFORTH
 PROJ. NO. 0019-0084.68

Co. Rd. #6 MP 4.89-5.08

04890508