

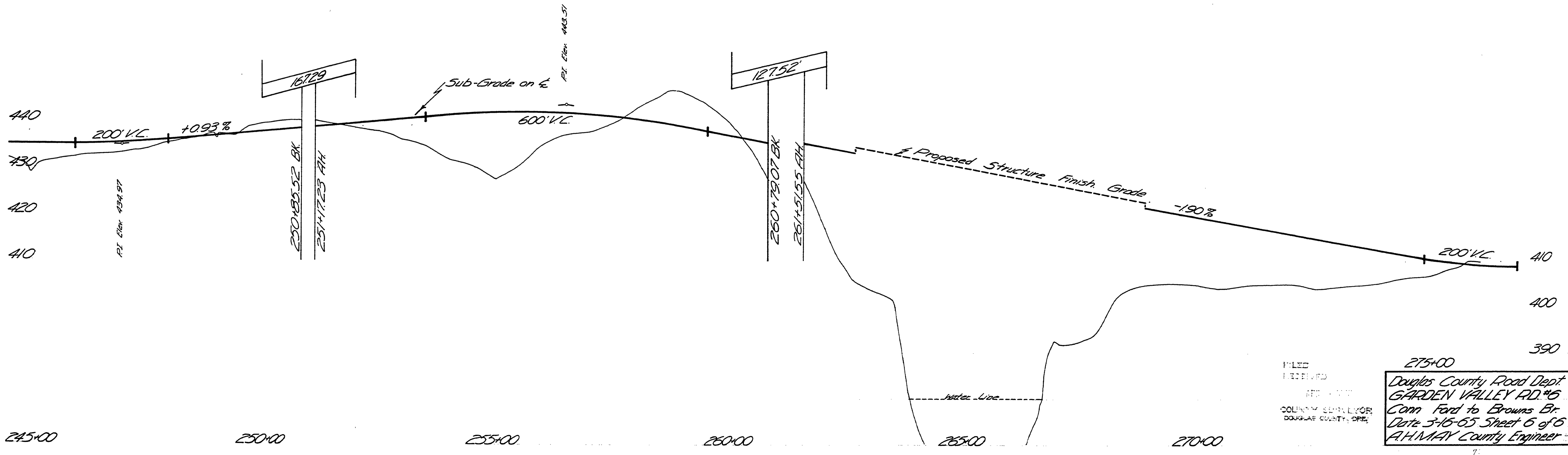
T265 R6W W1M



2°15'CL
 Δ-35°07'00"
 R-2546.48
 T-805.75
 L-1560.74

6°CR
 Δ-53°51'00"
 R-954.93
 T-484.99
 L-897.50

● Indicates 3/4" Iron Pins & 4x4 Posts.



FILED
 RECEIVED
 COUNTY ENGINEER
 DOUGLAS COUNTY, ORE.

275+00
 Douglas County Road Dept
 GARDEN VALLEY RD #6
 Conn Ford to Browns Br
 Date 3-16-65 Sheet 6 of 6
 A.H. MAY County Engineer

04880525

M.P. 4.88 - 5.25

Rd # 6 3-16-65 65